

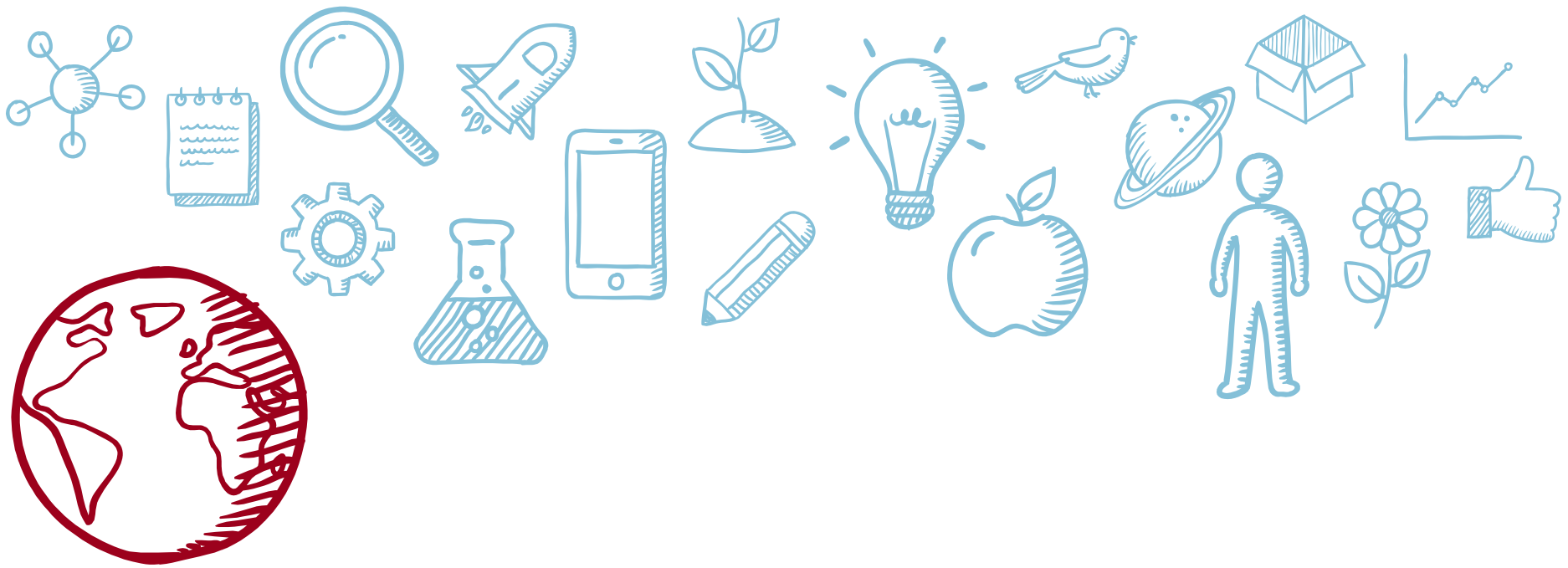


‘Connect with Science’:

strengthening and supporting communities
through Science Literacy and Science in Makerspaces



Valentina De Col
Programme & Research Officer



Planetary Health

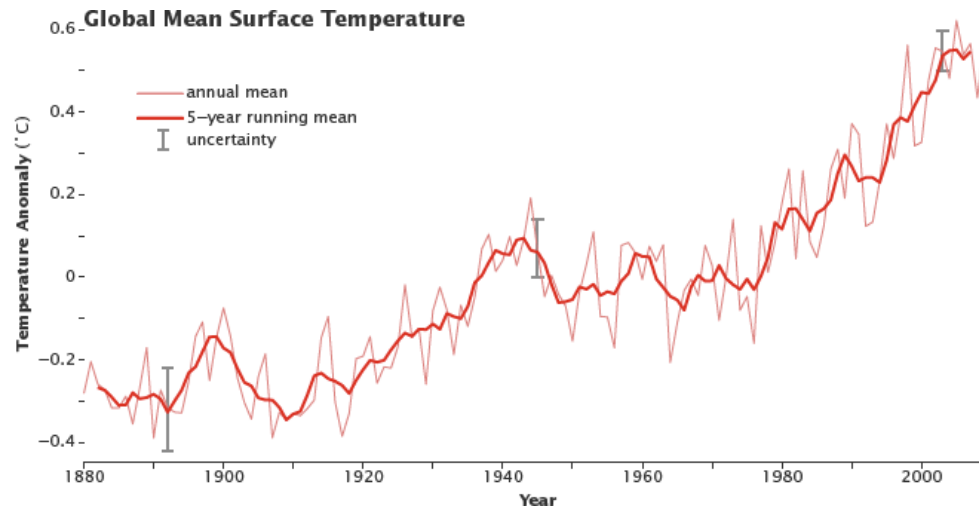
The health of human civilization and
the state of the natural systems on which it depends

The Rockefeller Foundation - Lancet Commission on Planetary Health, 2015

Planetary health depends on informed citizens



Understanding issues: global warming



Source: nasa.gov

Fossil fuels



Deforestation



Agriculture





Understanding issues: loss of biodiversity

Climate change



Deforestation and habitat loss



Invasive species



Pollution



Overexploitation





Understanding issues: implications of genetic research

Humans



Animals



Plants





Understanding issues: maternal health



**Every day
~ 830 women die
from preventable causes related to
pregnancy and childbirth**

99% in developing countries

**Higher in women living in rural areas
and among poorer communities**



Understanding issues: there are many others...

agronomy, astronomy,
epidemiology, marine
ecology, medicine, water
quality and more...



Essential for personal, community and global involvement





**Network for Information
and Digital Access**

NGO based in Oxford (UK)

**Over 8,500 network members
across 76 countries**

MISSION

**Promote and stimulate access and
effective utilisation of information
and knowledge**

MAIN FOCUS

**Public access to information and services
which provide it**



Network for Information and Digital Access

Since inception, NIDA works through collaboration, in response to request, supporting, strengthening and advising information and knowledge activities, including:

- research
- local content
- impact assessment

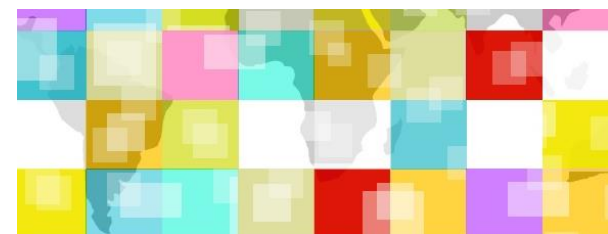
Specialist fields of information policies and sector assessment added in 2007



nida-net.org

2014-2015

Requests in the field of science & technology led to the programme ‘**Connect with Science**’; one of the first activities of which was a *Landscape Survey of Science Literacy in Developing Countries*



Science Literacy in Developing Countries
Landscape Survey

Summary Report

Authors:
Rob Davies and Carol Priestley



Hardie Wren
Development Initiatives

Network for Information
and Digital Access





nida-net.org

‘Connect with Science’

includes two main strands
at the moment



Science Literacy

Science in Makerspaces



‘Connect with Science’ Science Literacy



Science literacy relates to the ability to:

- read and write
- think scientifically
- use scientific knowledge and processes to both understand the world around us and to participate in decisions that affect it



nida-net.org

Science Literacy could have increased beneficial impact globally, and especially in developing countries:

- food security
- food safety
- disease prevention
- maternal health
- water management
- safety and sanitation in urban environments
- agriculture and rural development
- diet and nutrition

and more...



‘Connect with Science’

Better understanding
leads people to
respond better to the
challenges around them





‘Connect with Science’ Science in Makerspaces

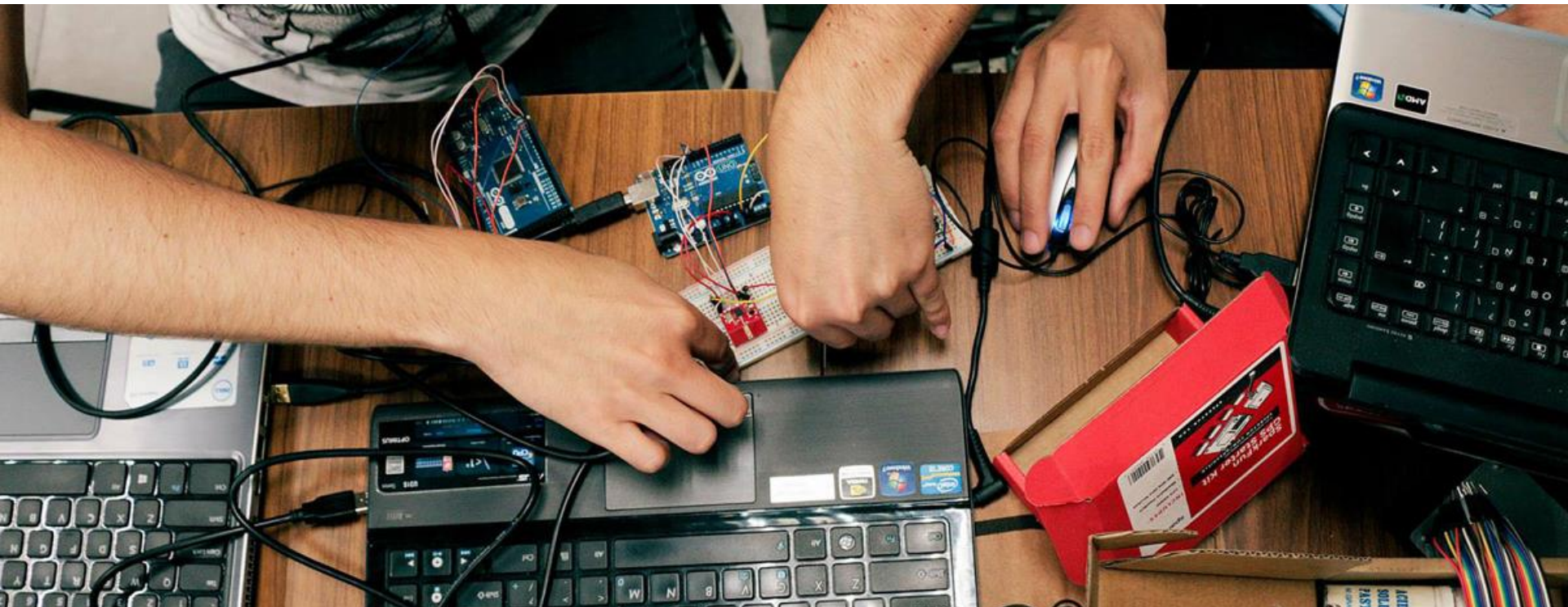
Community-operated work spaces where people with common interests can meet, socialize, innovate and collaborate





‘Connect with Science’ Science in Makerspaces

Hands-on experimentation and innovation in local public spaces can contribute to the sharing of innovative experiences and developing skills in the application of scientific and technologic understanding

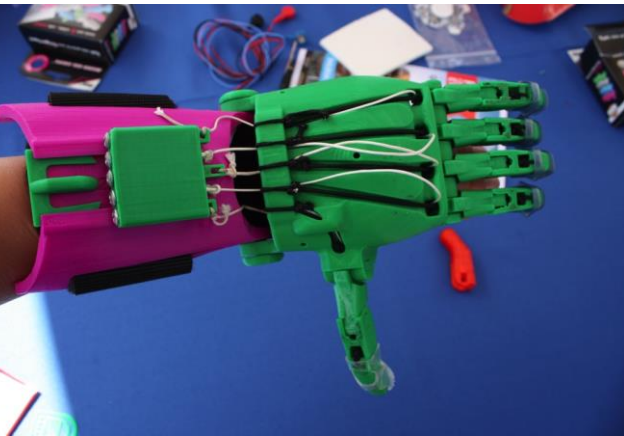




‘Connect with Science’

Combining Science Literacy with exploration in Makerspaces

Prosthetics



Robotics



Drone for
vaccine
delivery



Mud battery





nida-net.org

‘Connect with Science’ receives recommendations and collects examples of recent or ongoing **practical activities** that have the **potential to be adapted** to a range of **different cultures and contexts**

- Environmental
- Health
- Women's Education
- Agriculture
- Climate
- Science Communication & Education
- Makerspace





nida-net.org

NIDA is also able to support pilot projects e.g. the **Maternal Health literacy pilot project in Kochi, Kerala (India)**: address maternal health problems of women living in urban slum areas of Kochi

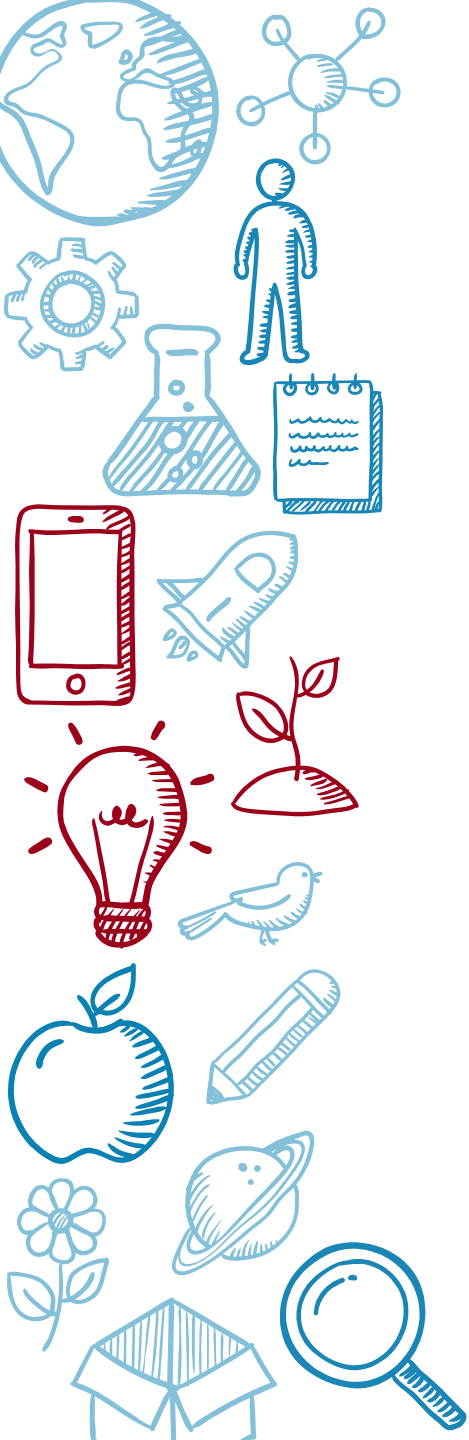




nida-net.org

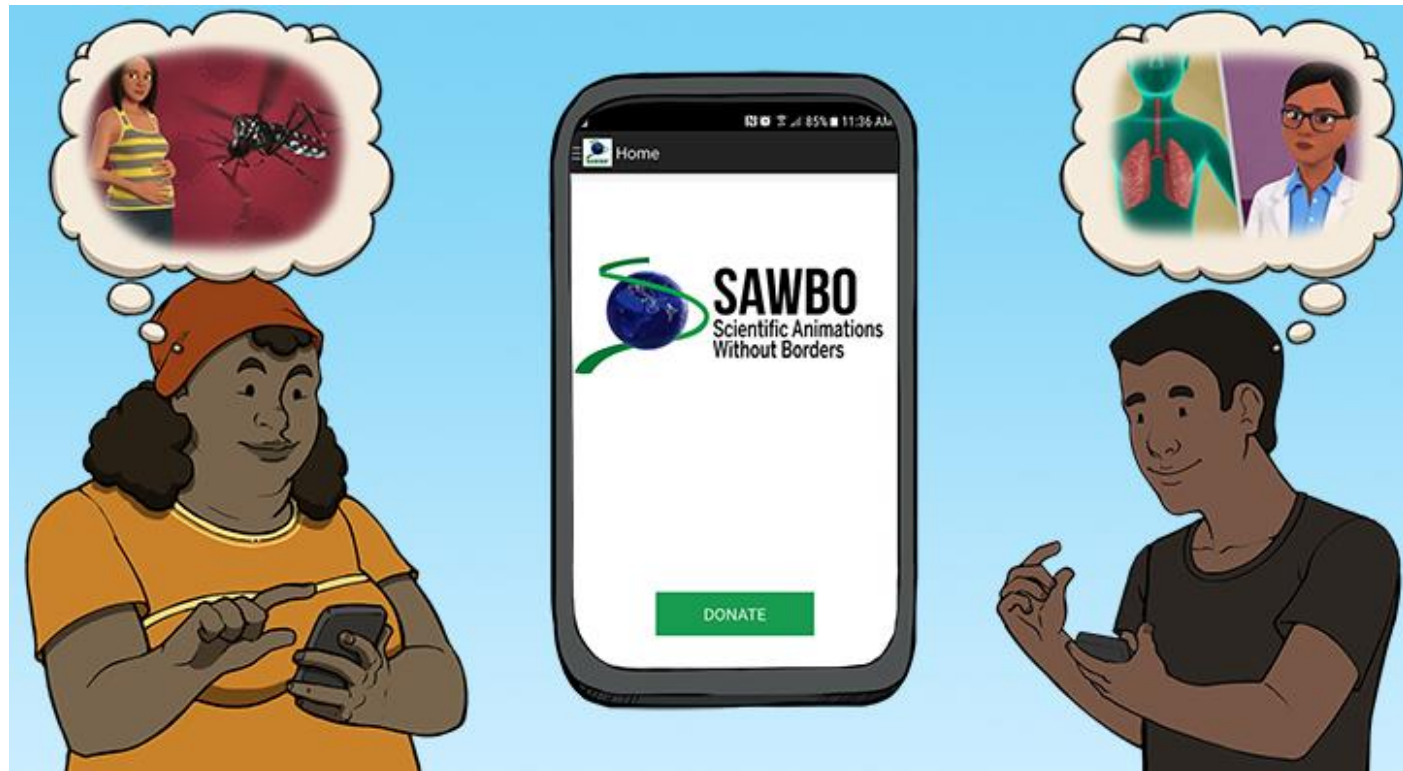
Nutrition Sensitive Literacy (NSL) pilot project (Nepal): to foster the literacy skills of children and increase knowledge of nutrition and health





nida-net.org

Scientific Animations Without Borders (SAWBO)
(USA/global): provide access to health and agricultural information to low literate learners





nida-net.org

**Namib Desert Environmental Education Trust
(NaDEET) (Namibia/national): fostering Education
for Sustainable Development (ESD) in Namibia**





nida-net.org

Cimaza (Belgium/global): informing and educating the general public about the importance of immunization, vaccine safety, science behind virus infections and diseases





nida-net.org

Bus ConCiencia (Bus "With-Science")
(Chile/national): enhancing the learning of Science and Technology, through inspiring and facilitating easily replicable scientific experiences





NIDA

nida-net.org

'La main à la pâte' Foundation (France/global):
improving the quality of science and technology
teaching in primary and secondary education

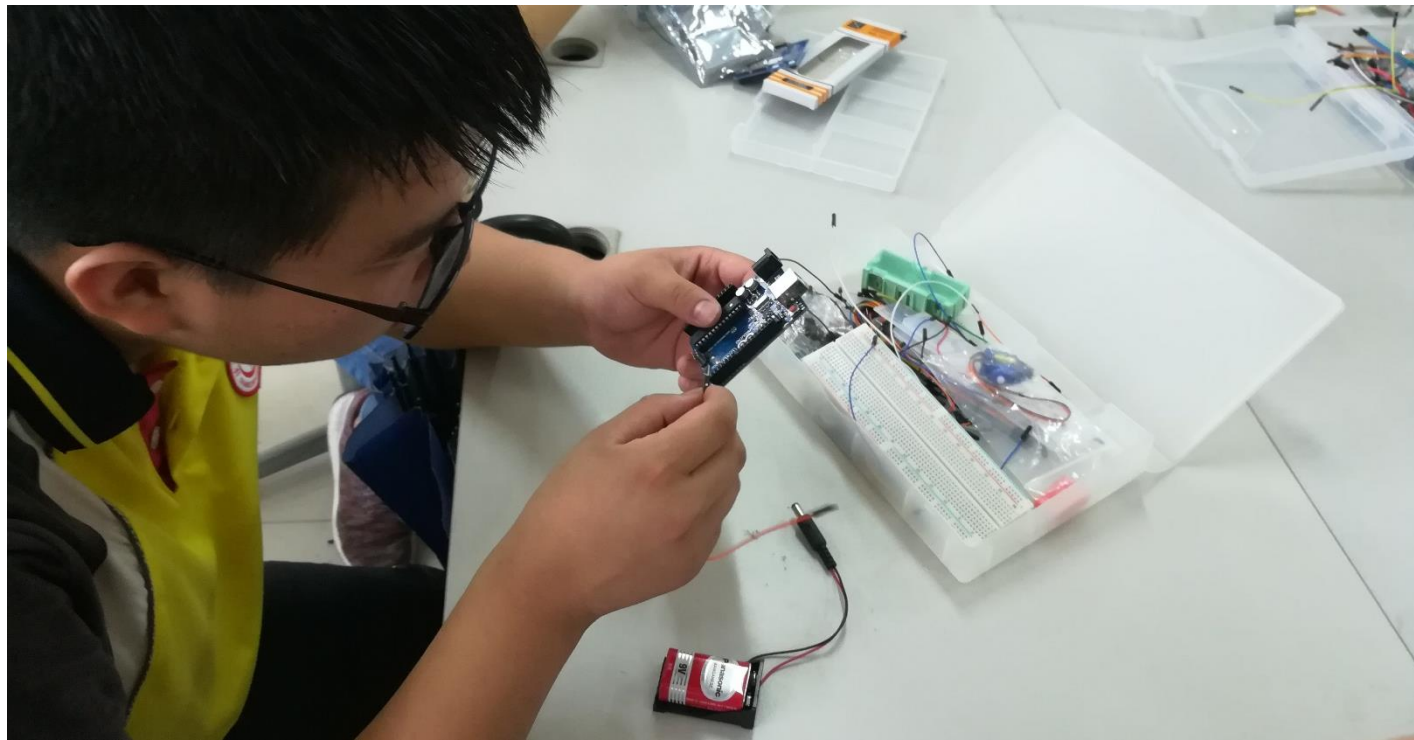


FONDATION
La main à la pâte



nida-net.org

EEF & DFRobot Kit pilot project (China):
increasing Maker experience in Arduino projects,
providing more access to Maker activity and
enabling hands-on projects





NIDA

nida-net.org

Hardwarethon (Costa Rica, Nicaragua): developing new technological ideas, projects and prototypes able to generate a culture of innovation





‘Connect with Science’

Contributing to Science Literacy





‘Connect with Science’

Contributing to sustainable development

Solar cooker



Wind turbine



Water filter



Solar
compressor



‘Connect with Science’

Protecting and conserving global resources

Atmosphere, water, land, minerals,
vegetation, crops, animal life,
biodiversity, ecosystems,...





Forthcoming research

*The impact of
Science Literacy delivery
methods - what works?*



THANKS!

Valentina De Col - valentina.decol@nida-net.org

NIDA
nida-net.org



[@nidanet.org](https://www.facebook.com/nidanet.org)



[@NIDA_net](https://twitter.com/NIDA_net)