



**The Abdus Salam
International Centre for Theoretical Physics**



2148-Presentations

**Fifth ICTP Workshop on the Theory and Use of Regional Climate
Models**

31 May - 11 June, 2010

**The effects of future landuse change for the central region of Turkey on teperature
and precipitation**

G 12



GROUP 12

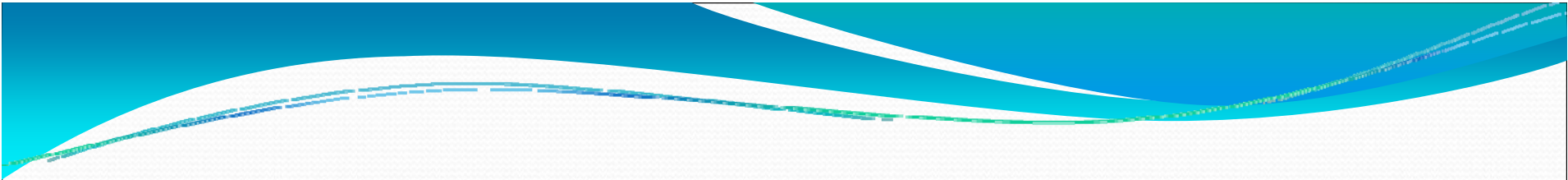
THE EFFECTS OF FUTURE LANDUSE CHANGE FOR THE CENTRAL REGION OF TURKEY ON TEMPERATURE AND PRECIPITATION

TUGBA OZTURK, LEVENT KURNAZ, JEAN PIERRE



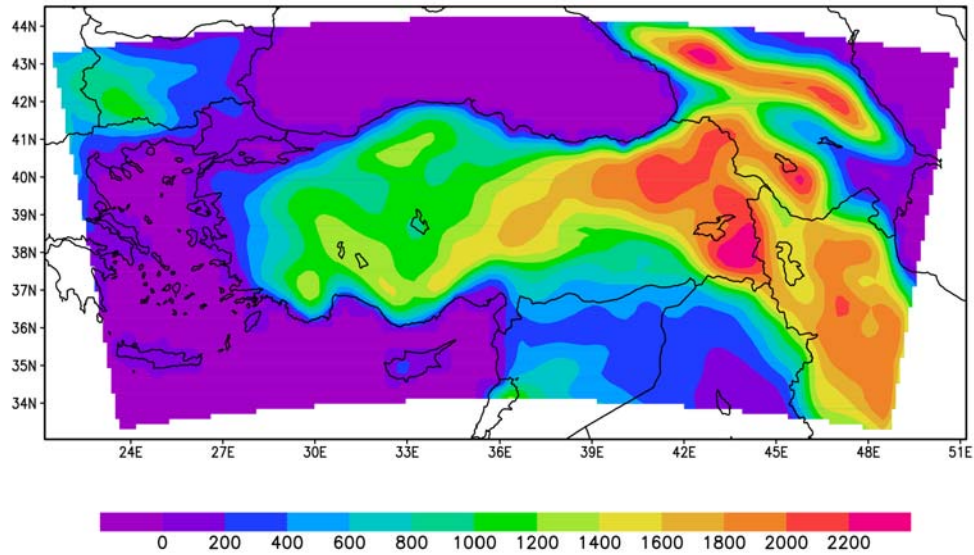
- Parameters:

- clat=39.00N
- clon=36.00E
- iy=40
- jx=80
- ds=30 km
- iproj=LAMCON
- ssttyp=OI_WK for present run, EHA1B for future run
- dattyp=EIN15 for present run, EH5OM for future run.

- 
- 1990 Summer control run
 - 2070 Summer future run
 - Grell Cumulus convection scheme
 - Fritsch & Chappell (1980)-Grell Scheme Cumulus closure scheme.

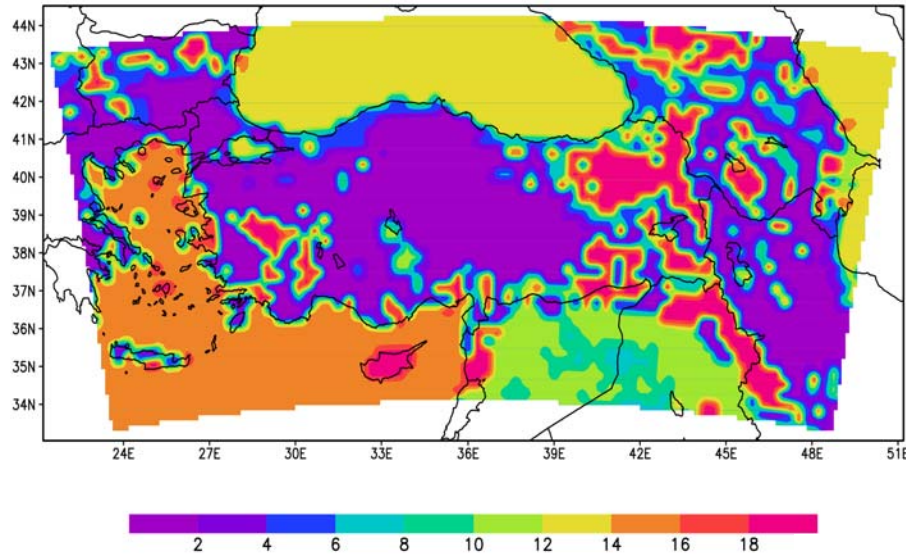
TOPOLOGY OF TURKEY

TOPOLOGY

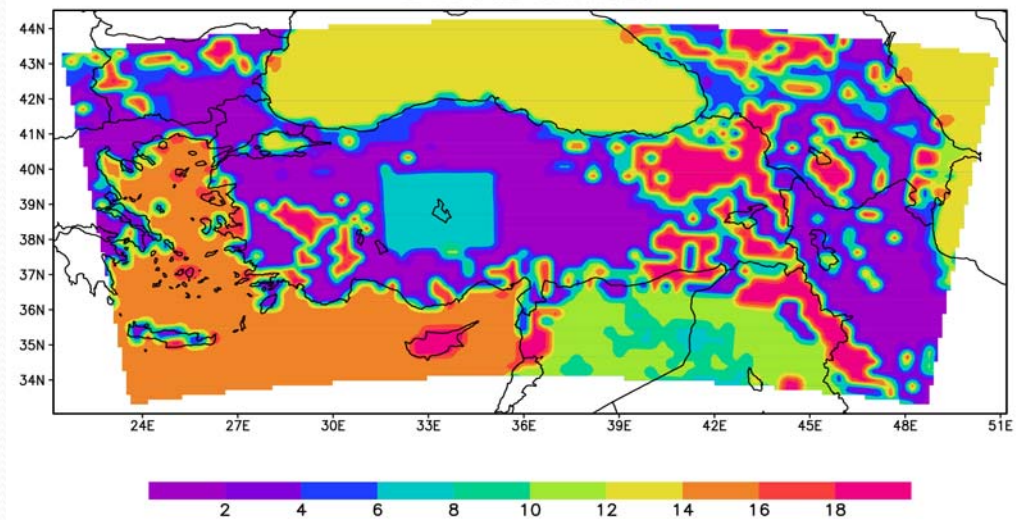


PROJECTED LANDUSE CHANGE

LANDUSE

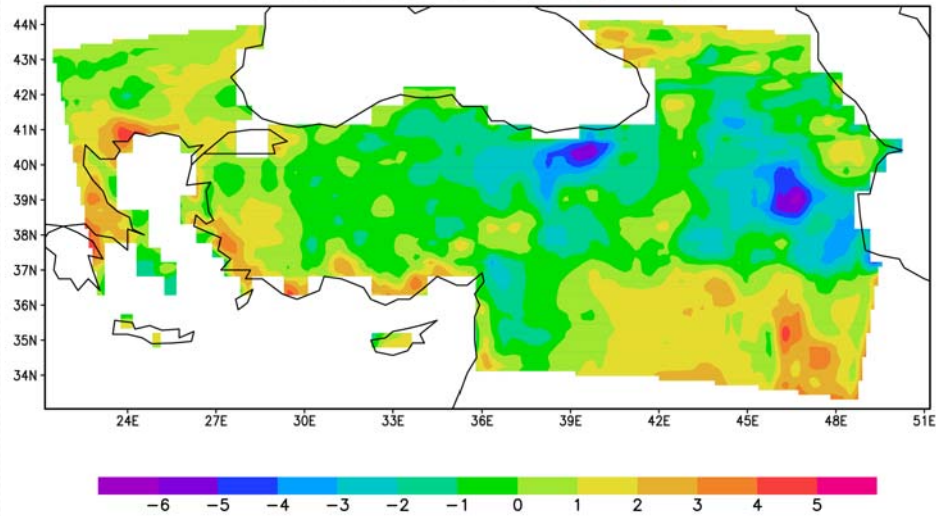


LANDUSE CHANGED

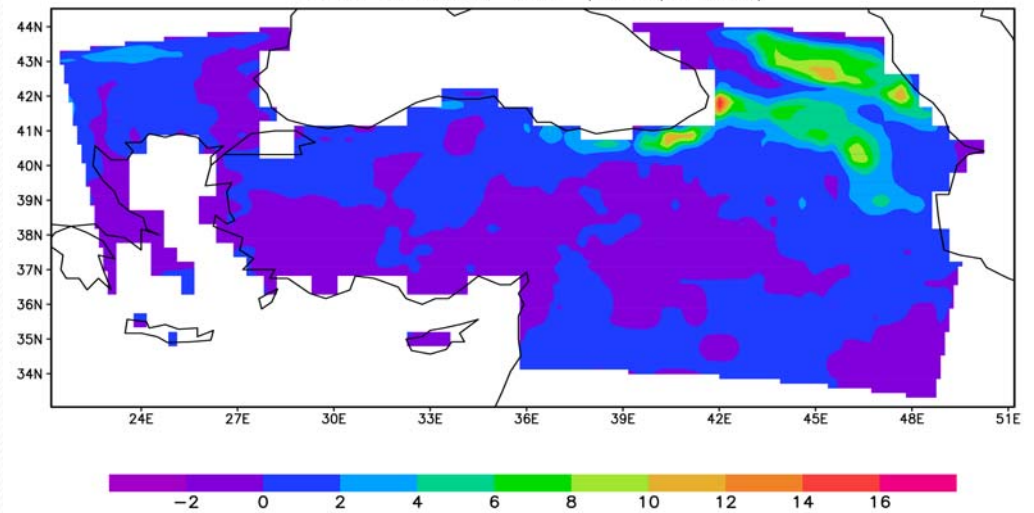


1990-CRU COMPARISON

TEMPERATURE 1990-SUMMER - CRU

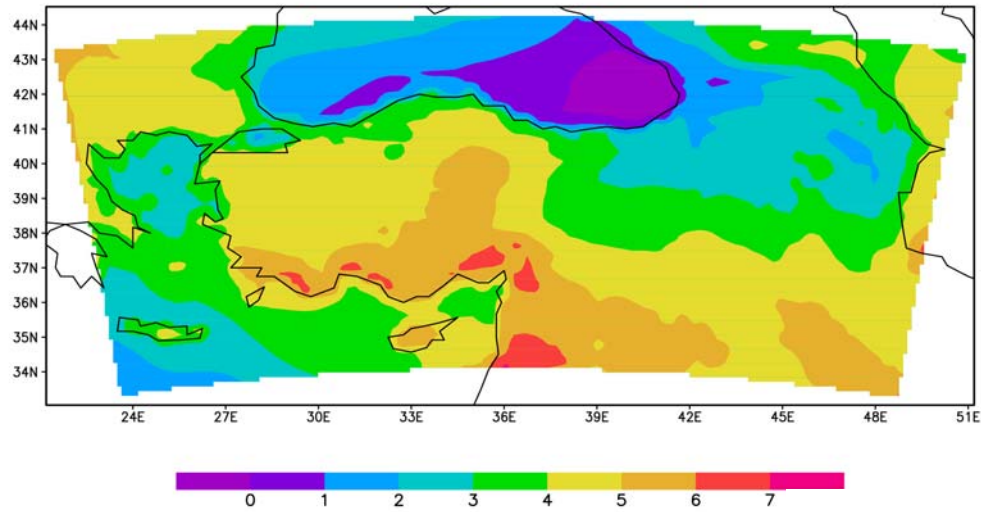


1990 SUMMER-CRU (Precipitation)

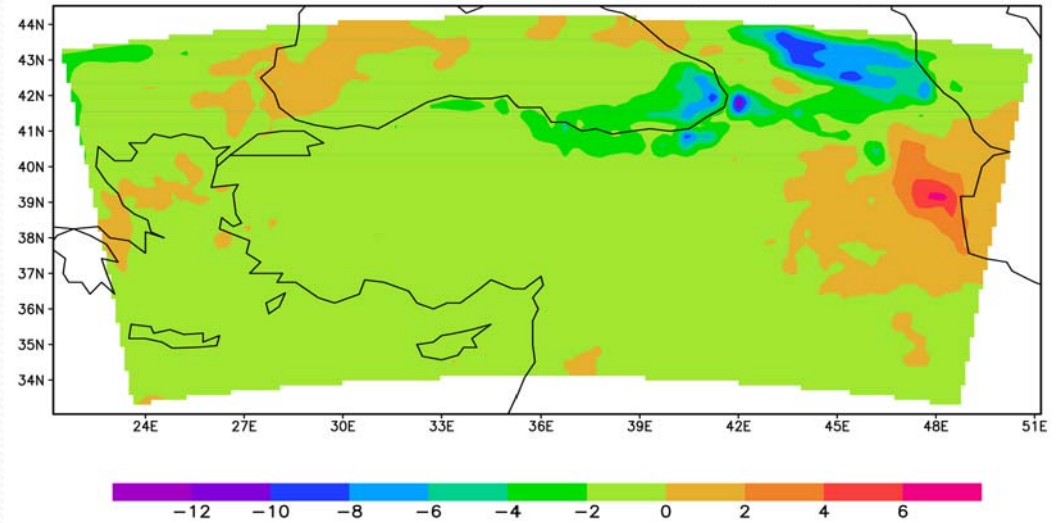


2070-1990 COMPARISON

2070 SUMMER - 1990 SUMMER

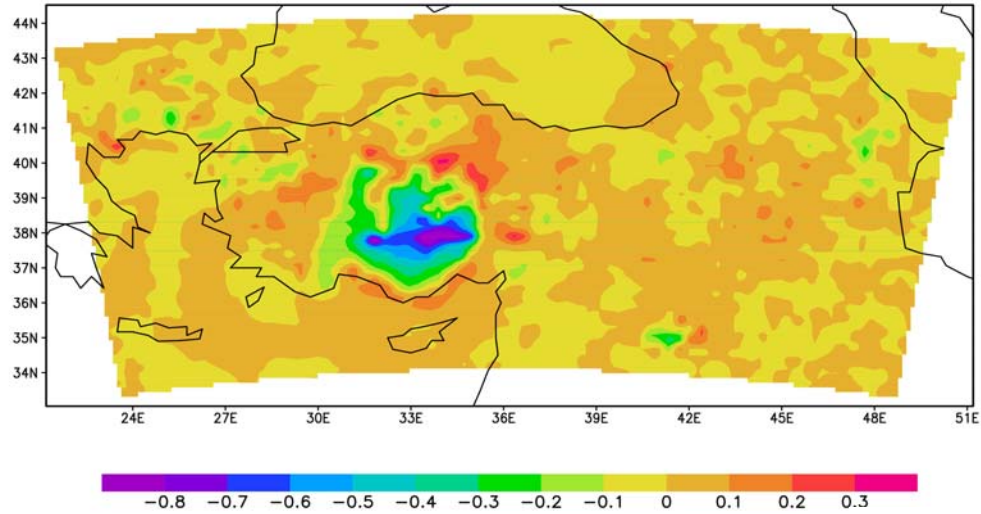


2070 SUMMER - 1990 SUMMER (Precipitation)

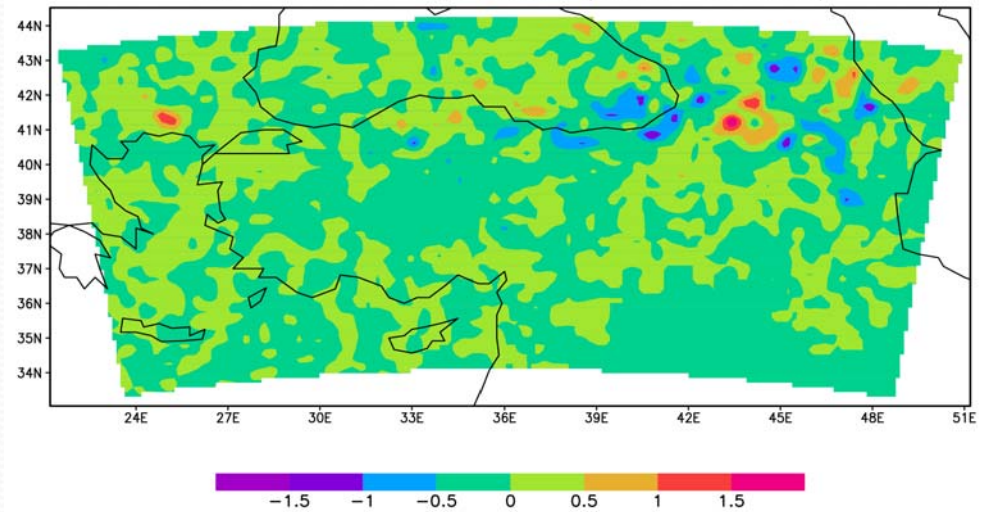


1990 LANDUSE COMPARISON

1990 SUMMER (DESERT-ORIGINAL)

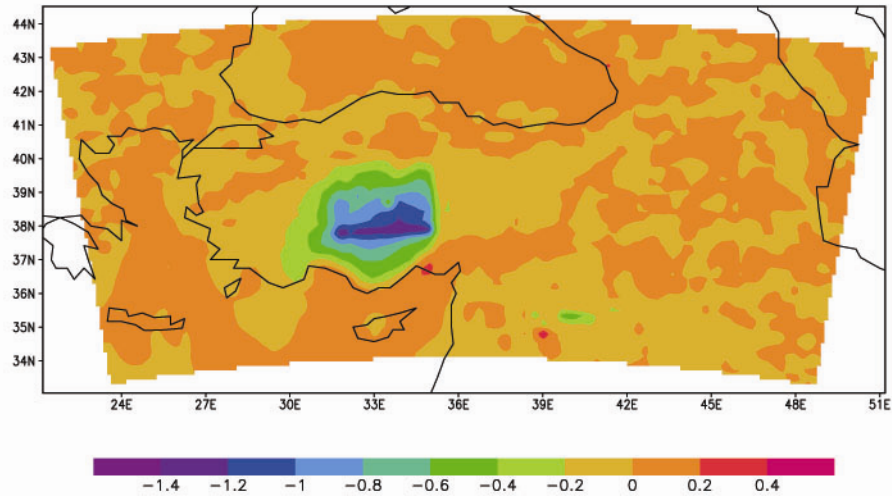


1990 SUMMER PRECIPITATION (DESERT-ORIGINAL)



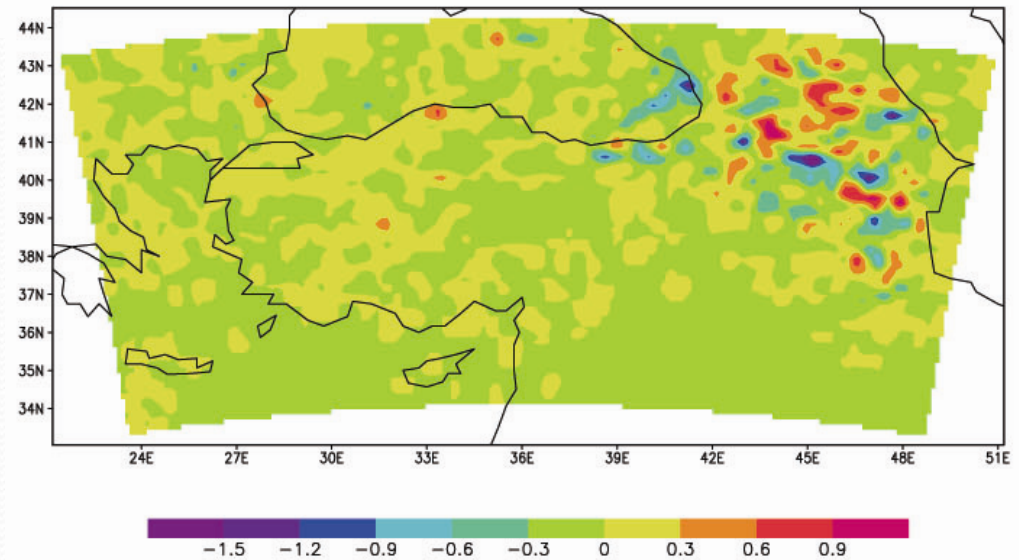
2070 LANDUSE COMPARISON

2070 SUMMER SEASON LANDUSE CHANGED – ORIGINAL



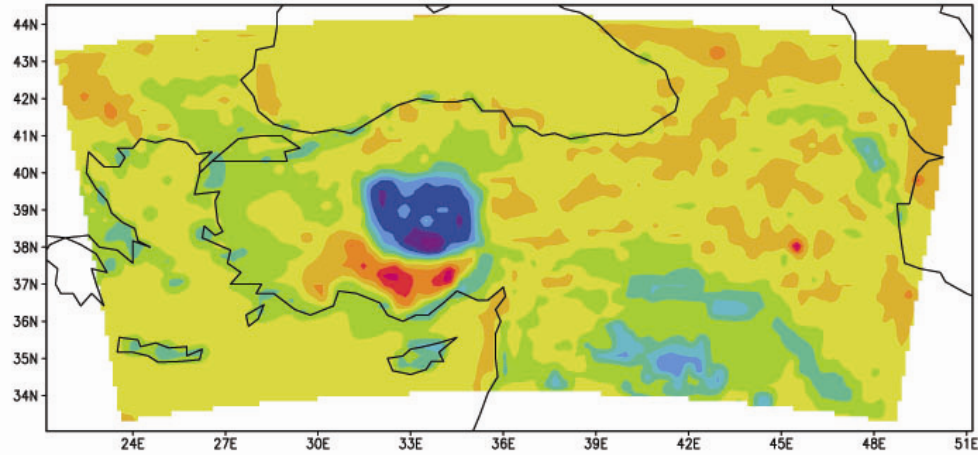
GrADS: COLA/IGES

2070 SUMMER SEASON PRECIPITATION LANDUSE CHANGED – ORIGINAL



2070 LANDUSE ANOMALY

2070 SUMMER (FOREST-ORIGINAL)



2070 SUMMER (FOREST-ORIGINAL) PRECIPITATION

