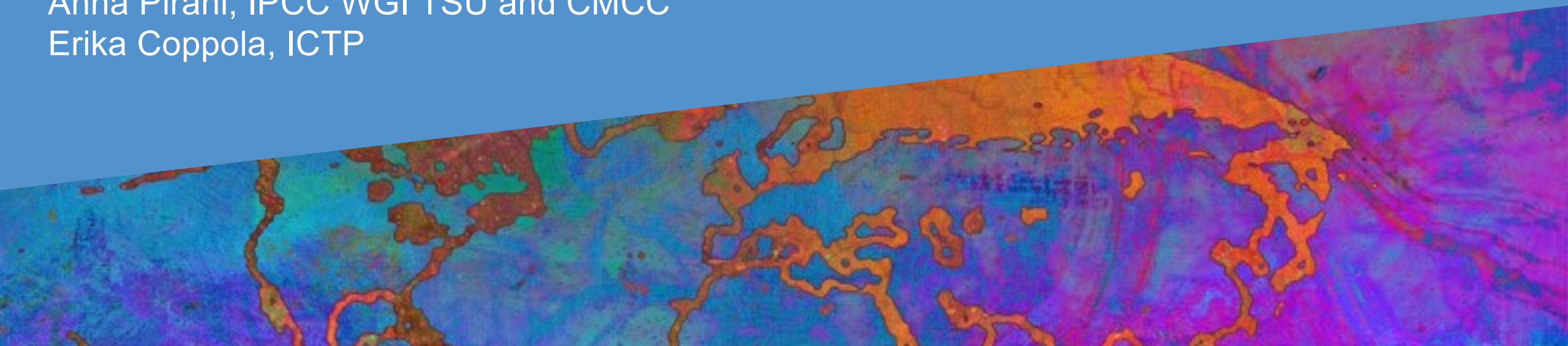


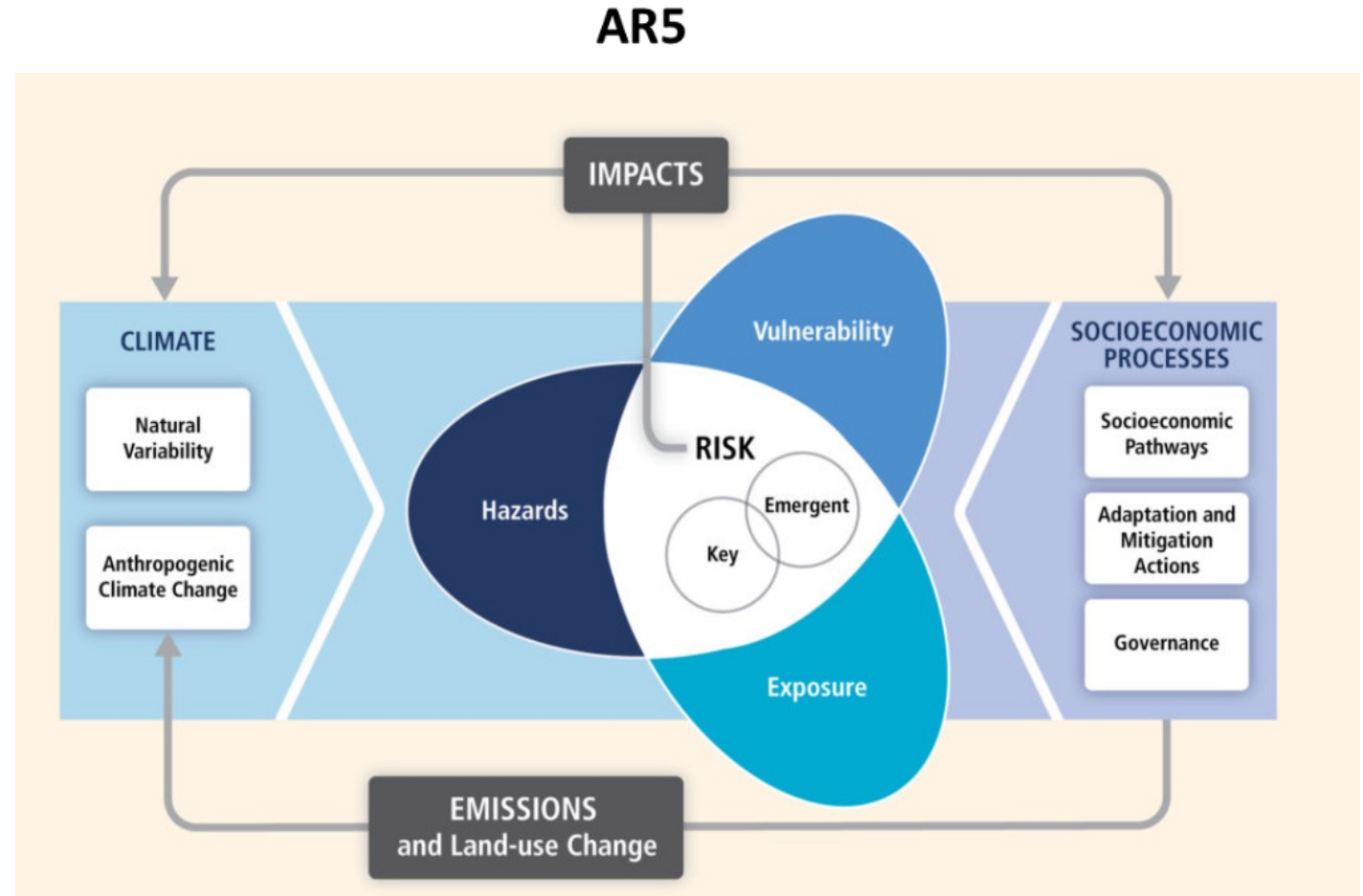
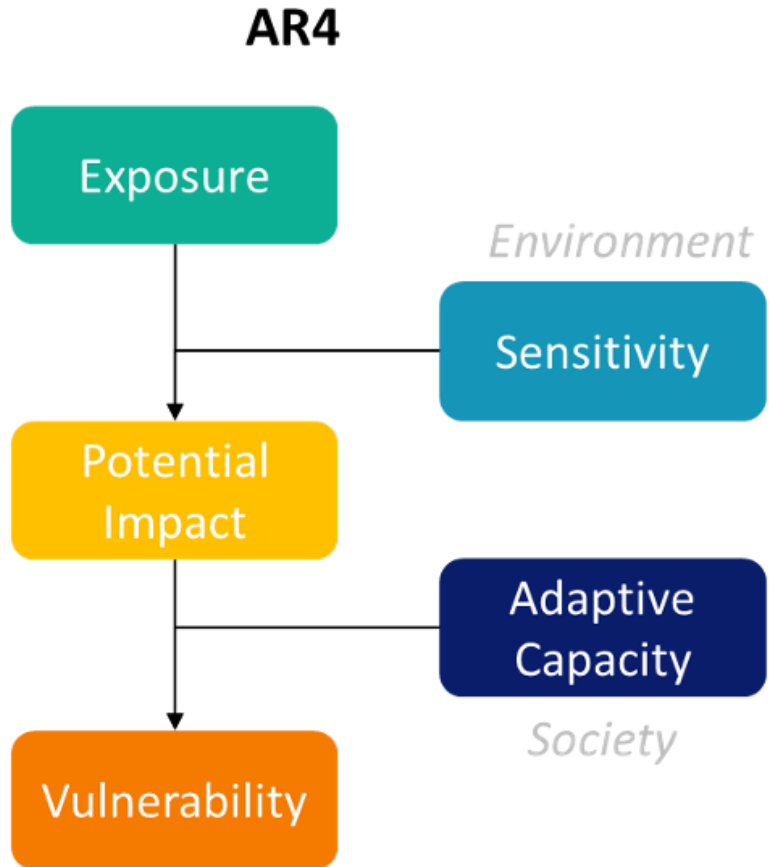
# The assessment of climate risk to support adaptation and build resilience

Introduction - Workshop Climate Information for Risk Assessment and Regional Adaptation

Anna Pirani, IPCC WGI TSU and CMCC  
Erika Coppola, ICTP



# Assessment of climate risk – as it was

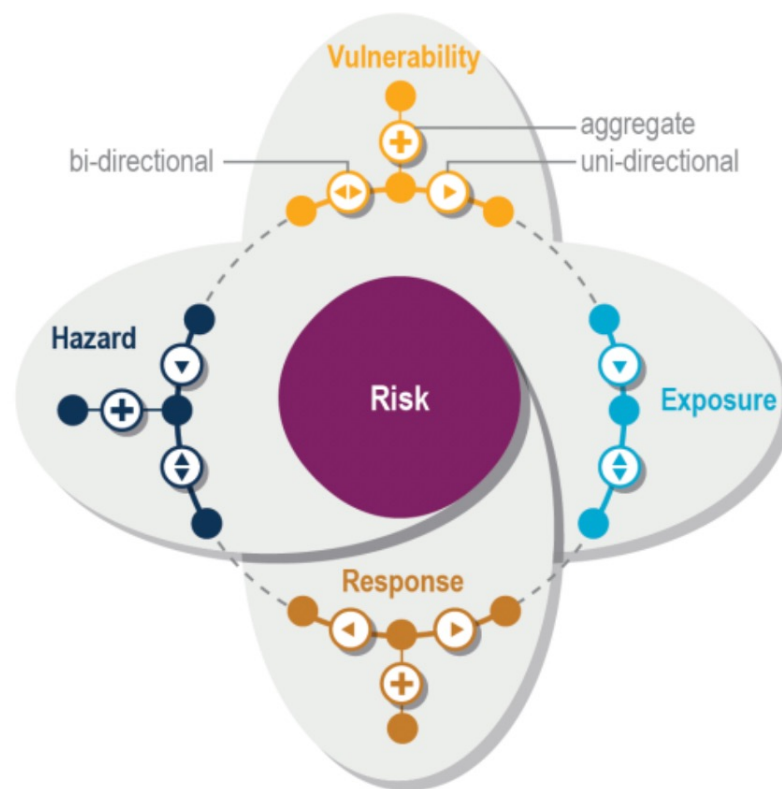


AR5 WGII Figure 19.1

The shift of concepts from climate vulnerability to climate risk (GIZ and Eurac Research, 2017)

# AR6 climate risk framework

Linking climatic impact-drivers with societal and ecosystem vulnerabilities and exposure, and consequences of responses to climate change



*3.3-3.6 billion people  
in highly vulnerable contexts*

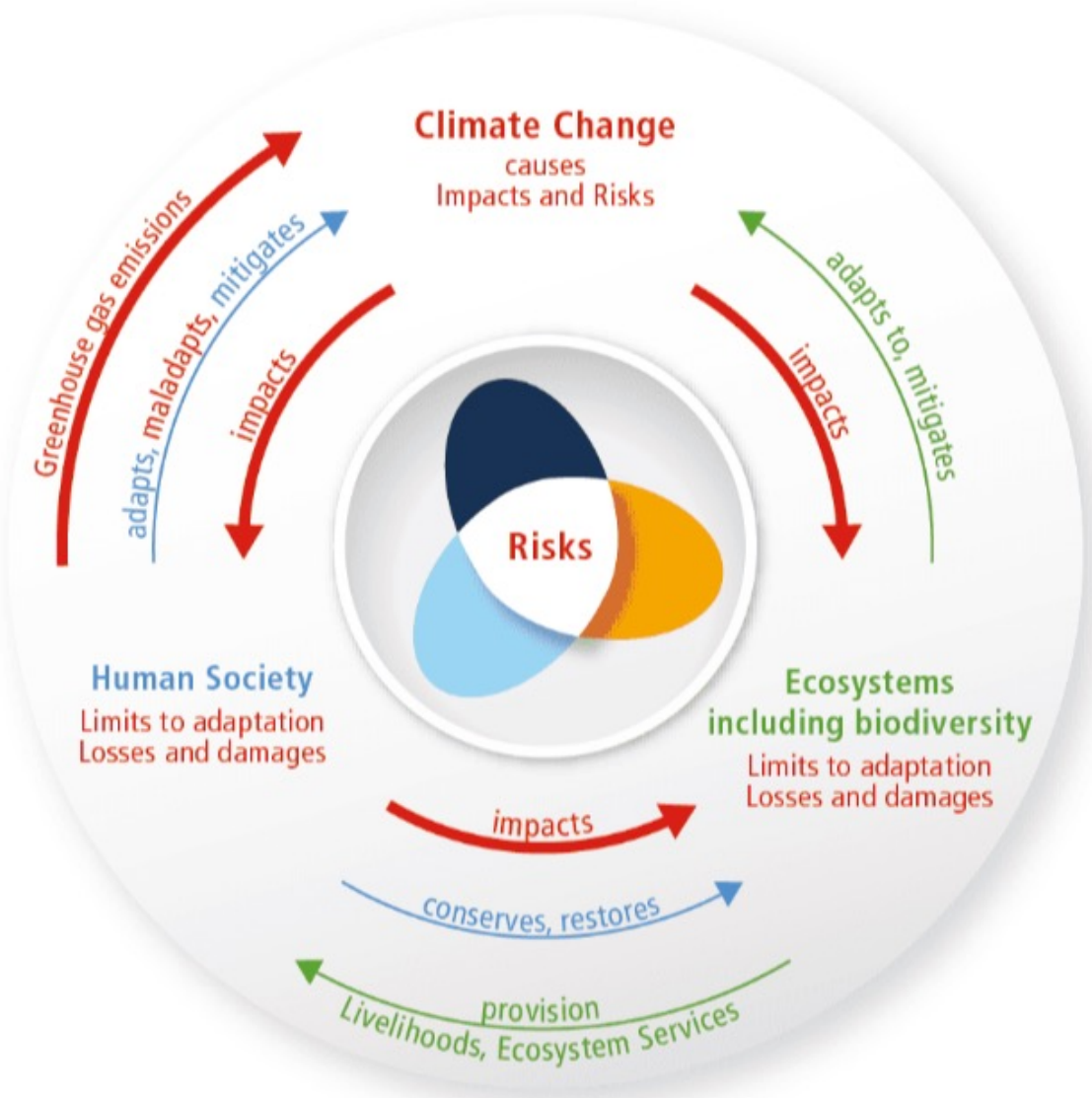
*Ecosystems*

*1 billion people exposed  
to sea level rise by 2050*

*Responses*

- *Maladaptation*
- *Pressures on land use*

# Adaptation and building resilience



# Climate risk assessment in practice

---

Review of literature related to national adaptation plans and strategies in the European context

- use of outdated concepts and need to include risk
- barriers to use of multiple datasets
- need to move to multi-hazard, compound and cascading risk approach,
- need more on vulnerability and exposure
- inclusion of response effects
- need for qualitative risk metrics, not only monetary terms
- increasing maladaptation awareness
- stakeholder involvement and co-design
- good practices examples

# International cooperation to build capacity and resilience

## Horizon Europe Mission: Adaptation to climate change including societal transformation

### **ACCELERATING THE TRANSFORMATION**

Turning the urgent challenge of adapting to climate change into an opportunity to make Europe more climate prepared, resilient and just





The Abdus Salam  
**International Centre  
for Theoretical Physics**

**Workshop on Climate  
Information for Risk  
Assessment and Regional  
Adaptation**

from Global Scale Climate Projections  
to Local Scale Climate Hazards



	Monday 5th June	Tuesday 6th June	Wednesday 7th June	Thursday 8th June	Friday 9th June
09:00		Sea level rise, coastal risks and adaptation	Ecosystems and biodiversity	Interactive Atlas and FAIR data Lab	Agriculture and land use
10:00	Overview of the AR6 risk framing, climatic impact-drivers		Information design for valuable visual communication		
	Risk and transformative adaptation				
11:00	Future socio-economic scenarios informing risk assessment	Participant invited contributions and discussion	Participant invited contributions and discussion	Burning embers factory and visualisation lab	Climate Risk Assessments as a catalyst for transformative adaptation action
14:00	The risk concept and introduction to the Workshop	Media engagement lab	Water availability and security	Heat, habitability Health, epidemiology	Discussion on reasearch and assessment priorities - developing a community perspective
	Discussion on research and assessment priorities - developing a community perspective				
16:00		Social afternoon, networking, ice breaker	Regional information and outreach lab	From theory to practice to derive an assessment of climatic impact-drivers	Workshop wrap-up
17:00					