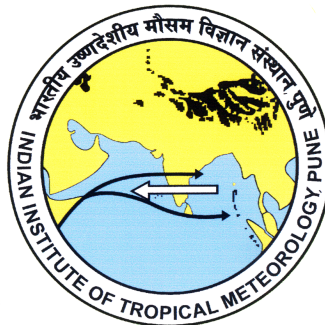
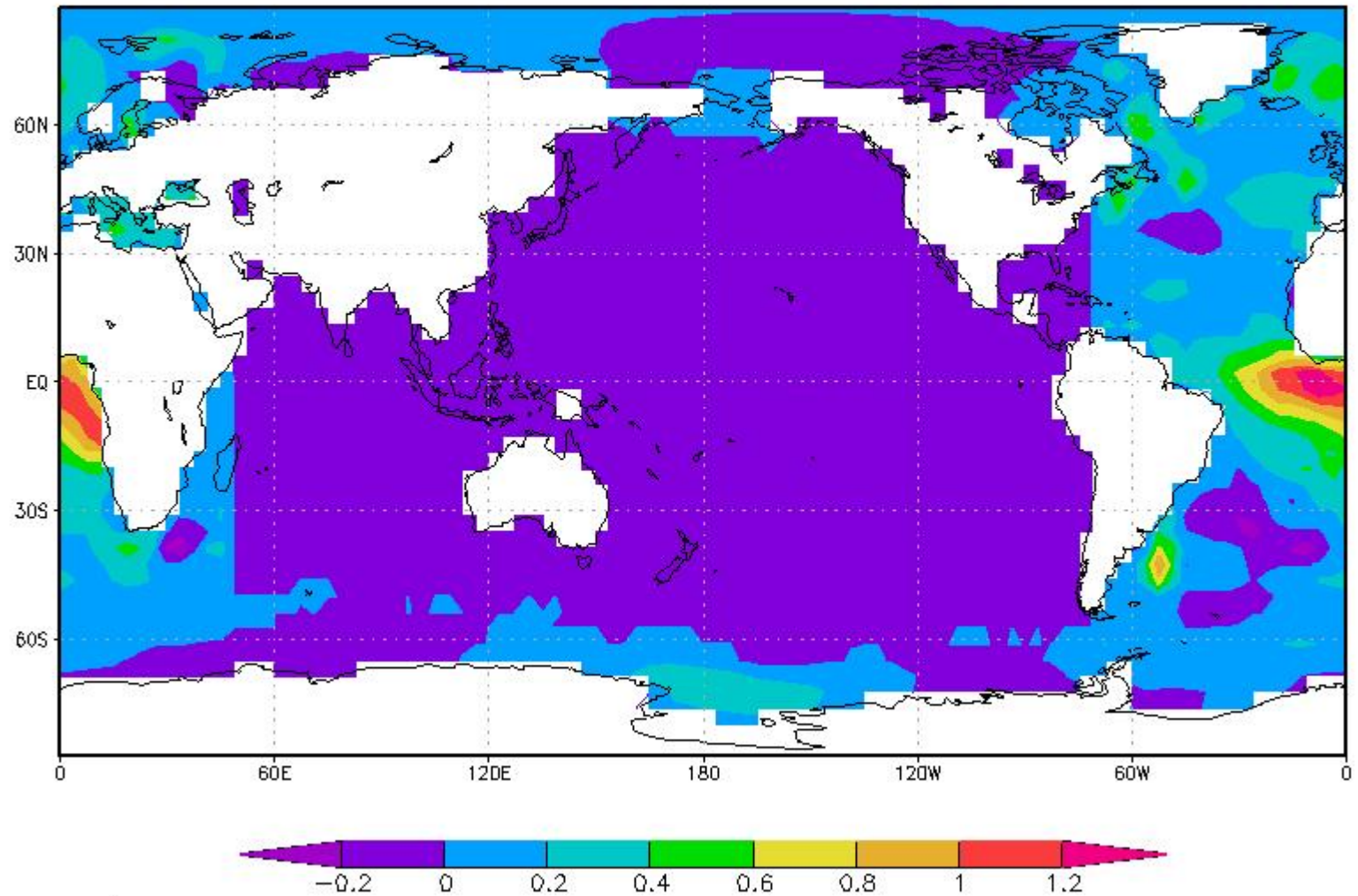


Simulation of Atlantic Nino 3 (Positive & Negative Phases) for July and August using Speedy Model

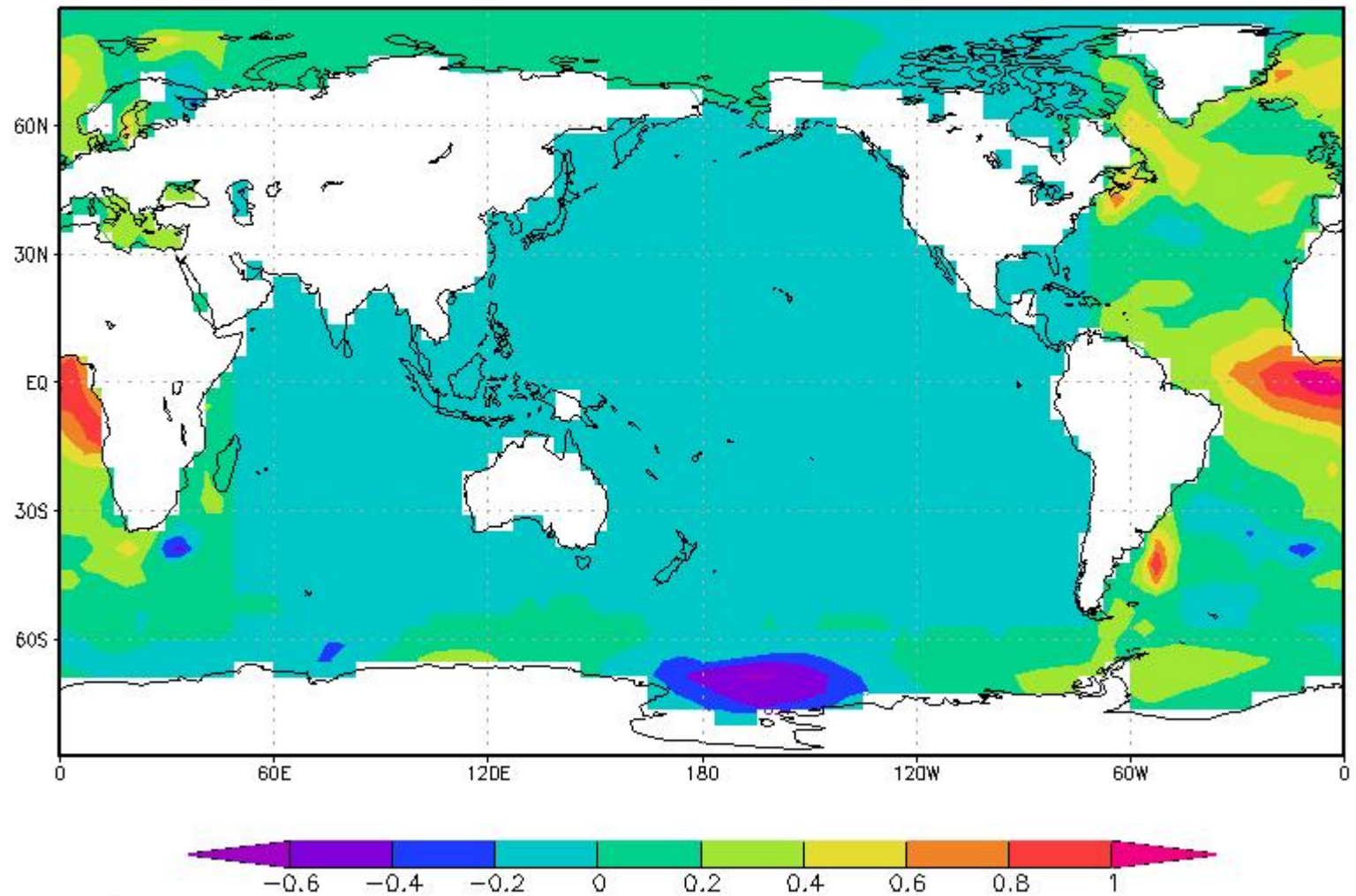
**Ramesh K. Yadav, Manish K. Joshi,
Vineet K. Singh, & Roxy M. Koll
(IITM, India)**



SST Difference for July



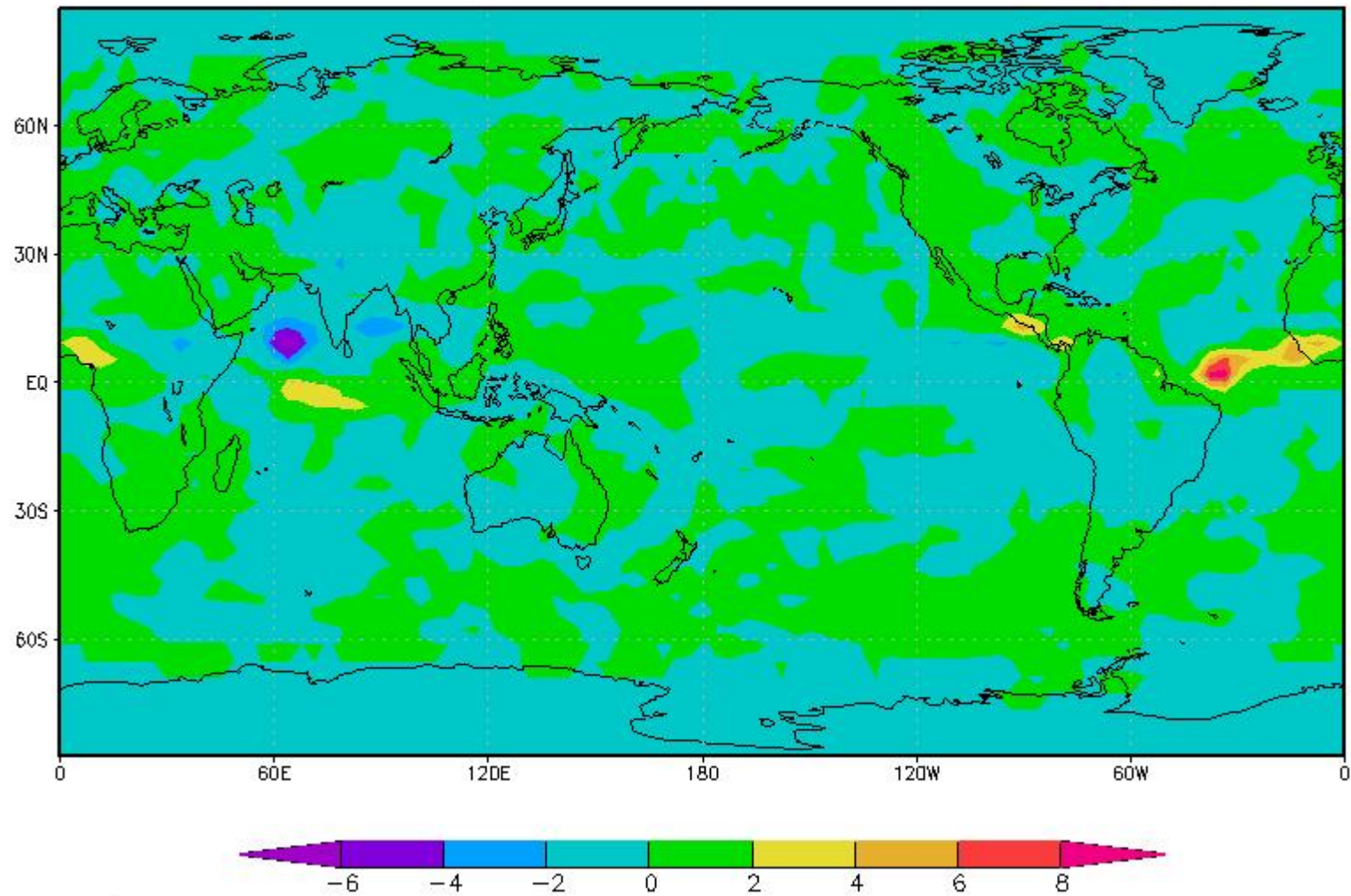
SST Difference for August



GrADS: COLA/IGES

2016-10-27-17:41

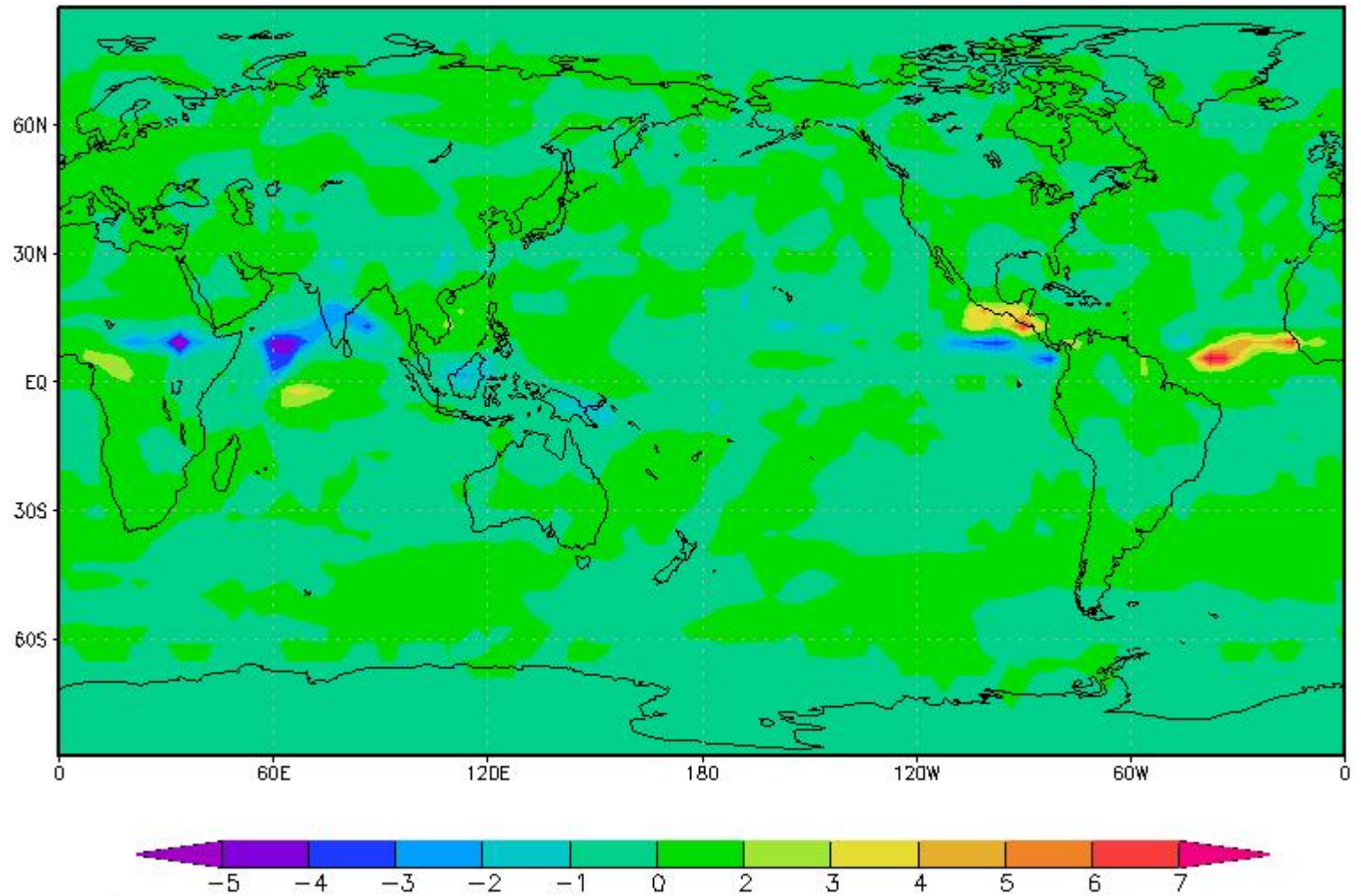
Difference of Convective Precipitation for July



GrADS: COLA/IGES

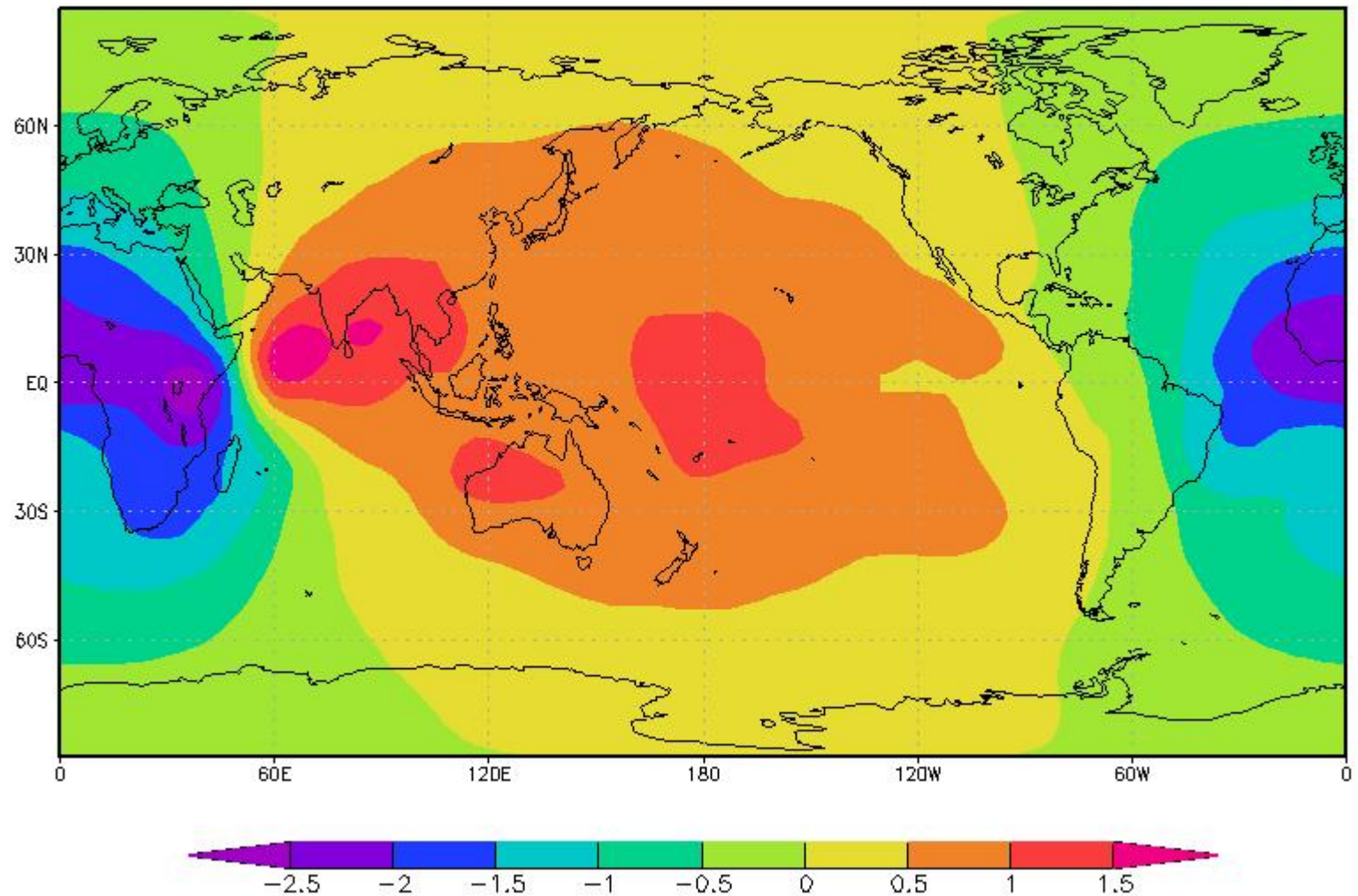
2016-10-27-18:06

Difference of Convective Precipitation for August



2016-10-27-18:08

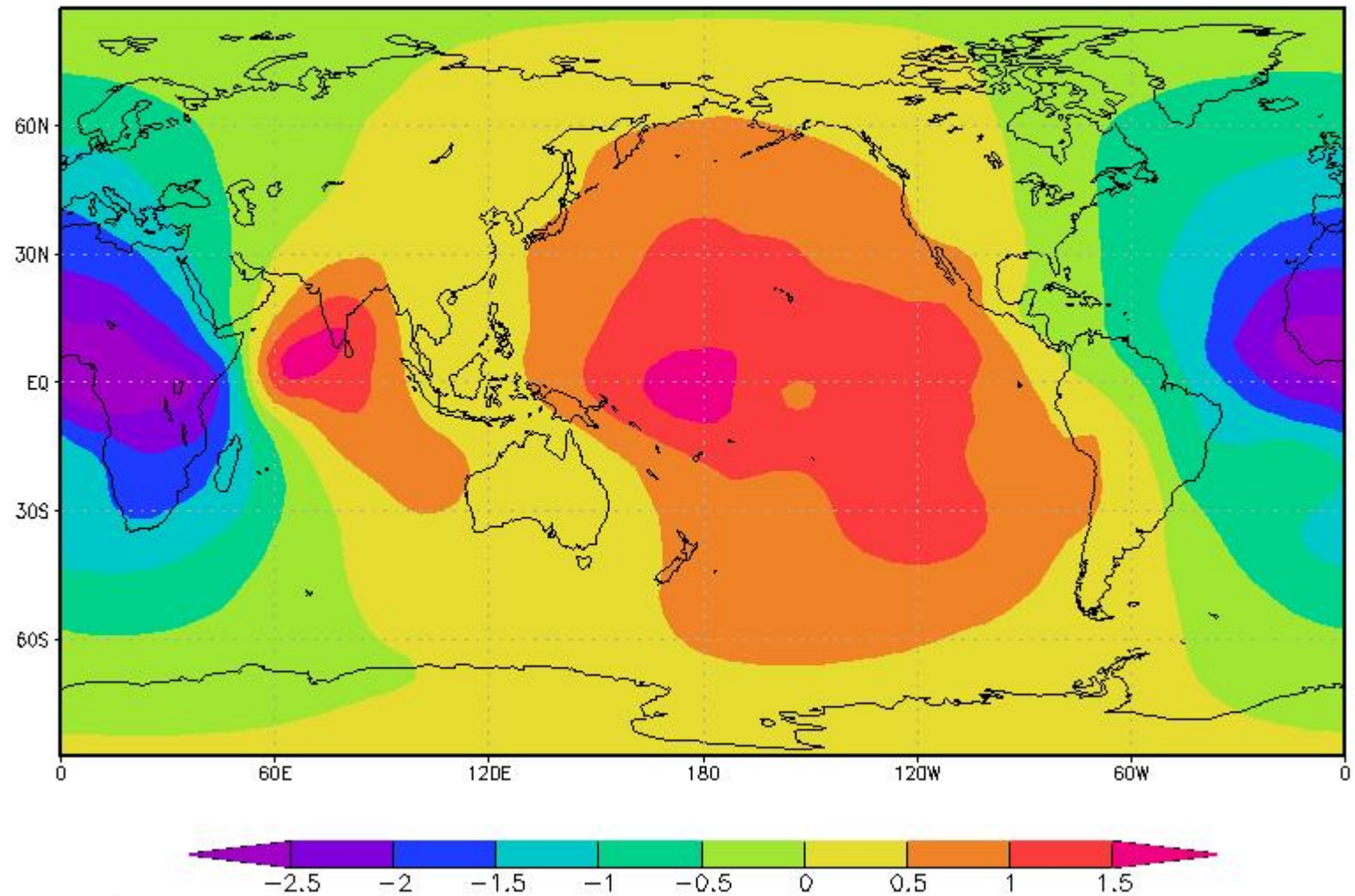
Difference of Velocity Potential for July



GrADS: COLA/IGES

2016-10-27-17:52

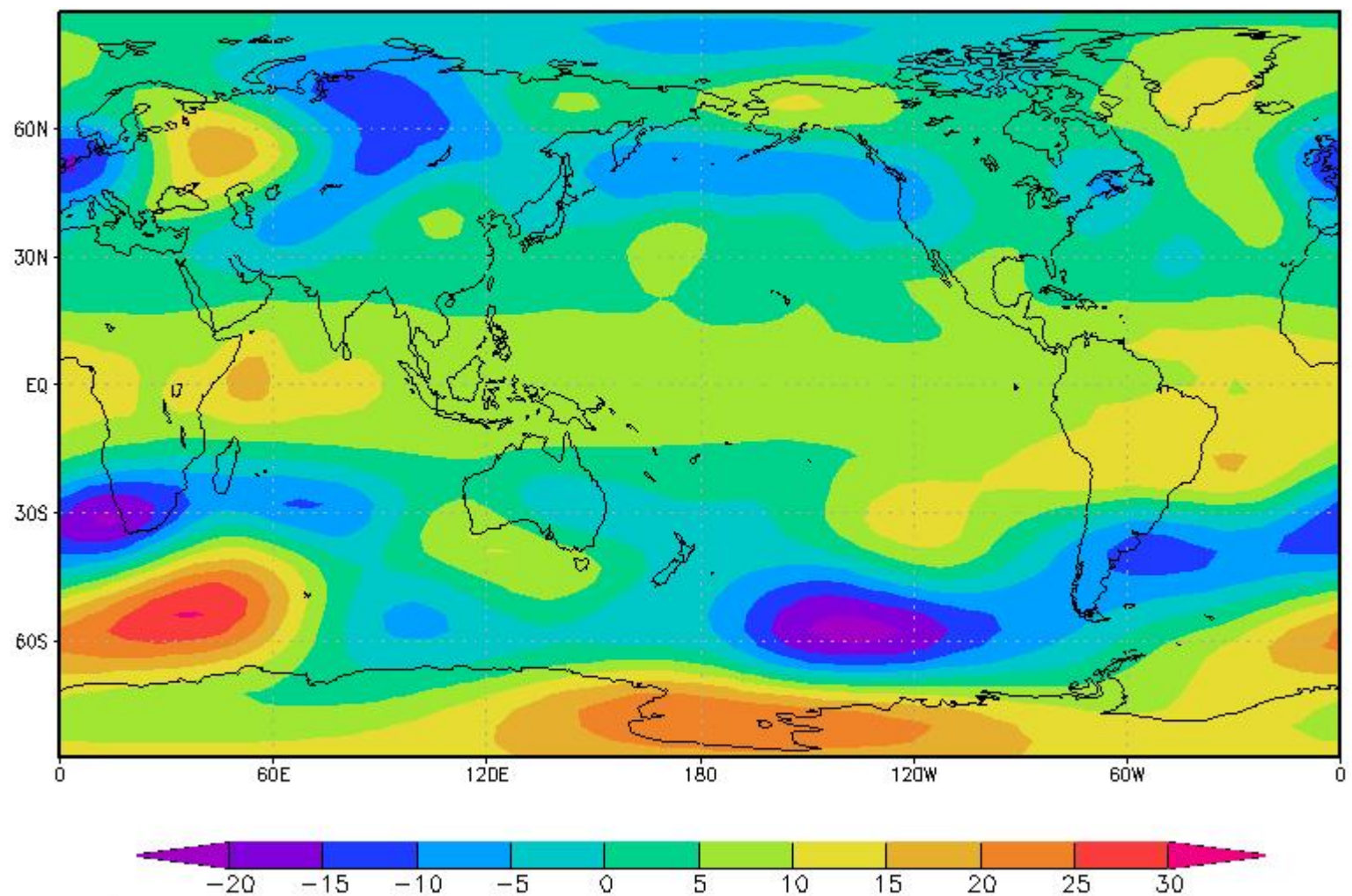
Difference of Velocity Potential for August



GrADS: COLA/IGES

2016-10-27-17:54

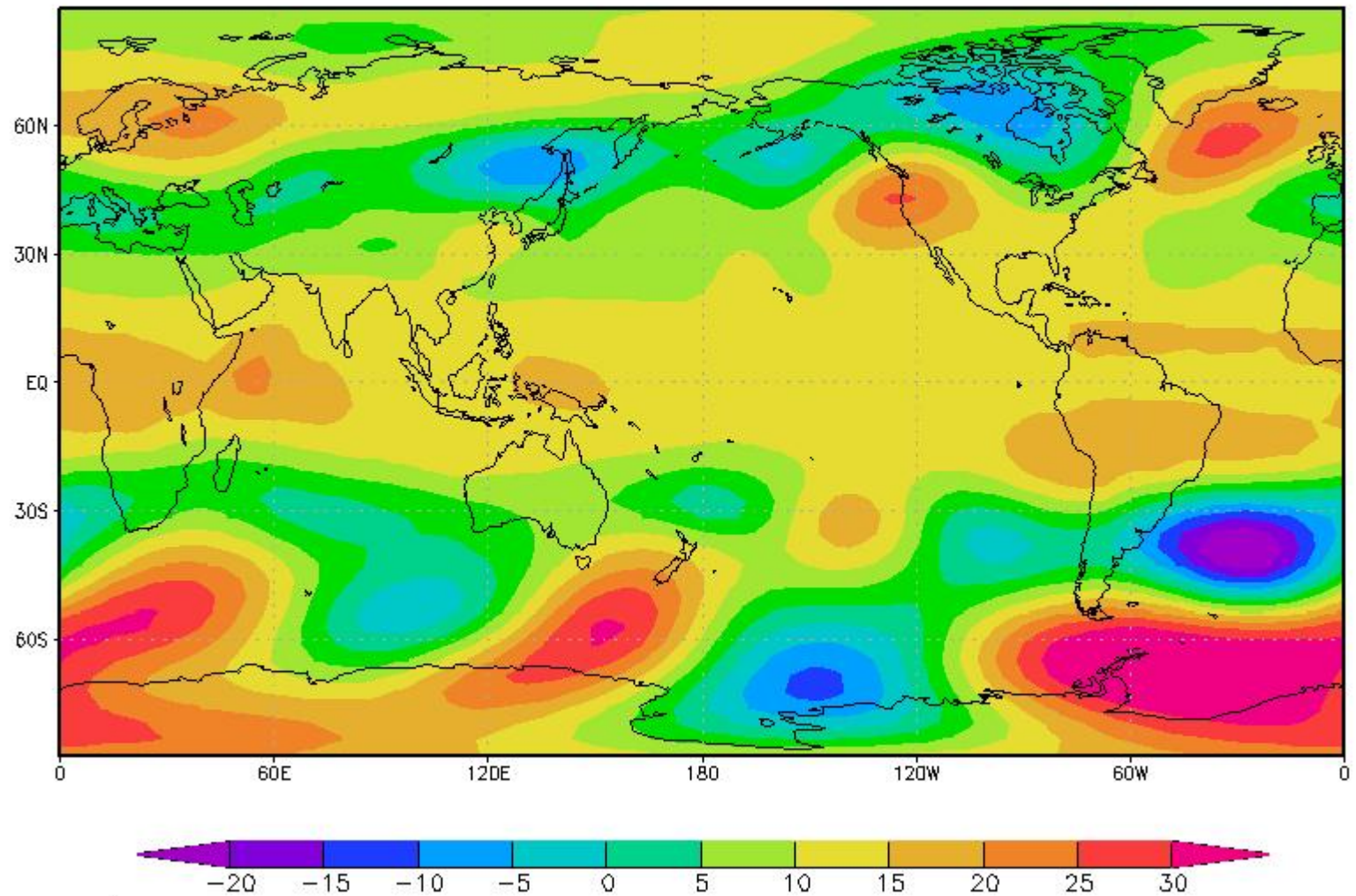
Difference of Geopotential Height at 200hPa for July



GrADS: COLA/IGES

2016-10-27-17:58

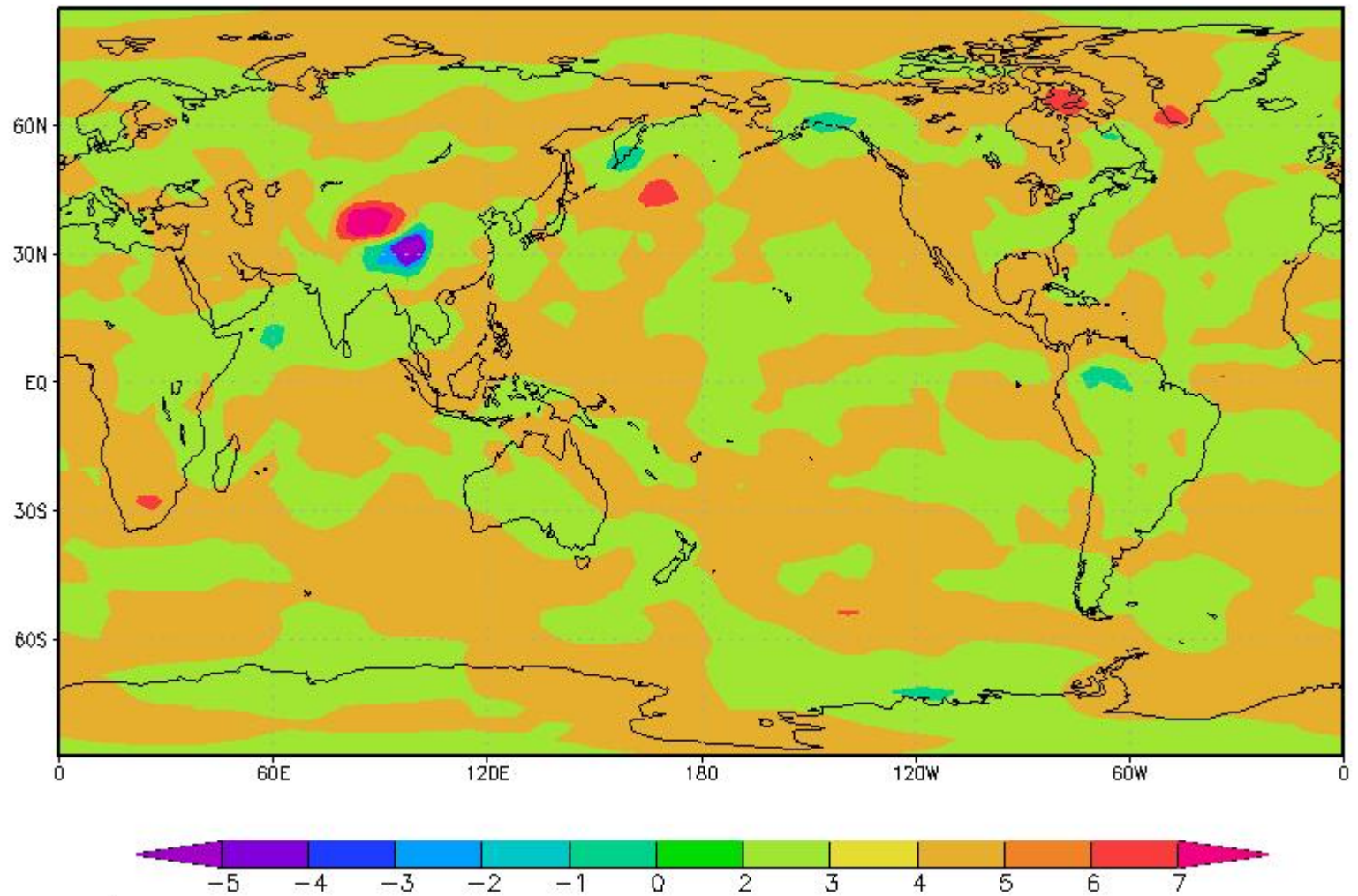
Difference of Geopotential Height at 200hPa for August



GrADS: COLA/IGES

2016-10-27-17:58

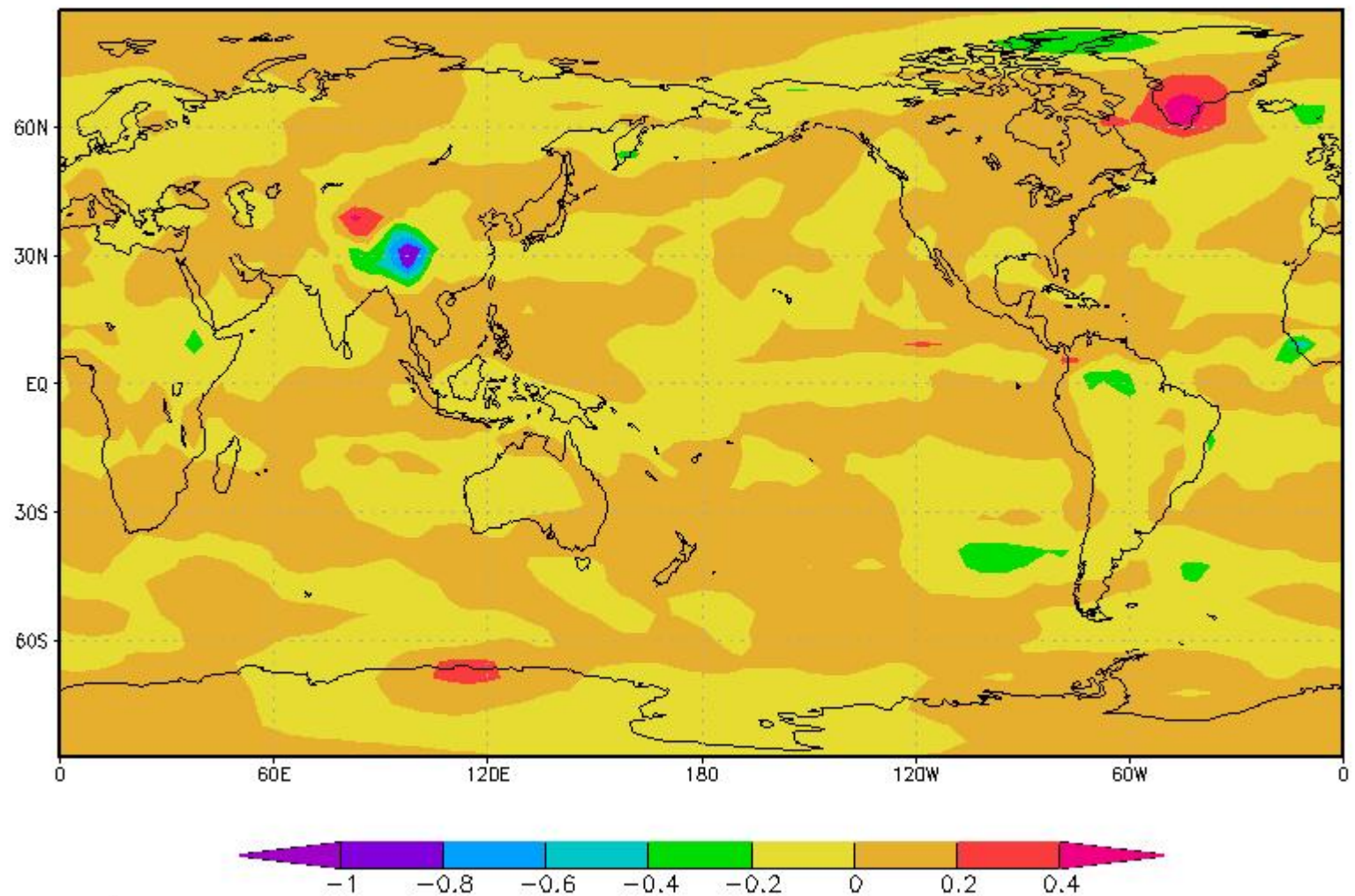
Difference of Large Scale Precipitation for July



GrADS: COLA/IGES

2016-10-27-18:08

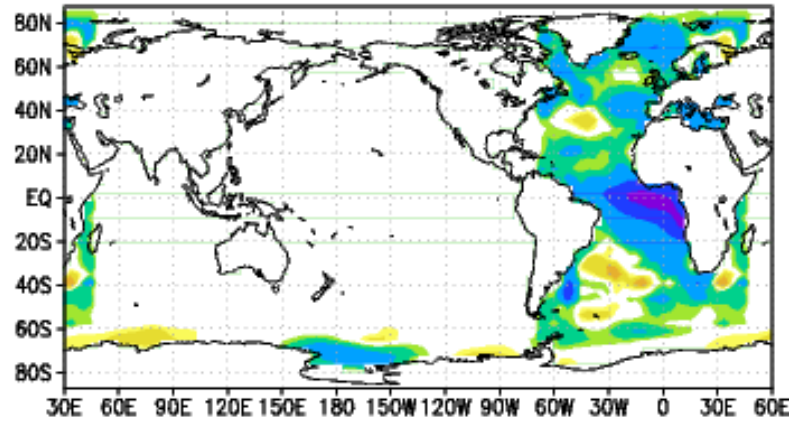
Difference of Large Scale Precipitation for August



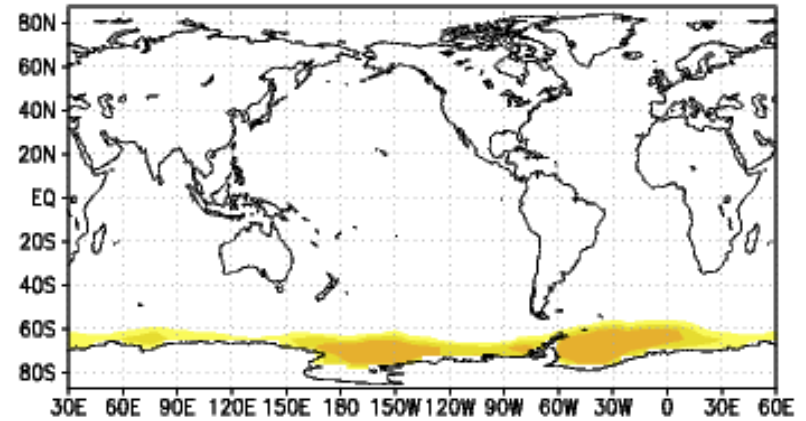
Signal-to-Noise-Ratio

Signal-to-Noise Ratio SST

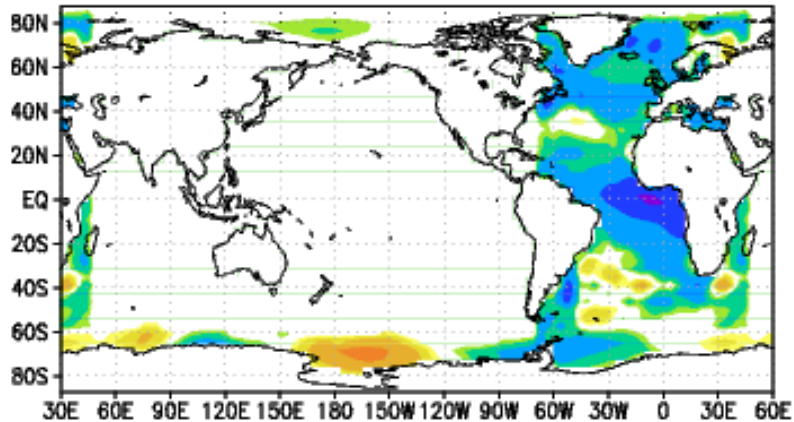
a) sst response July



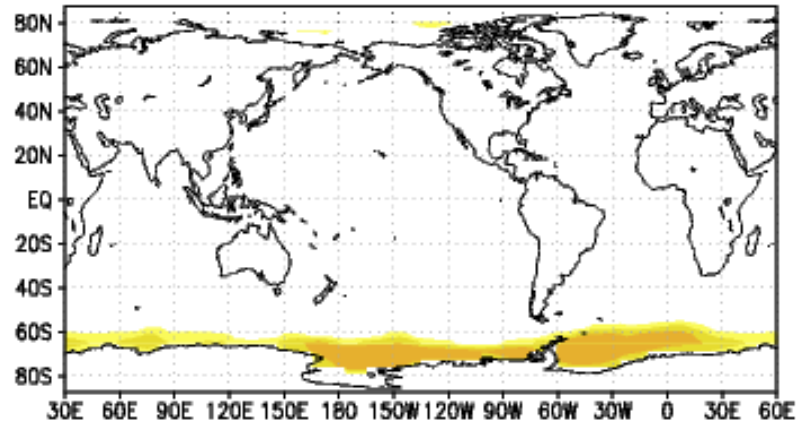
b) sst noise July



c) sst response Aug

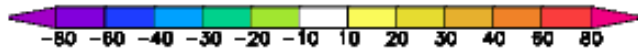
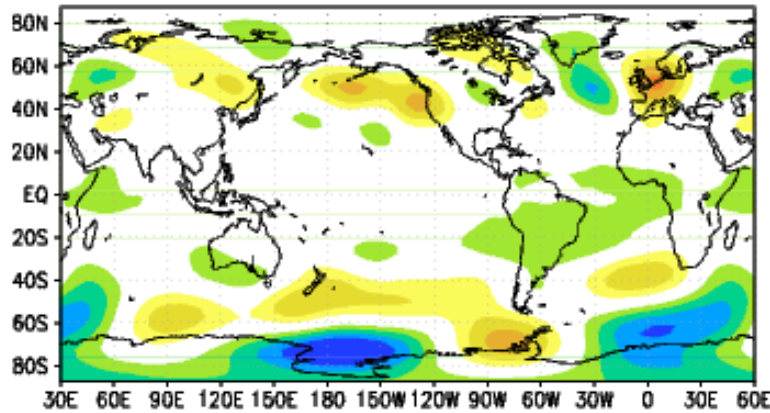


d) sst noise Aug

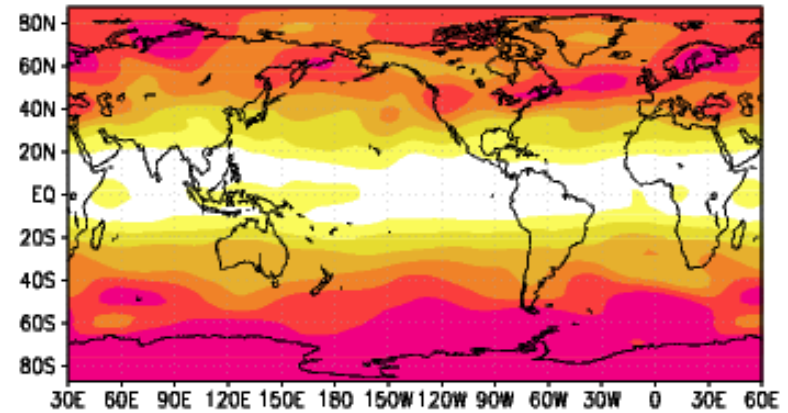


Signal-to-Noise Ratio Z200

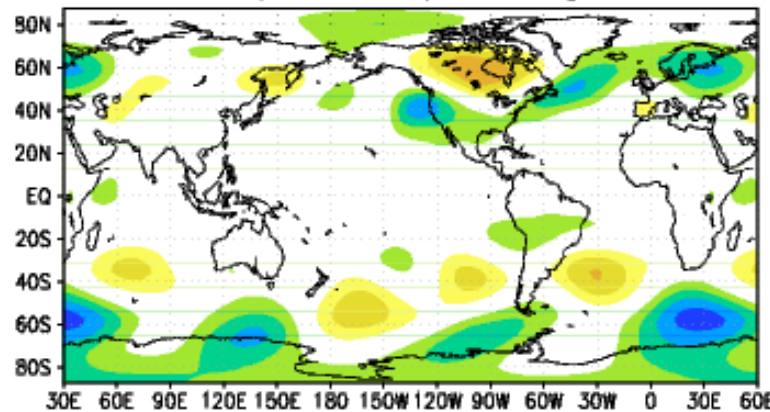
a) z200 response July



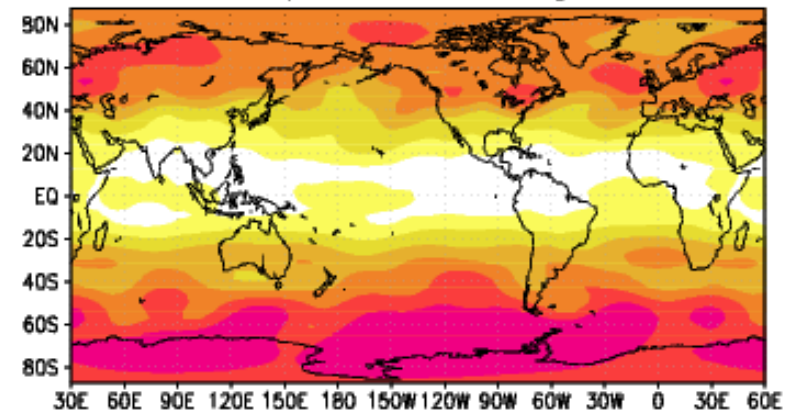
b) z200 noise July



c) z200 response Aug

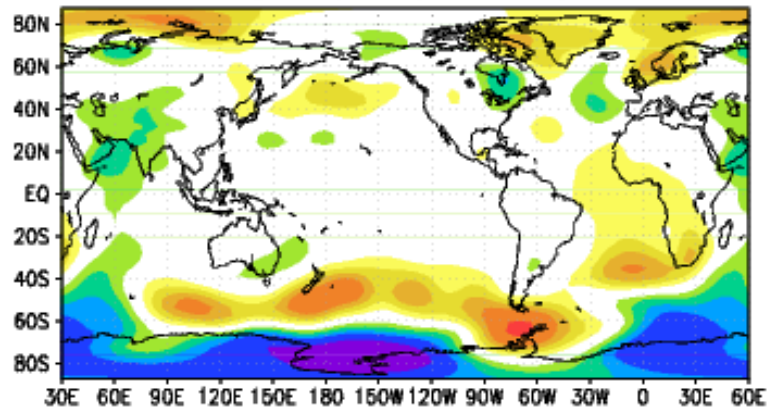


d) z200 noise Aug

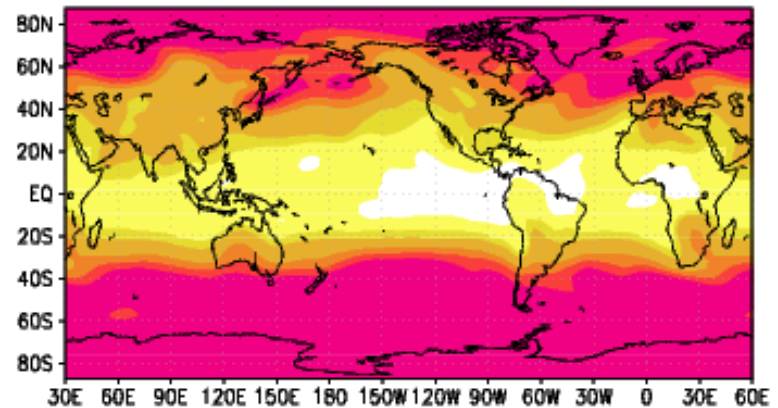


Signal-to-Noise Ratio MSLP

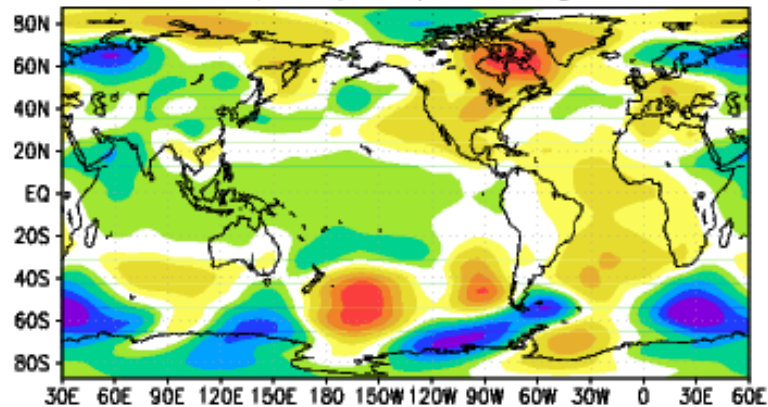
a) mslp response July



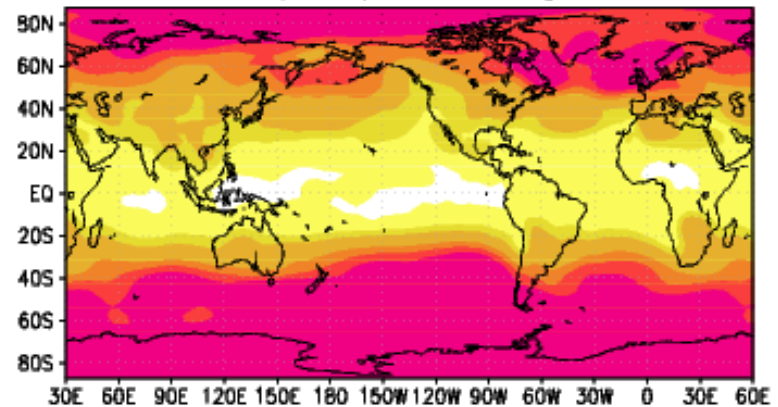
b) mslp noise July



c) mslp response Aug

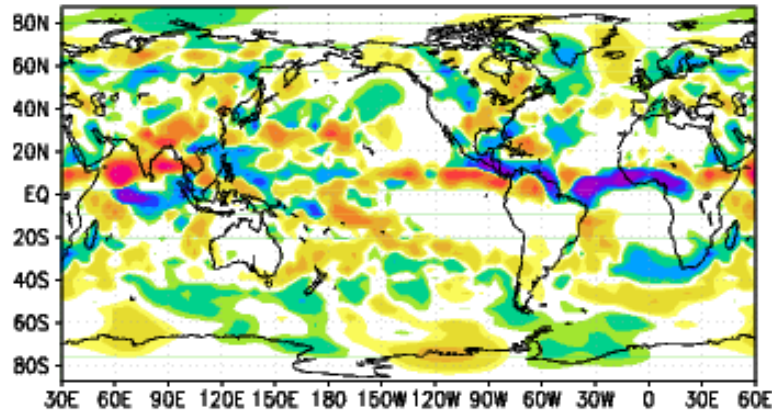


d) mslp noise Aug

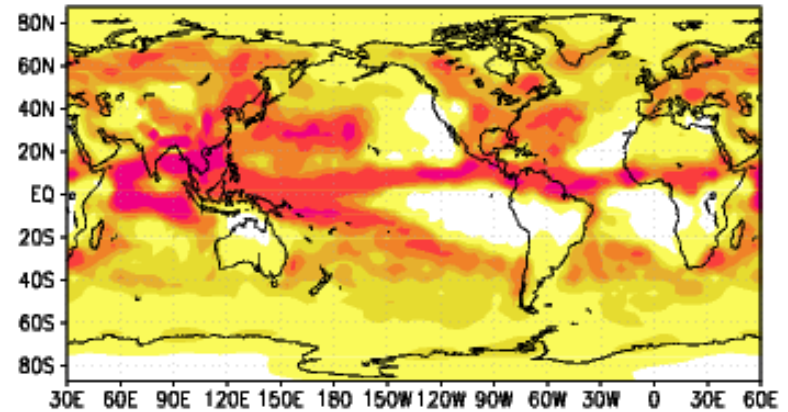


Signal-to-Noise Ratio Precipitation

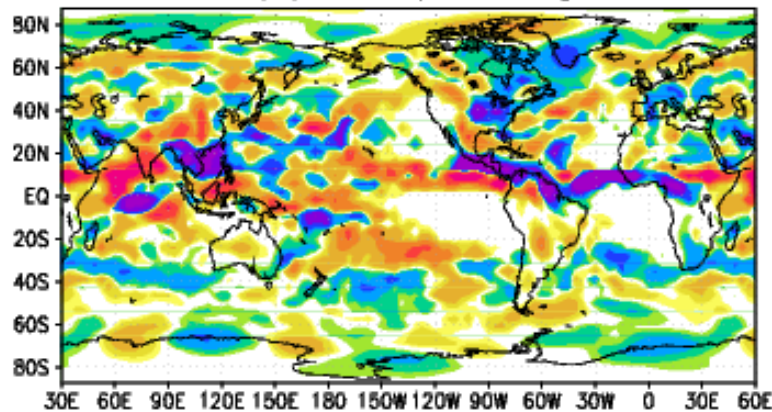
a) prec response July



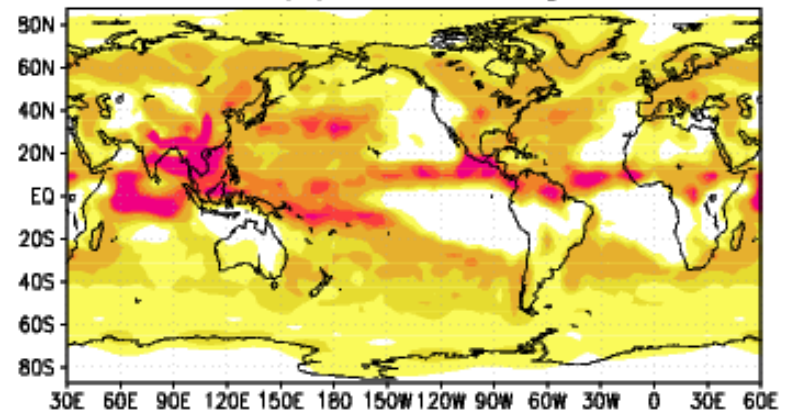
b) prec noise July



c) prec response Aug



d) prec noise Aug



Thank You