

Hydration of Nuclear Waste Glass in Vapor Phase

- Jeet PATEL

Joint ICTP-IAEA International School on Nuclear Waste Vitrification
23 - 27 September 2019, Trieste, Italy



Laboratory Introduction

Subatomic Physics and Associated Technologies (SUBATECH) Laboratory

- High energy universe
- Nuclear and environment (**Radiochemistry Group**)
- Nuclear and Health (**Radiochemistry Group**)

Under the Guidance of



Prof. Abdesselam ABDELOUAS
Head of Radiochemistry Group
(SUBATECH Laboratory)



Dr. Tomo SUZUKI-MURESAN
Associate Professor, IMT Atlantique
(SUBATECH Laboratory)



Ms. Haohan ZHANG
Ph.D. fellow
(SUBATECH Laboratory)

Subatech laboratory & IMT Atlantique (Nantes)





Outlines

- Background
- Objectives
- Literature review
- Materials and Methods
- Characterization Techniques
- Results and Discussion
- Conclusion

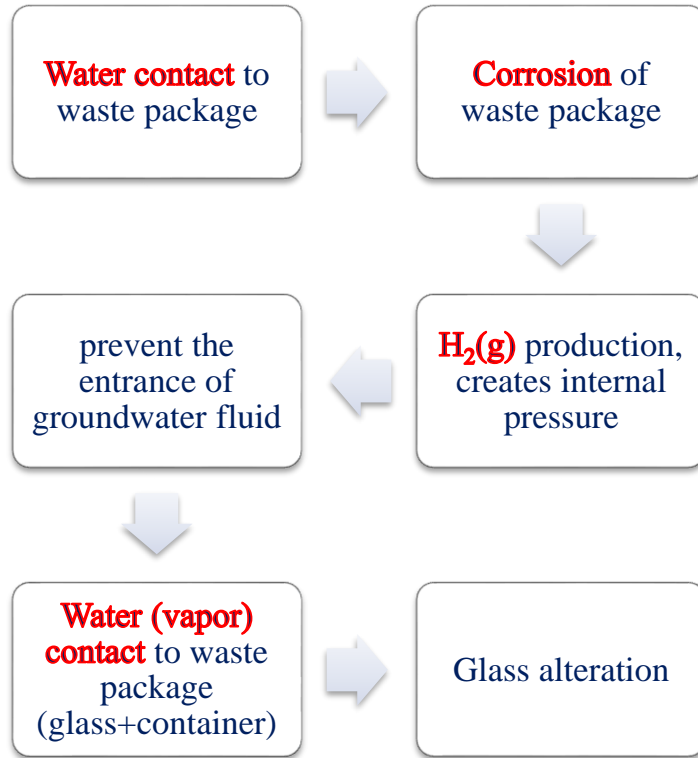
Background

- French policy for Spent Nuclear Fuel
 - recycling/reprocessing
- Immobilization of fission products and minor actinides in **borosilicate glass** named R7T7
- High level nuclear waste glass in **Deep geological repository**
 - Current project at Meuse/Haute-Marne centre (Cigéo project- ANDRA)



Picture- ANDRA.fr

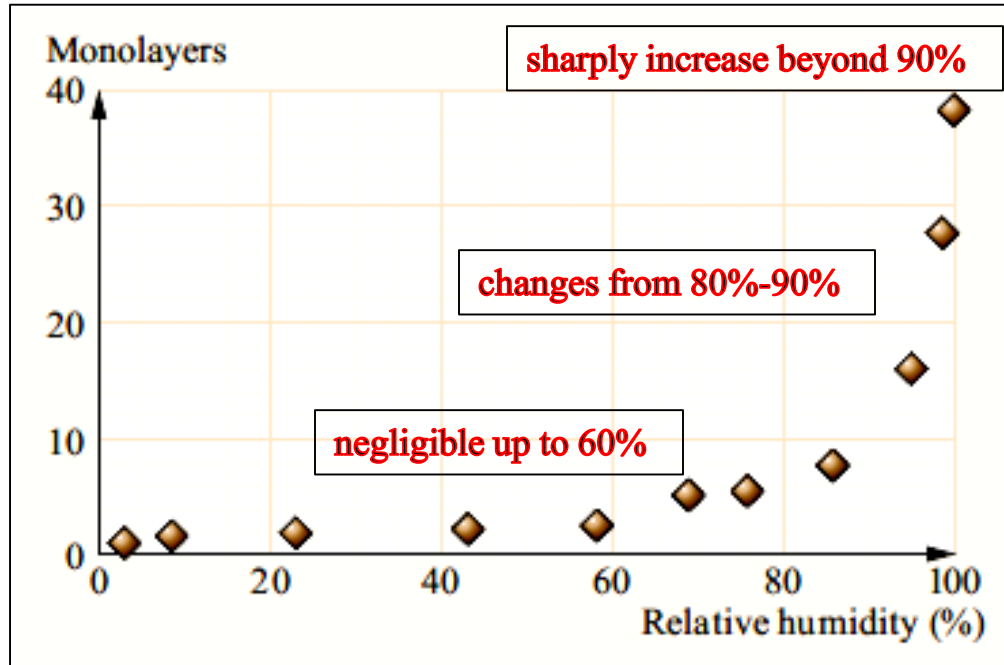
Background (cont.)



Picture- Retrieval Test of HLW package in the Cigeo Project, Andra (IGD-TP Technical Forum, Berlin- 2018)

Literature review: evolution of glass under vapor condition

- Number of water layers adsorbed on the glass surface

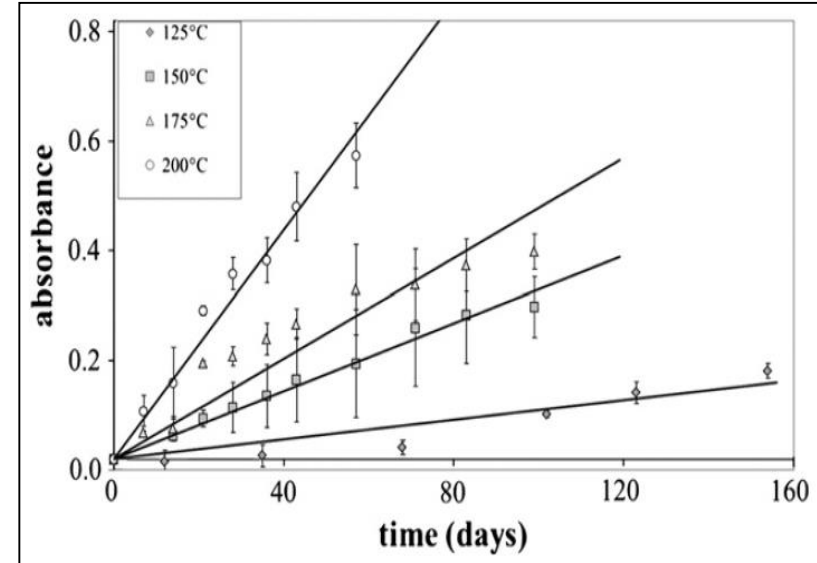
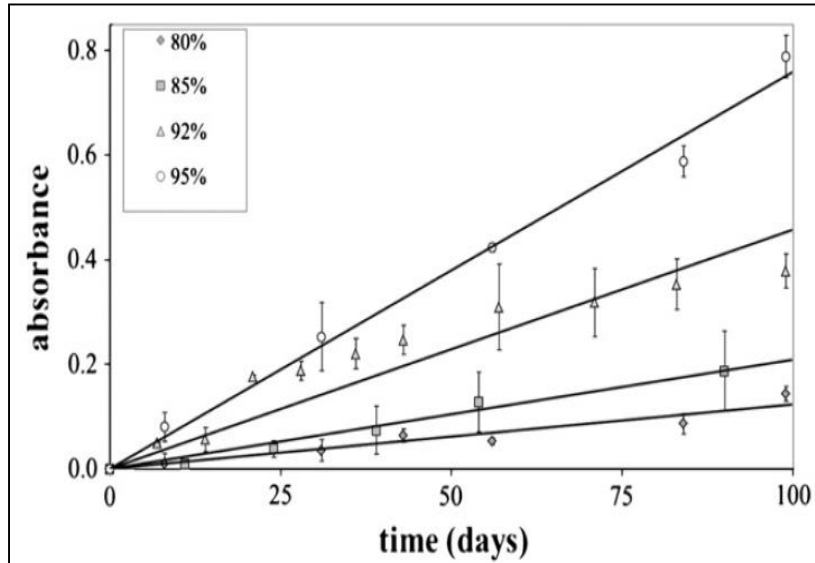


W.L.Ebert et al., The Sorption of Water on Obsidian and a Nuclear Waste Glass (1991)

Figure- Chemical durability of Glasses (Abdelouas et al.- 2019)

Literature review: evolution of glass under vapor condition (cont.)

- The hydrated layer thickness depends on **RH (%)**, **Temperature (°C)**, **Hydration time** and also **Glass composition**.



- Hydration rate increases with the RH and Temperature increases

Figures- Vapor hydration of SON68 glass from 90°C to 200°C: A kinetic study and corrosion products investigation (J. Neeway et al.- 2012)



Objectives

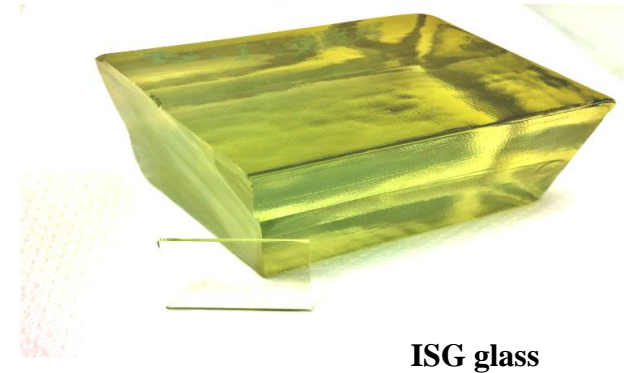
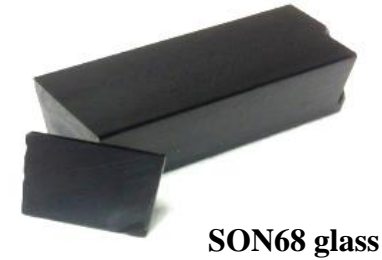
- I. Investigation of hydration kinetics in Vapor phase of French surrogate SON68 glass and ISG (International Simple Glass).
 - at two temperatures (90°C and 125°C)
 - at two RH- Relative Humidities (95% and 99%)
- II. In **Autoclave** and **Climate Test Chamber** (which is not widely used).



Materials & Methods

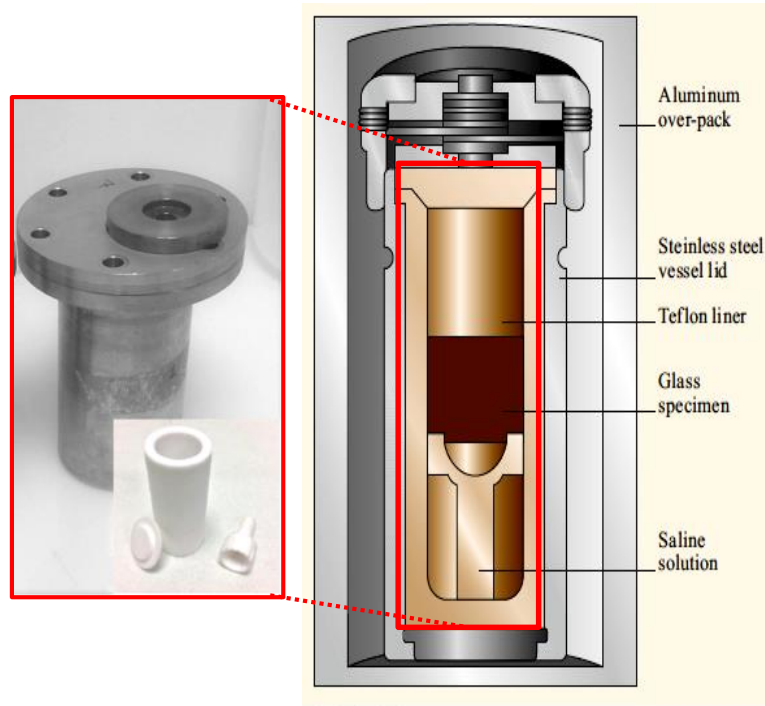
Materials

Oxides	ISG (wt %)	SON68 (wt %)
SiO ₂	56.2	45.85
B ₂ O ₃	17.3	14.02
Na ₂ O	12.2	9.86
Al ₂ O ₃	6.1	4.91
CaO	5.0	4.04
ZrO ₂	3.3	2.65
Fe ₂ O ₃	-	2.91
Li ₂ O	-	1.98
MoO ₃	-	1.70
Others	-	12.08

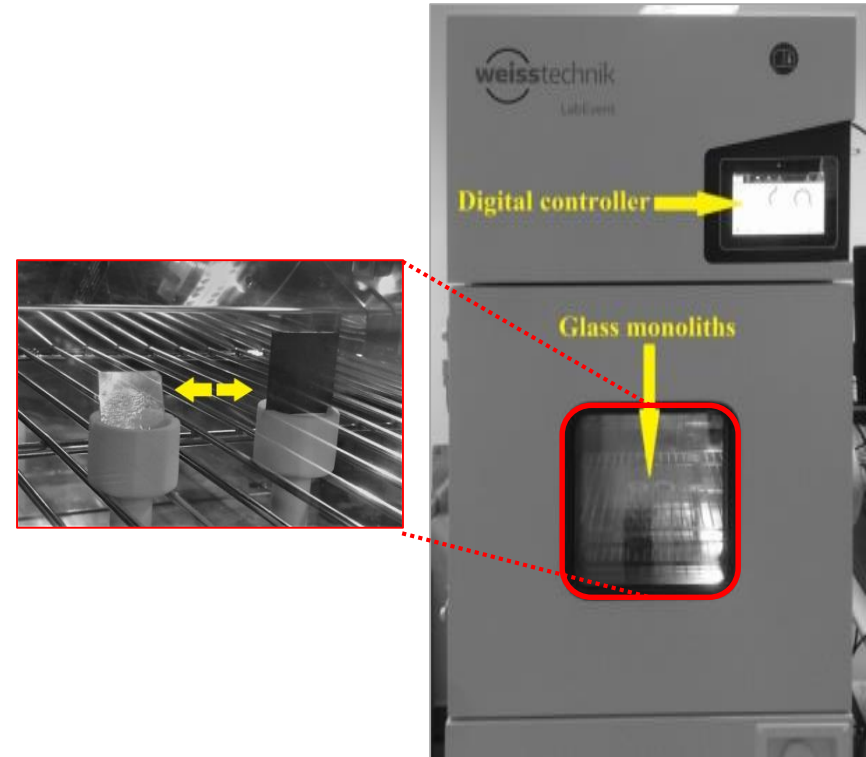


Glass composition- ISG (Chaoua et al.- 2014), SON68 (K M Davis et al.- 1996)

Autoclave (AC)



Climate Test Chamber (CC)



Autoclave figure- Chemical durability of Glasses (Abdelouas et al.- 2019)

Experimental conditions

	Glass	RH (%)	Temperature (°C)	Time of hydration (days)
Autoclave (AC)	SON68	99	125	112
			90	112
		95	90	47
				37
	ISG	99	125	112
			90	112
		95	90	47
				37
Climate Test Chamber (CC)	SON68	95	90	44
				37
	ISG			44
				37



Characterization Techniques

Characterization Techniques



SEM

- Determination of hydrated thickness



FTIR

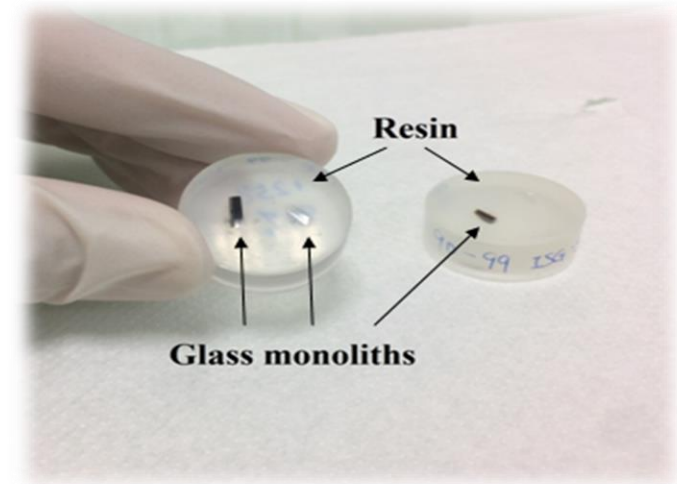
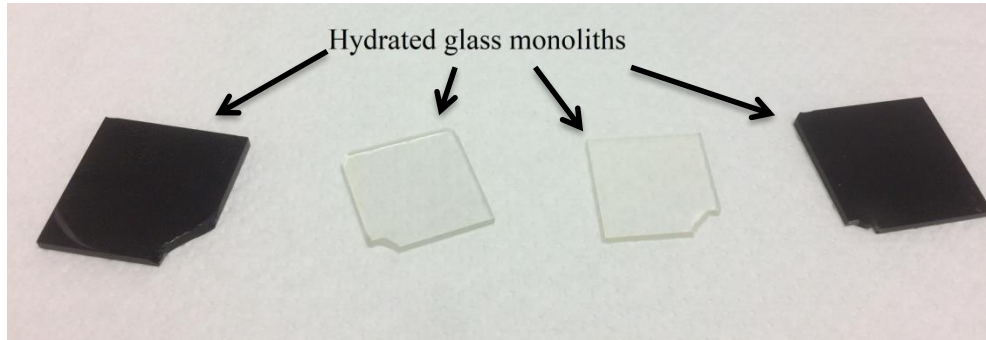
- To follow the glass hydration
- To determine the physical hydration thickness



ICP-MS

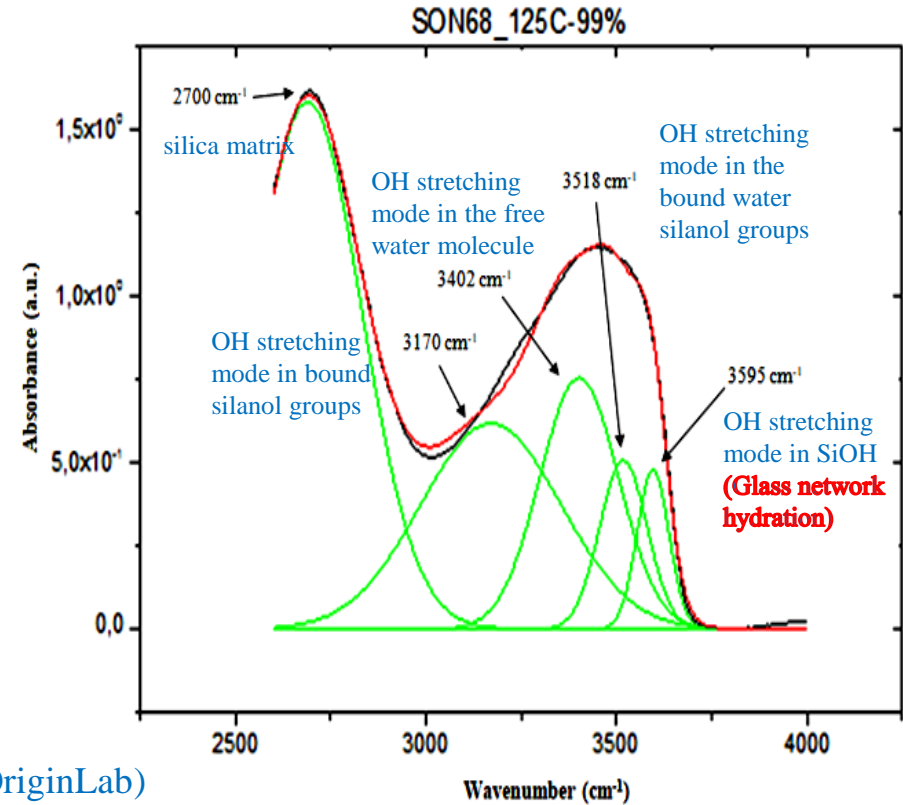
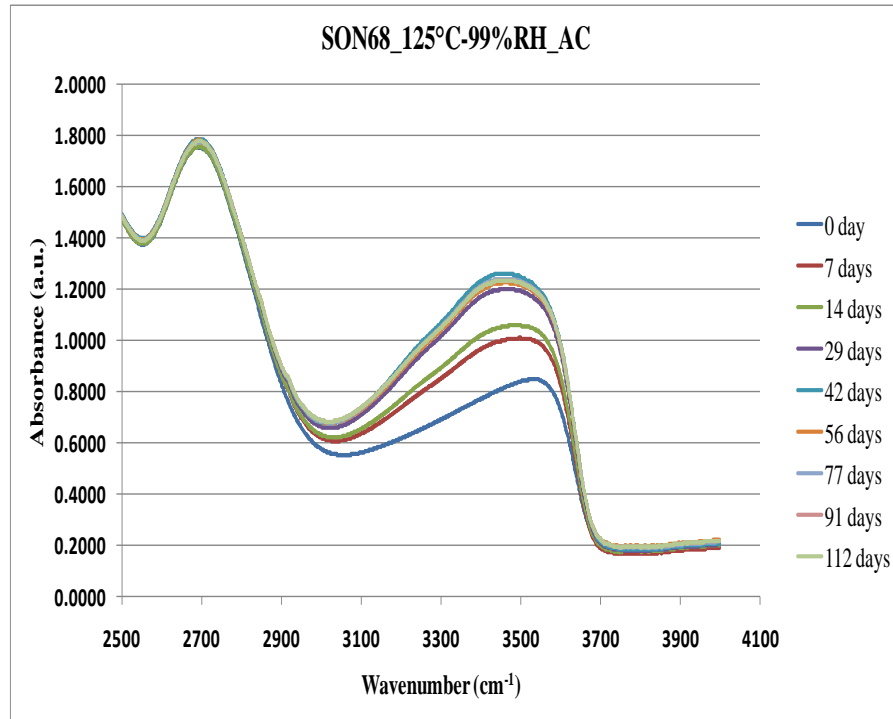
- Determination of chemical hydration thickness

Sample preparation for SEM analysis



SEM- Scanning Electron Microscopy

FTIR Spectroscopy



Deconvolution - five Gaussian using Origin 8.0 software (OriginLab)

H.Tomozawa, M.Tomozawa. Diffusion of water into a borosilicate glass

NL calculation

Boron

Normalized mass loss: $NL_i = \frac{NC_i}{(S/V)} = \frac{(C_i/X_i)}{(S/V)}$

NL_i - normalized mass loss (g/m²)

S - surface area of the sample (m²)

V - volume of solution (m³)

NC_i - normalized elemental concentration

C_i - concentration of the element i in the solution (g/m³)

X_i - weight fraction of element i in the glass

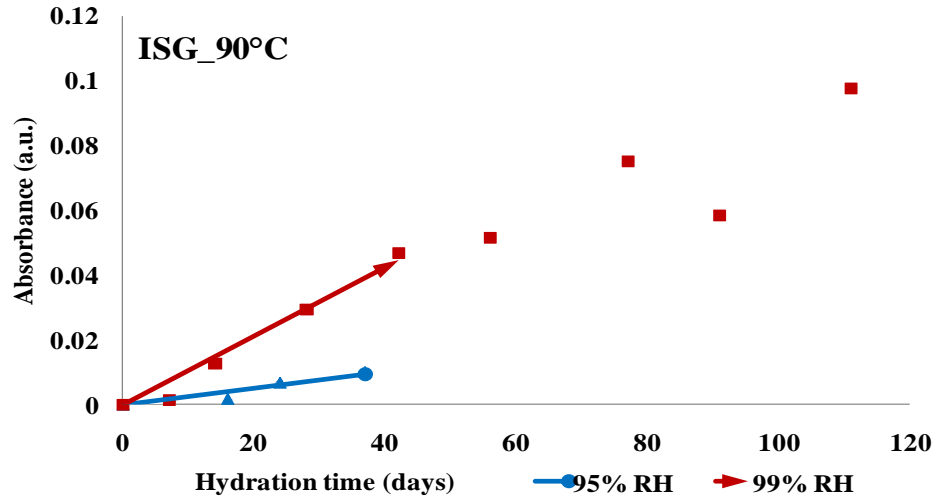
Equivalent thickness: $Eq_i = \frac{NL_i}{\rho_i}$

ρ_i is the glass density



Results & Discussion

Effect of relative humidity at 90°C

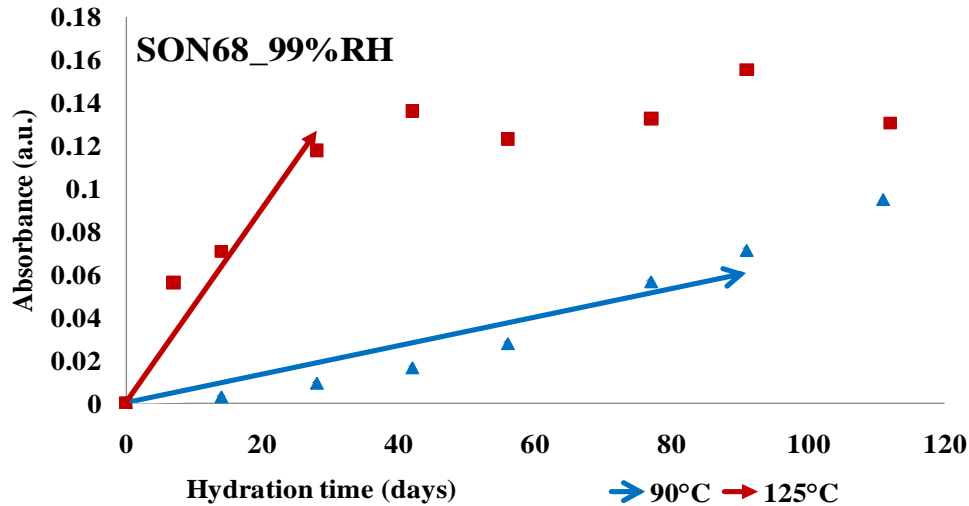


90°C	ISG glass
95% RH	2.6×10^{-4} per day
99% RH	9.8×10^{-4} per day
Factor	3.8

- Hydration rate increases with the RH increases
- The results consistent with the literature@

@ literature (Abdelouas et al.- 2013) (Neeway et al.- 2012) (Chaou et al.- 2017)

Effect of temperature at 99% RH

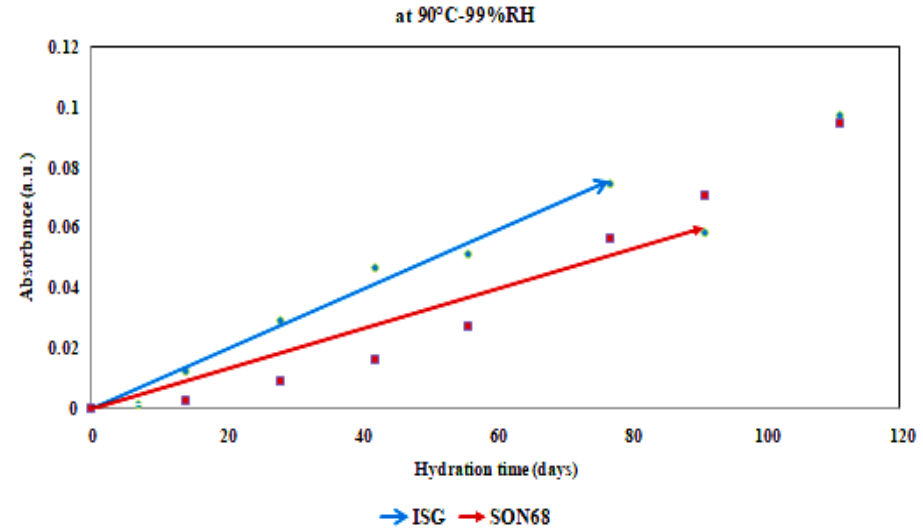
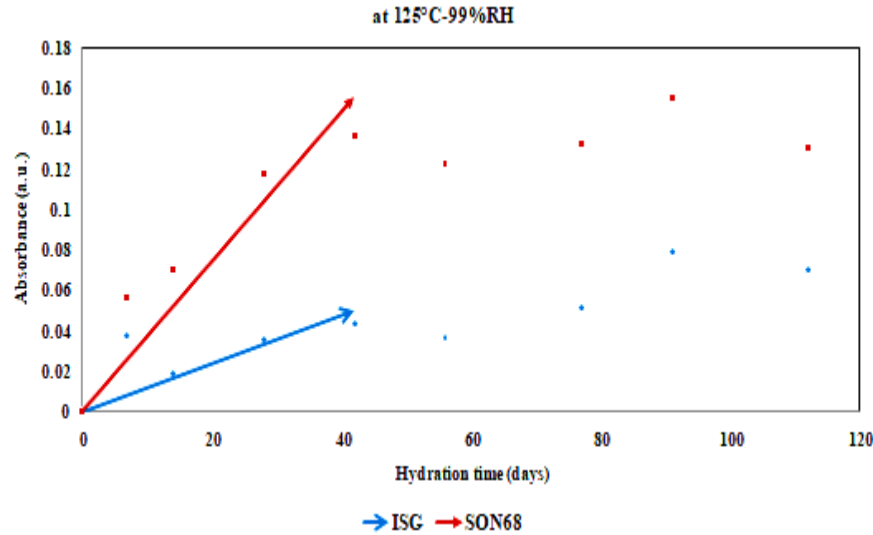


99% RH	SON68 glass
90°C	4.3×10^{-4} per day
125°C	45.0×10^{-4} per day
Factor	10.5

- Hydration rate increases with the Temperature increases
- The results consistent with the literature@

@ literature (Abdelouas et al.- 2013) (Neeway et al.- 2012) (Chaou et al.- 2017)

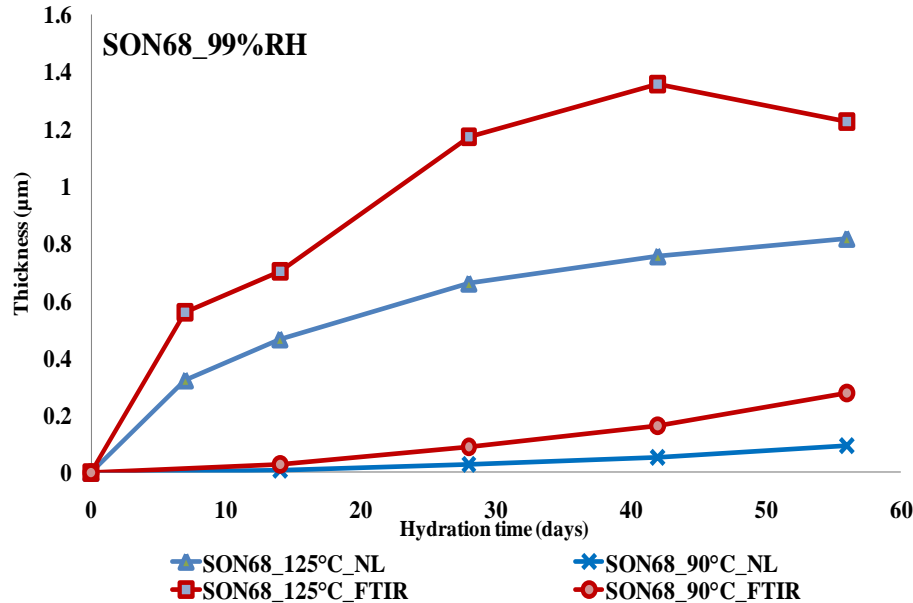
Effect of Glass Composition



	SON68 glass	ISG glass
At 125°C-99%RH	45.0×10^{-4} per day	12.0×10^{-4} per day
At 90°C-99%RH	4.3×10^{-4} per day	9.8×10^{-4} per day

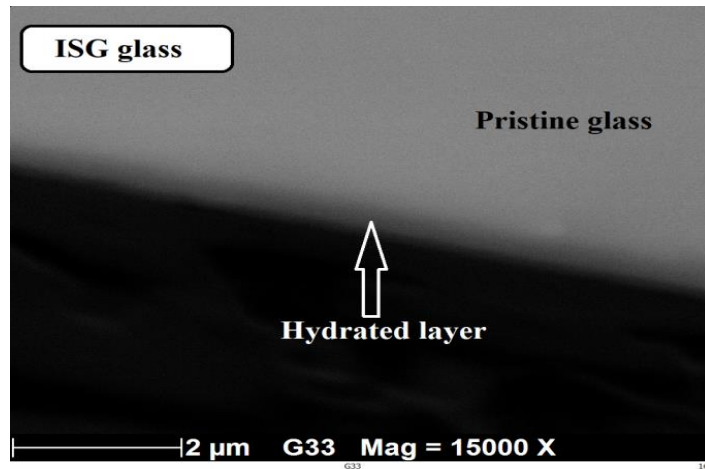
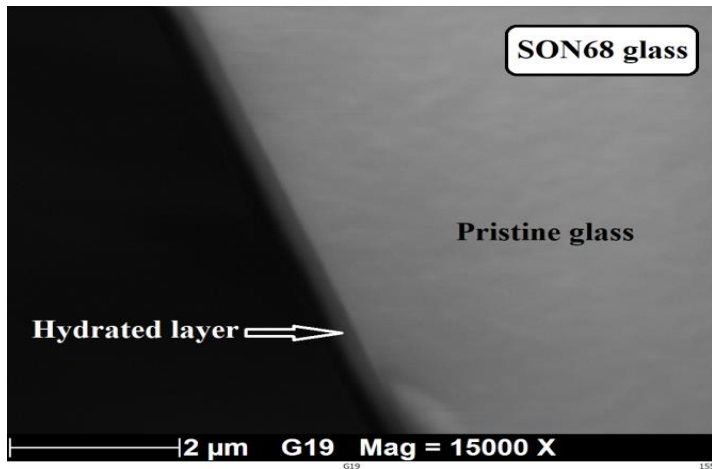
- The glass composition also affect the hydration rate

Physical & Chemical Thicknesses



- The physical thicknesses (FTIR) shows the maximum hydration.
- The difference between physical (FTIR) and chemical (NL) thicknesses is maybe boron were not released from hydrated layer to the solution.

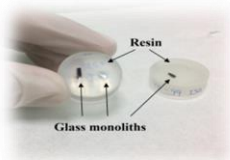
Surface analysis



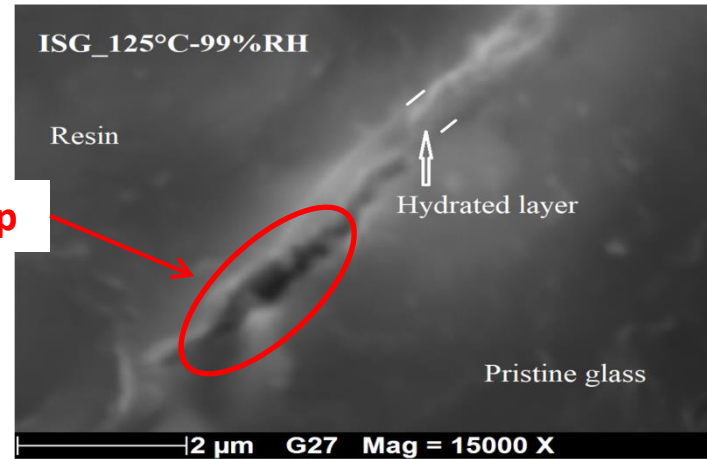
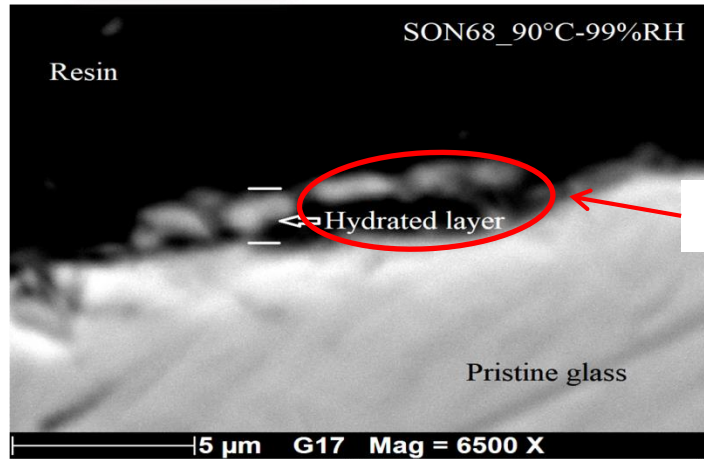
90°C-95%RH_CC	SON68 glass	ISG glass
SEM analysis	0.24 μm	0.37 μm

- Hydrated layer is not clearly visible in SEM images, not sure about the hydrated layer thickness

CC- Climate Test Chamber



Surface analysis (cont.)



gap

99% RH_AC	SON68 glass	ISG glass
SEM analysis	1.44 μm	0.69 μm
FTIR	1.10 μm	0.63 μm

- Found a gap between Resin and Glass sample

AC- Autoclave

Conclusion

- Correlation factor,
 - **ISG** 0.1 SiOH absorbance unit per 0.99 μm of hydrated layer (125°C-99%RH)
 - **SON68 glass** 0.1 SiOH absorbance unit per 1.5 μm of hydrated layer (90°C-99%RH)

Jeet PATEL (for ISG_125°C-99%RH)	Abdelouas et al. @ (for ISG_175°C-98%RH)	Jeet PATEL (for SON68_90°C-99%RH)	J. Neeway # (for SON68 glass)
0.1	0.11	0.07	0.09

- Verifying,
 - The hydration rate increasing with the RH and temperature increases

@ Primary Investigation of the ISG Glass Vapor Hydration (Abdelouas et al.- 2013), # Ph.D. thesis, University of Nantes (J. Neeway- 2010)

Acknowledgment

- Guillaume Blain (Subatech) for FTIR formation.
- Nicolas Stéphant from Centre of Micro-characterization, University of Nantes (France) for SEM analysis.



Thank you very much !

Special Thanks to

Prof. Abdesselam ABDELOUAS

Dr. Tomo SUZUKI-MURESAN

Ms. Haohan ZHANG

Jeet PATEL

Email: jeetpatel9409@gmail.com

LinkedIn: www.linkedin.com/in/jeet-patel-b70bbbb7

Mob.: +91-9408247952 (India)

