



AI4D Africa's Anglophone Multidisciplinary Research Lab

Ethical and Societal Challenges of Machine Learning

Dr. Jabhera Matogoro (PhD)

Jabhera.matogoro@a4dlab.or.tz

www.ai4dlab.or.tz

smr 3749 – 11 November 2022



Official Launching of AI4D Research Project



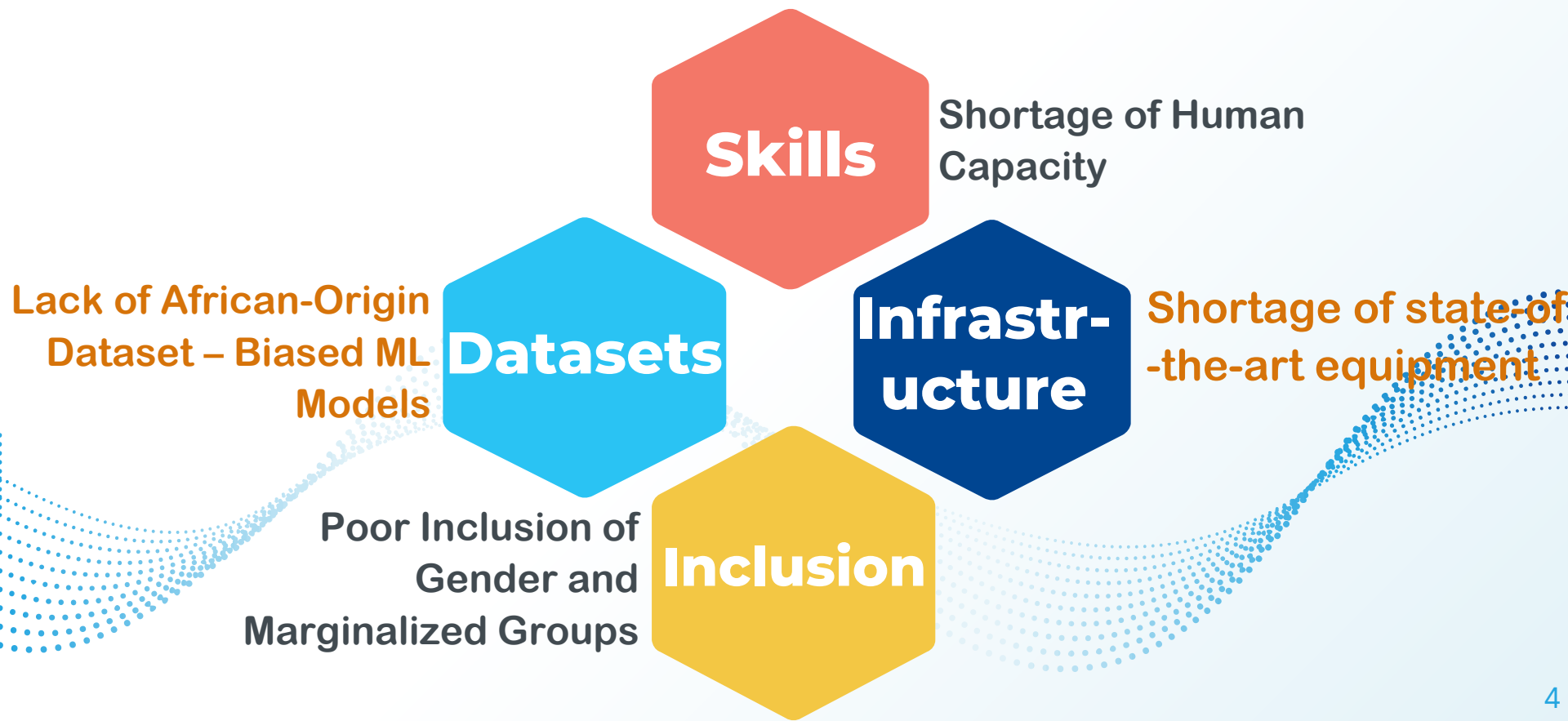
The screenshot displays the website of The University of Dodoma. At the top, there is a navigation bar with contact information (Call Us: [+255] 262160220, Email: info@uodom.ac.tz) and various menu items like Staff, Library, Contact Us, Downloads, Newsletter, Prospectus, Academic Staff Promotion, UDOM Repository, E-Learning, and UDOM SR. The main header features the university's logo and name. Below the header, a navigation menu includes links for ABOUT US, COLLEGES, ADMISSION RESULTS 2021/2022, DIRECTORATES, RESEARCH, TIMETABLE 2021/2022, ICT SERVICES, and CAMPUS LIFE. The central focus is a large blue banner with the text: "UDOM UPDATES", "Official Launching of the Project to Establish AI4D Africa's Anglophone Multidisciplinary Research Lab", and "Date: 24th Jan 2022 | Venue: UDOM CIVE BOARD ROOM". To the right of the text is a video player showing a man in a suit speaking at a podium. The browser's address bar shows "https://www.uodom.ac.tz" and the Windows taskbar at the bottom indicates the date as 31/01/2022 and the time as 18:29.

AI4D LAB

The consortium of the University of Dodoma (UDOM) and the Nelson Mandela African Institution of Science and Technology (NM-AIST).



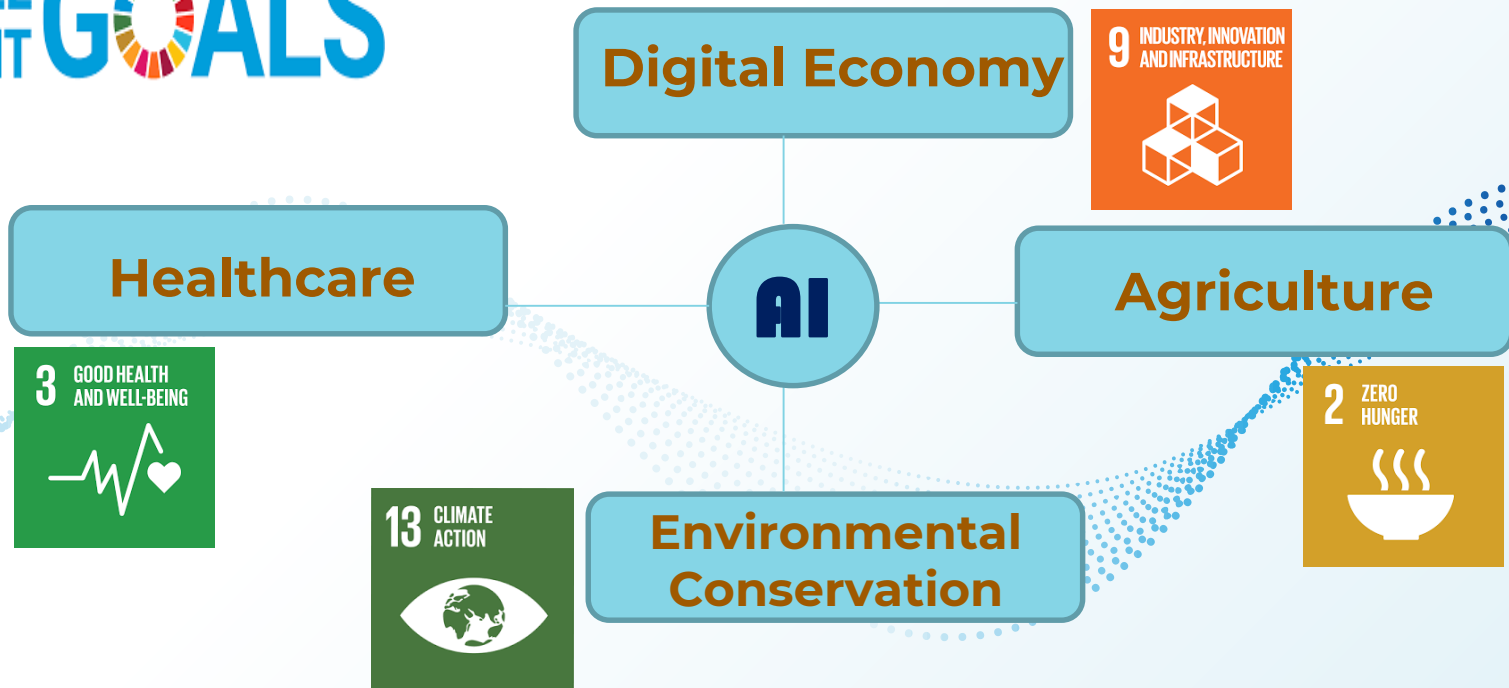
Challenges



Research Priorities

Accelerating

SUSTAINABLE DEVELOPMENT GOALS



Research Priorities

Infrastructure, & AI-ready Dataset Contribution

- Infrastructure to support AI training, research, and Innovation.
- Contributing to Africa-Origin Datasets.

Healthcare & Digital Economy

Small and Medium Scale Industries

- Applying AI for improved diagnosis in diseases, treatment and drug development.
- Accelerating digitization and automation of African industries.

Environmental conservation and Agriculture

- Exploiting the use of AI for environmental conservation and biodiversity monitoring
- AI for climate crisis management.

Towards Responsible AI

Contributing to Africa-Origin Datasets

Addressing the issue of biasness when training ML models that could consequently lead to biased decisions.

Reproducibility

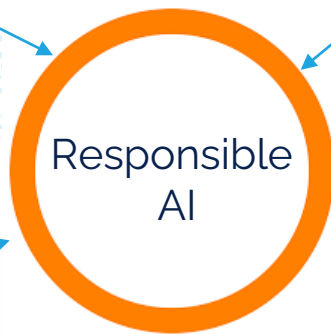
Emphasizing transparency and code sharing.

Ensuring Inclusiveness

Gender and Marginalized groups inclusion.

Data Sharing and Protection Policy

Compliance to rules and regulations governing data sharing and protection.



Trustworthy AI

Developing standards for trustworthy AI.

From Principles to Practice

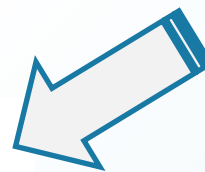
TECHNICAL

Co-analysis and Co-design
of AI systems



OPERATIONAL

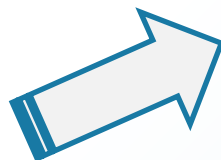
Conducive environment that
fosters AI uptake



Responsible
AI

ORGANIZATIONAL

Raising issues and
concerns with AI systems



Collaboration:

A way to realize the benefits of AI and DS

Who do we
collaborate with!



Thanks!



ARTIFICIAL
INTELLIGENCE
FOR
DEVELOPMENT
AFRICA



IDRC · CRDI



Sida

