

Emilia-Romagna

Giulia Villani

gvillani@arpa.emr.it

Trieste, 4th December 2013

ICTP, CLIMRUN winter school 2-6 December 2013



KEY FACTS

Location: North-East
Capital: Bologna
Provinces: Bologna, Ferrara, Forlì-Cesena, Modena, Parma, Piacenza, Ravenna, Reggio Emilia, Rimini

Population: 4,1 millions
Unemployment rate: 4%

GDP: 115 billion Euro
GDP per capita: 28.000 Euro
Export (value): 40 billion Euro

ENTERPRISES

Total: 420.000
< 20 employees: 97%
Manufacturing: 67.000
Manufacturing EXP: 13% on national EXP.
(ranks 2nd in Italy)

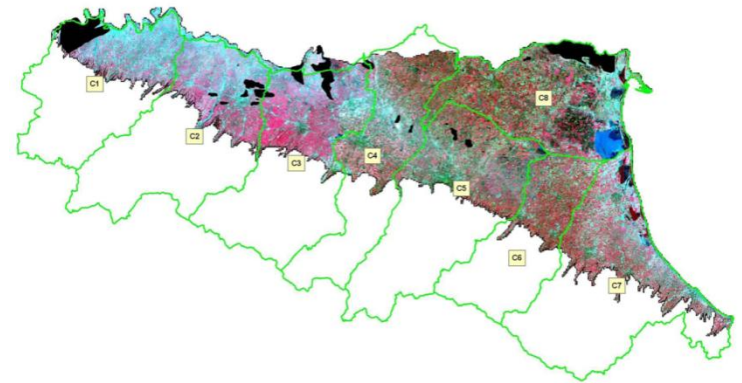
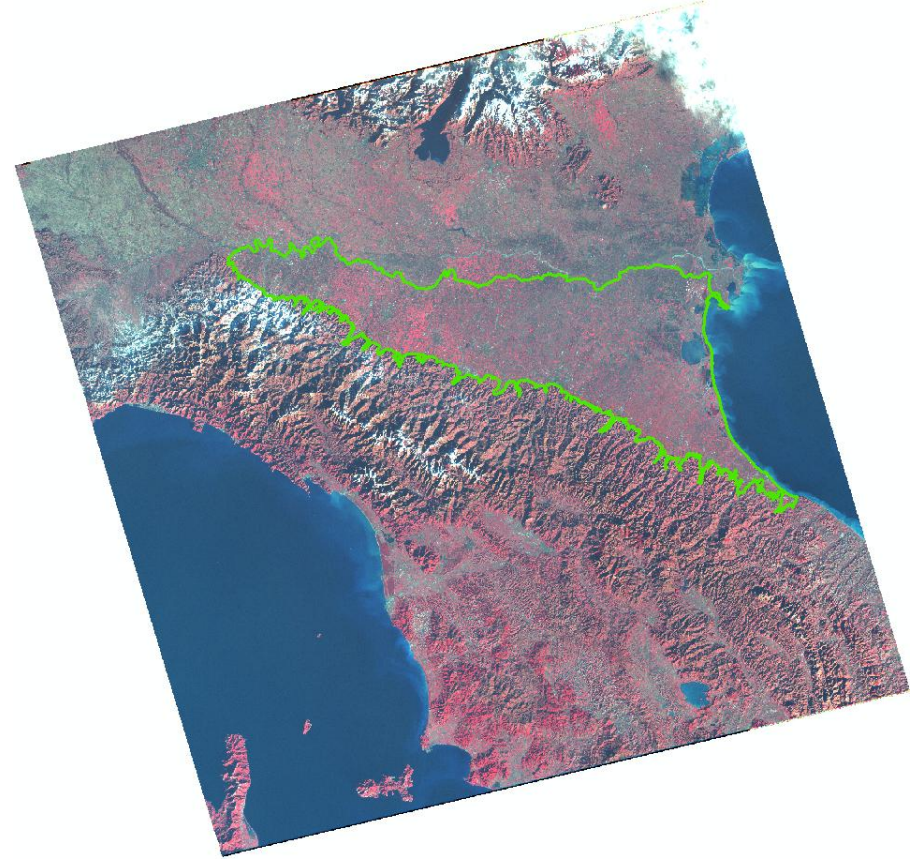


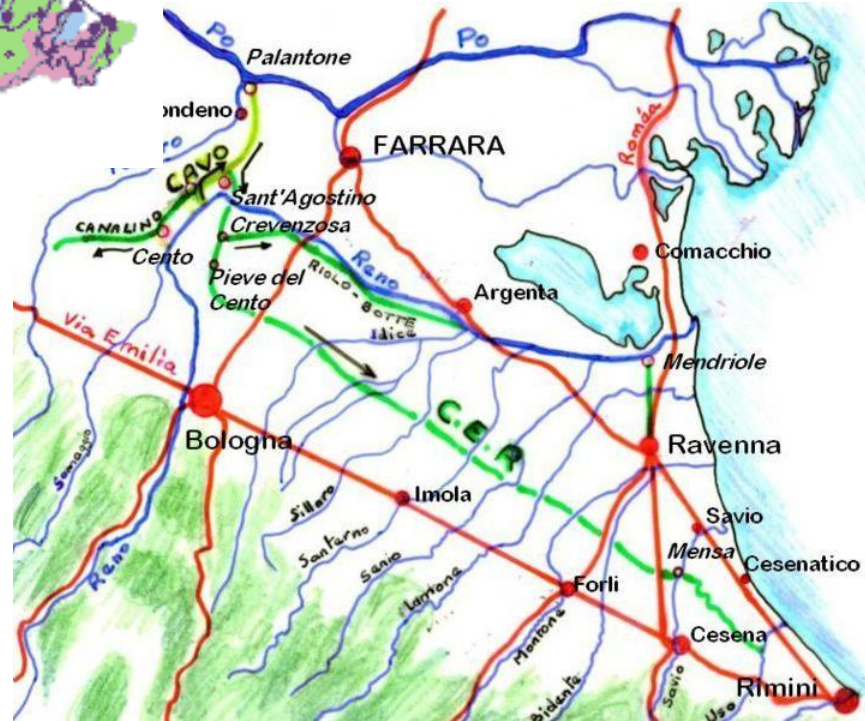
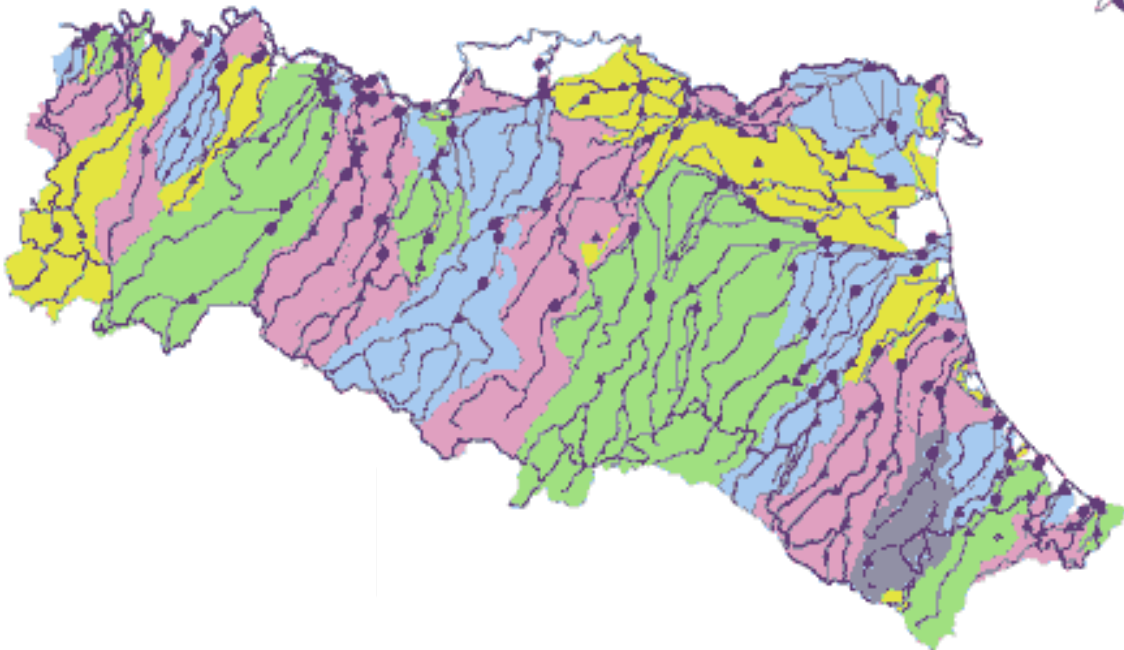


Emilia-romagna

description

The Region is located in Northern Italy and half of its land is in the Po and Reno river plain. It is characterized by intense agricultural activities and urban development . The plain area covers 1.000.000 ha. About 75% is agricultural lands and it's characterized by wheat, maize, sugar beets, alfalfa, vineyards and orchards (pear, peach and apple).



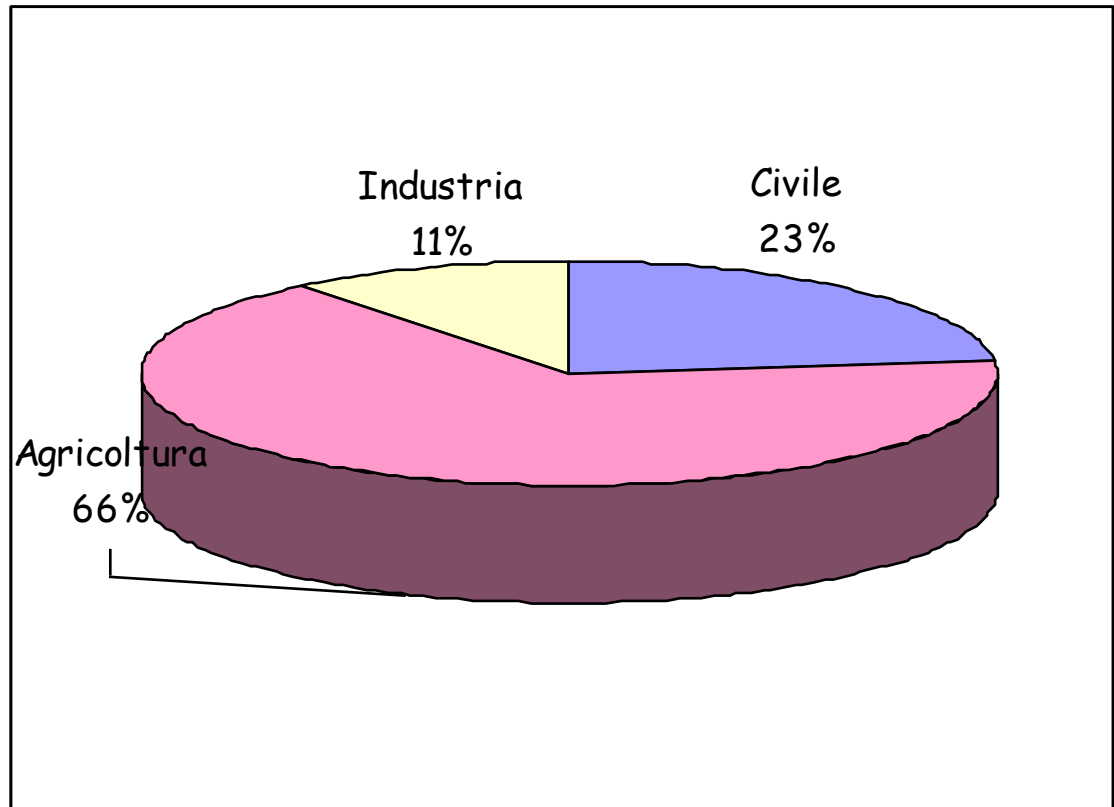


Water withdrawals in Emilia-Romagna

• **Agriculture:** 1425 Mm³/y (66% of the total amount) about 900 Mm³/y from the Po river

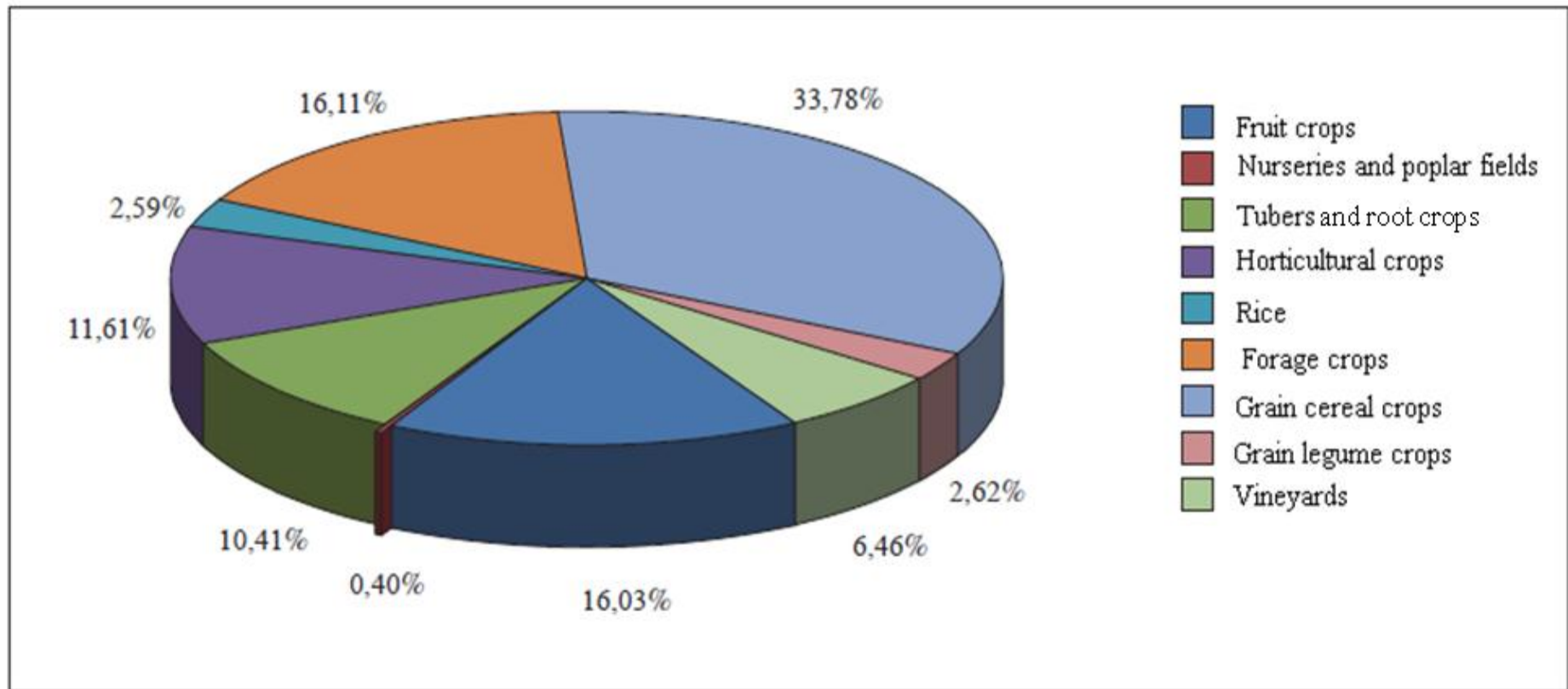
• **Civil use:** 487 Mm³/y (23% of the total amount);

• **Industry:** 233 Mm³/y (11% of the total amount).

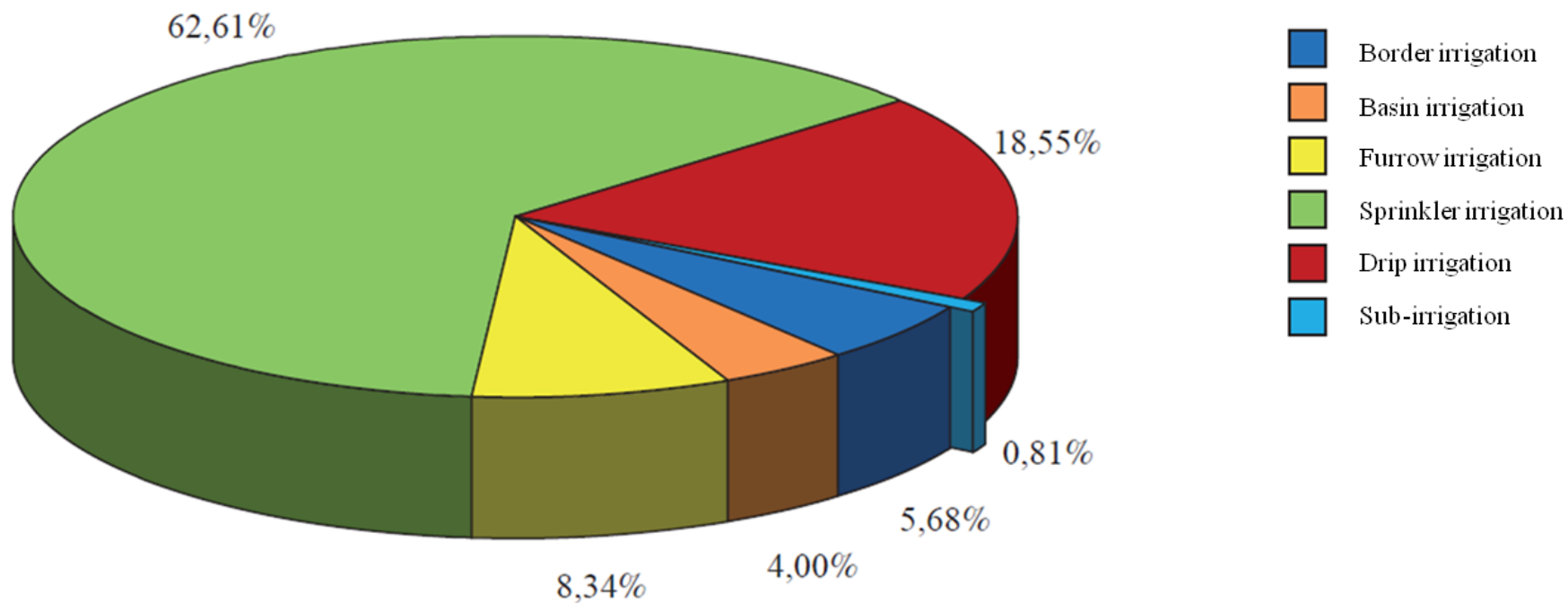


• **Total withdrawal: 2131 Mm³/y**

Irrigated crops in Emilia-Romagna



Irrigation methods



Water management in Emilia-Romagna

- The hydraulic safety is guaranteed by the activity of Reclamation Consortia (8 in the region), that have also the task to keep the network , the maintenance and the strengthening of the plants. Moreover, Consortia have a key role in the hilly and mountain areas with works of agro-forestry installation to avoid erosion and hidro geological risks.
- Whereas the Emilia-Romagna Region, by means of the technical service of basins, ensure the hydraulic safety of rivers and AIPO (Interregional agency for the River Po) ensures the safety of Po river.



Main issues linked to the irrigation

In the regional area, some problems linked to water sources are coming up, such as the water quality, that are worse than the national standards. The organic pollution of surface water in Emilia-Romagna, although decreasing, is higher than the European countries, while in the vulnerable areas, as defined by the Nitrates Directive (pollution by agricultural nitrates) are widespread in the plain and are extended on the 28% of the regional territory. Further problems are subsidence, enhanced by groundwater withdrawals and the soil salinization, especially in coastal areas. In the recent past years (especially 2003, 2006, 2007, 2011, 2012), drought and water scarcity became crucial problems that the Region is facing on the main water bodies, mainly on the Po.

