

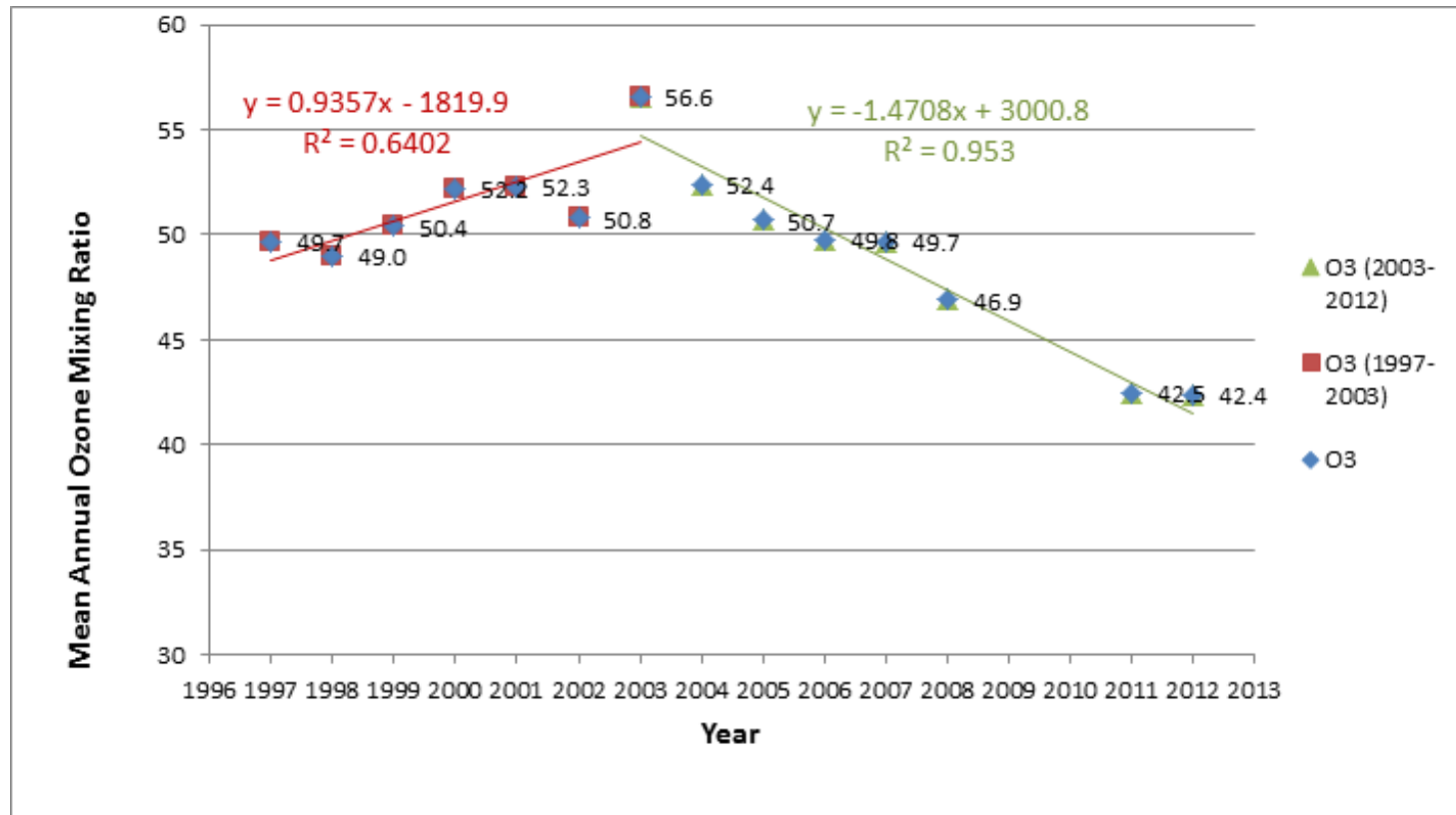
Giordan Lighthouse in Central Mediterranean; Lat: 36° 4' 24", Long: 14° 13' 9".



Instruments available:

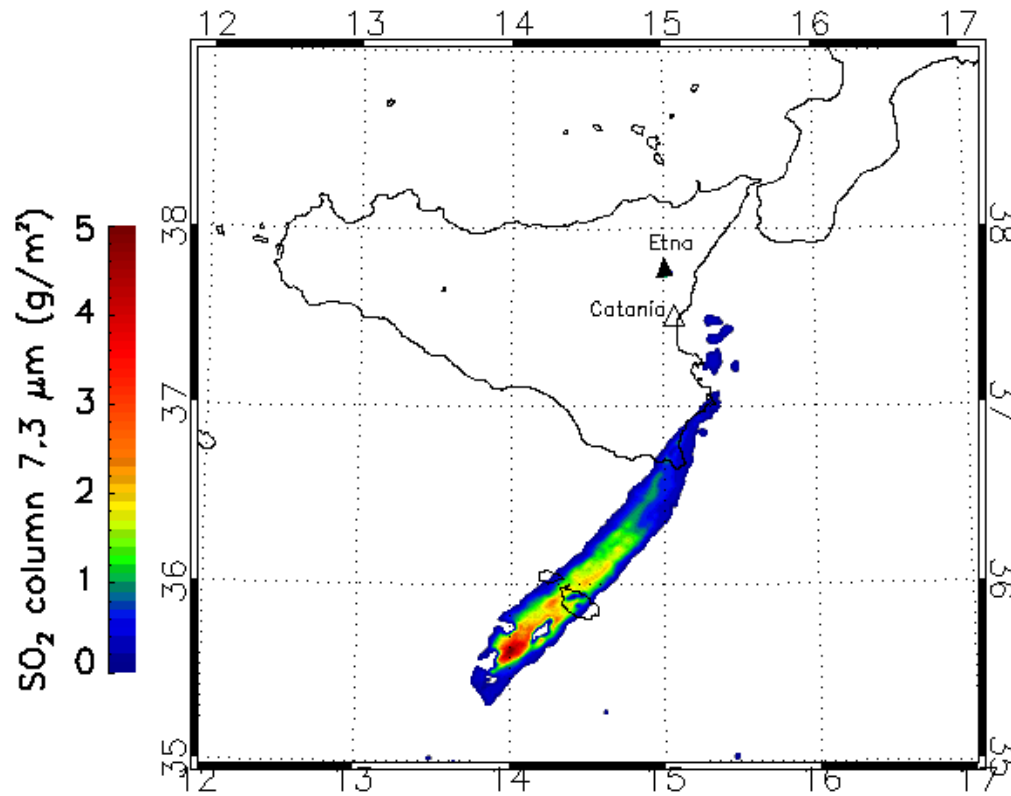
Ozone monitor, Ozone primary standard from LUBW, CO monitor, SO₂ monitor, NO_x monitor, Greenhouse gases Picarro monitor for CO, CO₂, H₂O, CH₄, AE 33 Aethalometer from McGee, Aerosol system including MAAP, OPC, CPC, SMPS from Leipzig, Two low volume samplers, Calibration gases system for above trace gases monitors, Radon-222 detector, Gravimetric facility for use with LVS. Cimel Sunphotometer for AOD (Aeronet network), Various passive photometers, Campbell laser Present Weather Sensor, Meteorological sensors.

Ozone concentrations from 1997 to 2012



13th January 2011; SO₂ emissions from Etna

2011 13 01 01:17



AIRS SO₂ images (processed by F. Prata)

Ship (SO₂) emissions for 2011; used FMI model with ships' AIS data.

