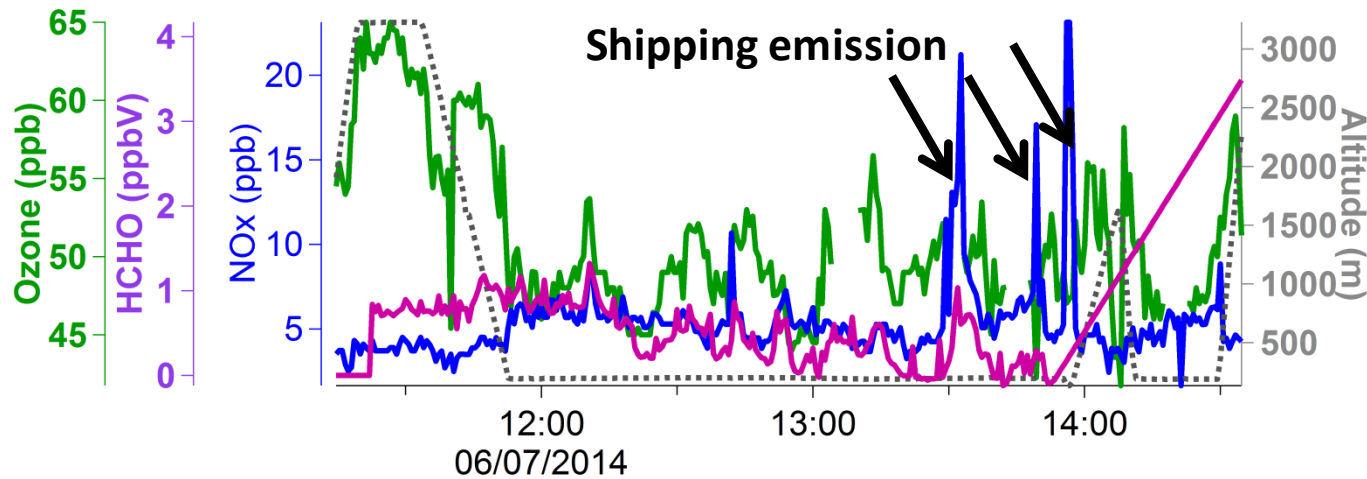
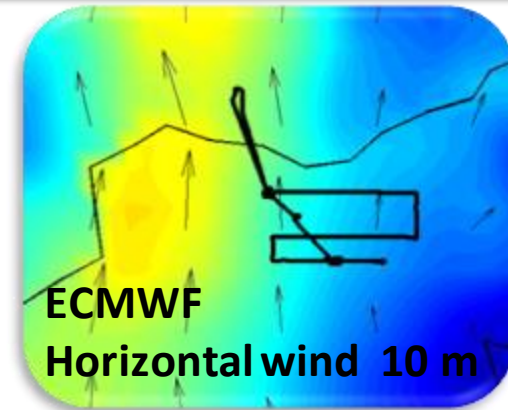
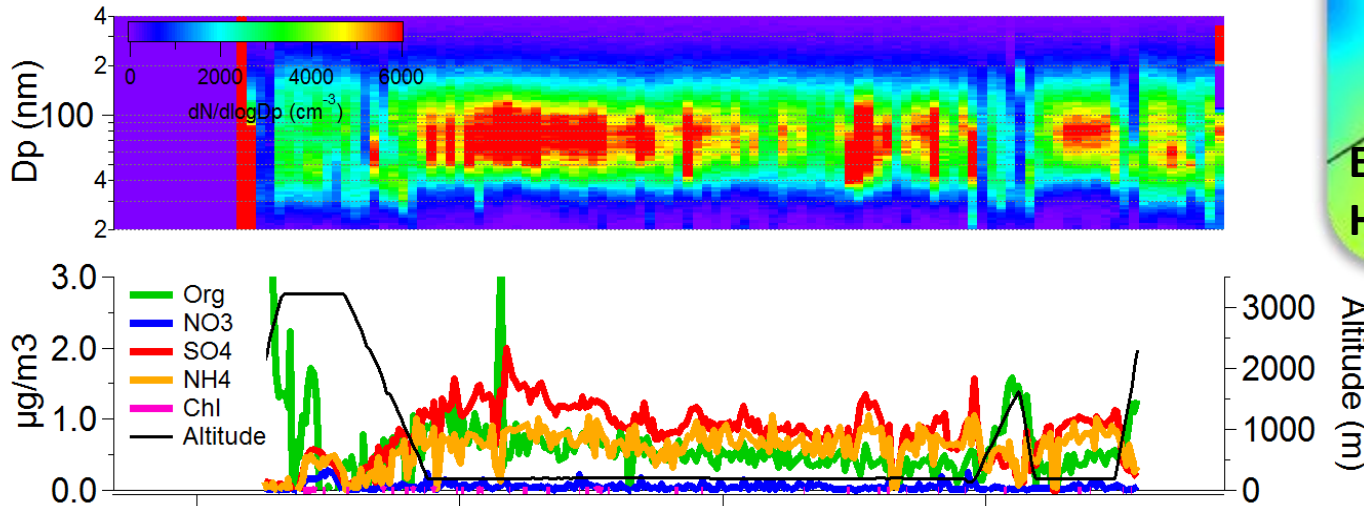
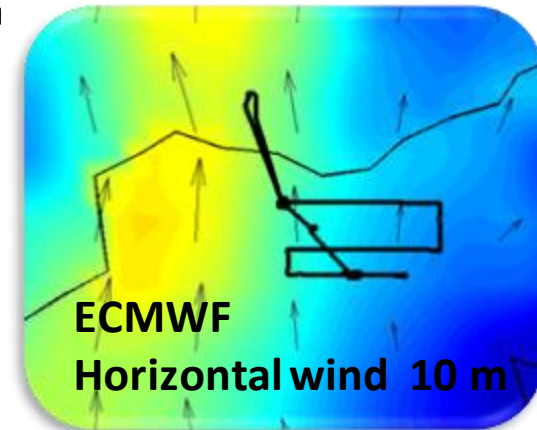
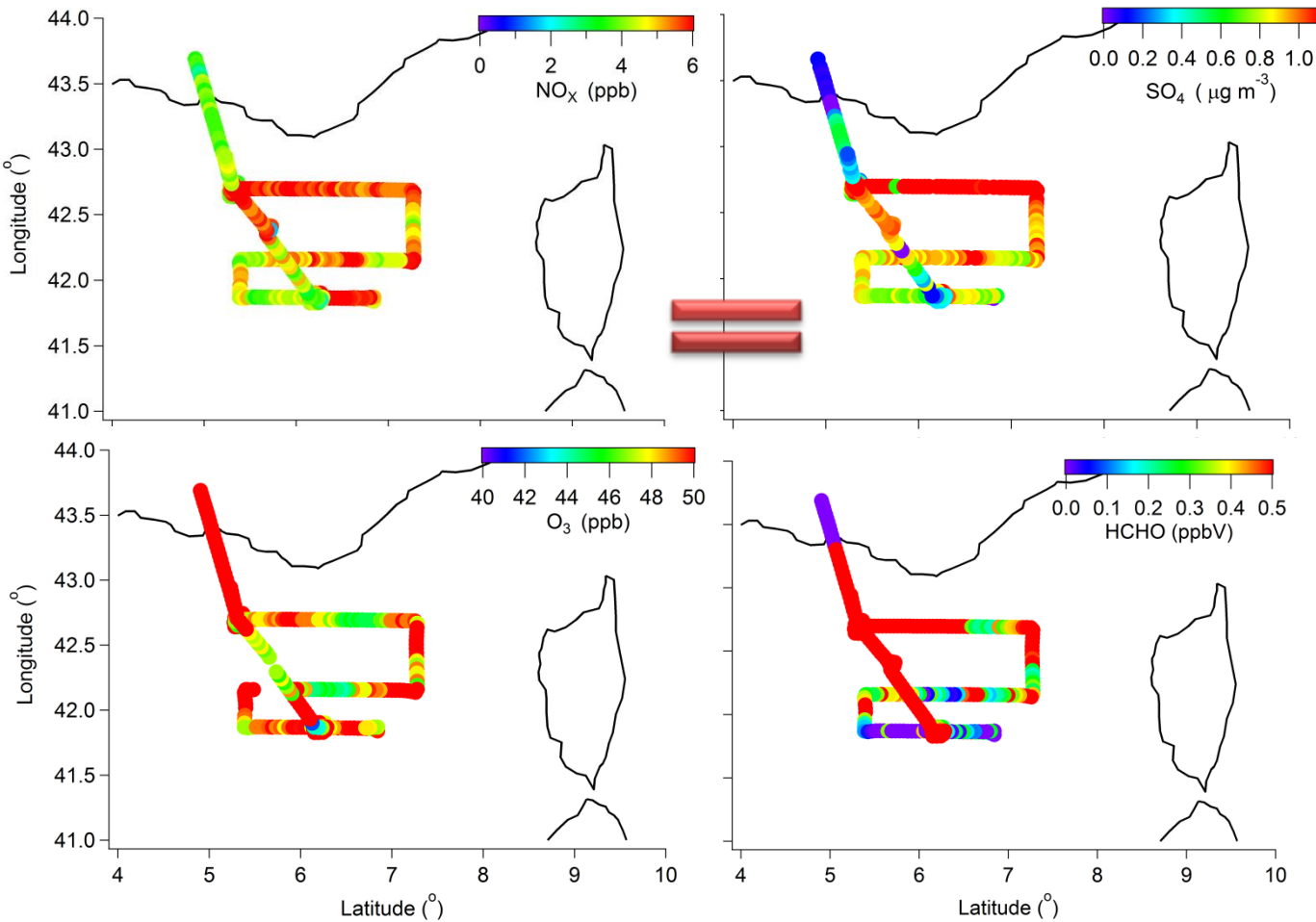
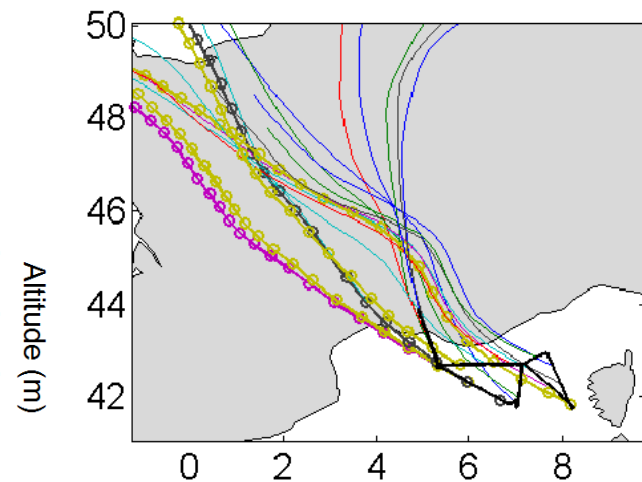
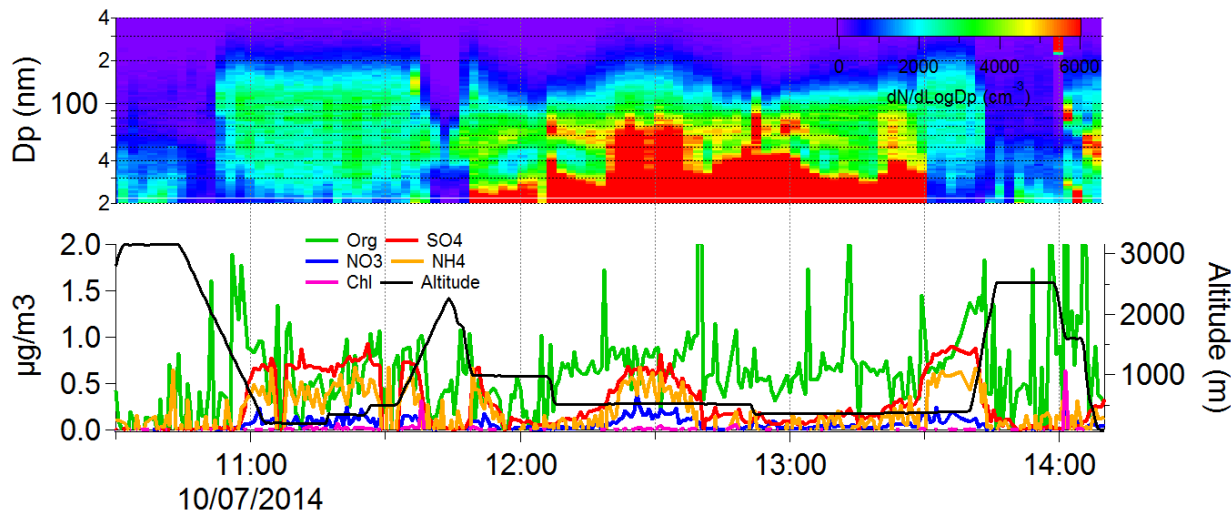
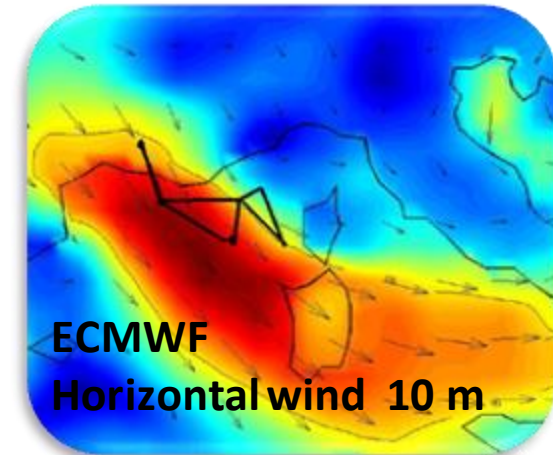
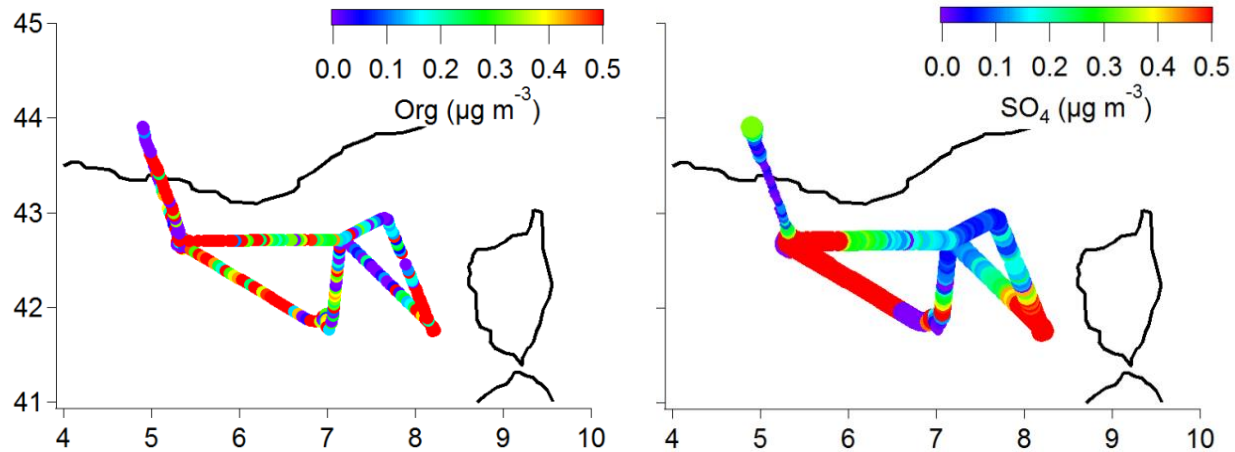
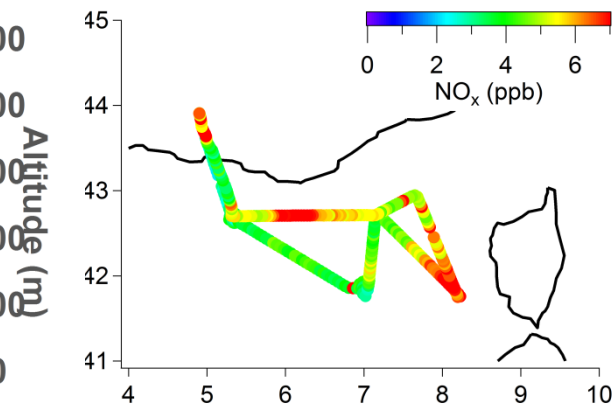
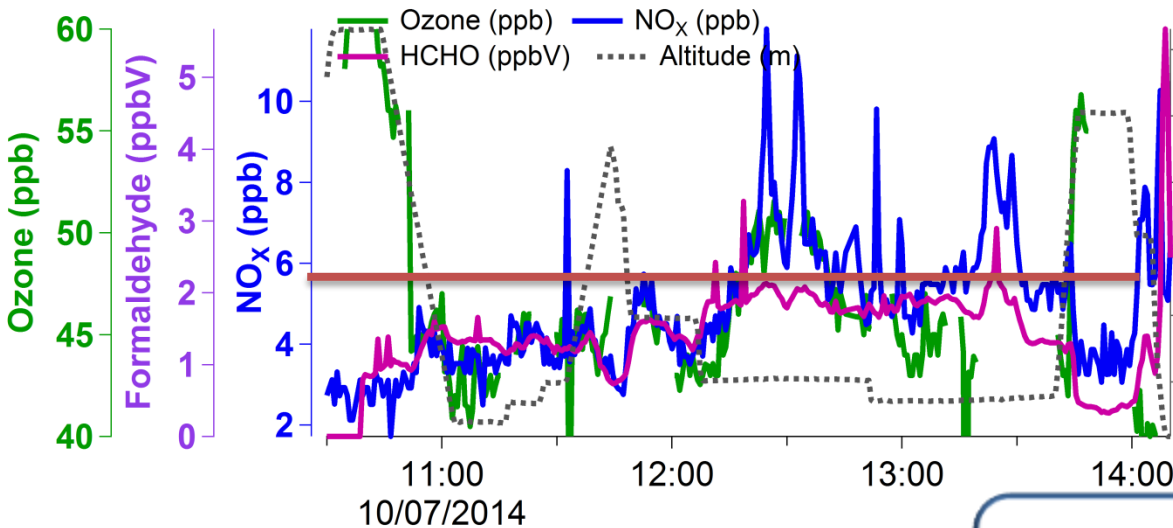
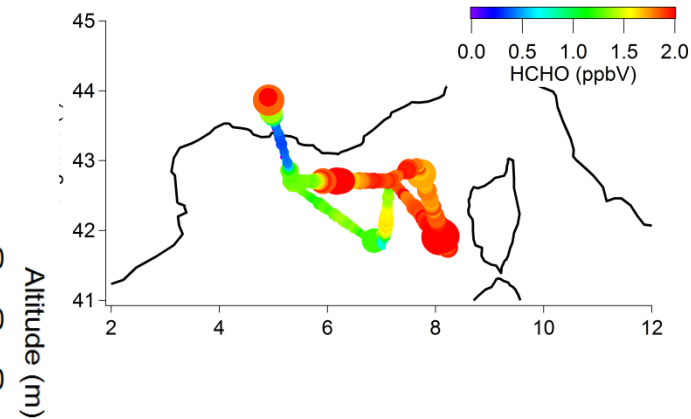
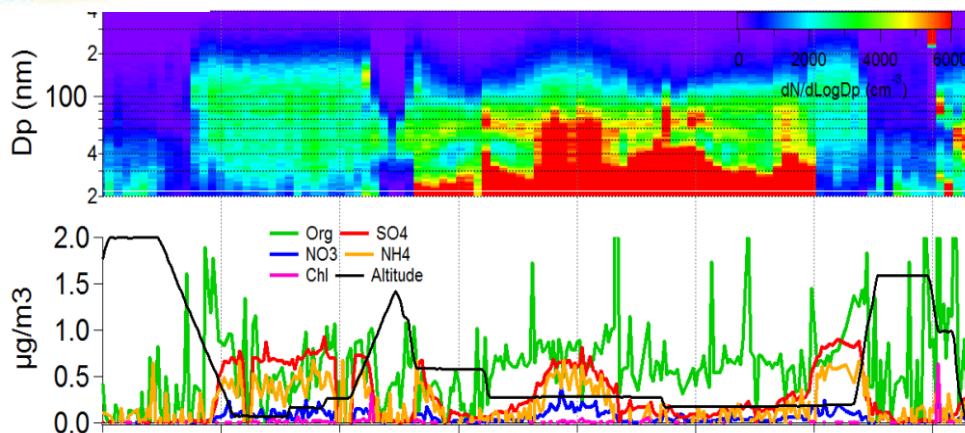


**LaMP**  
**LISA**  
**CNRM**  
**SAFIRE**







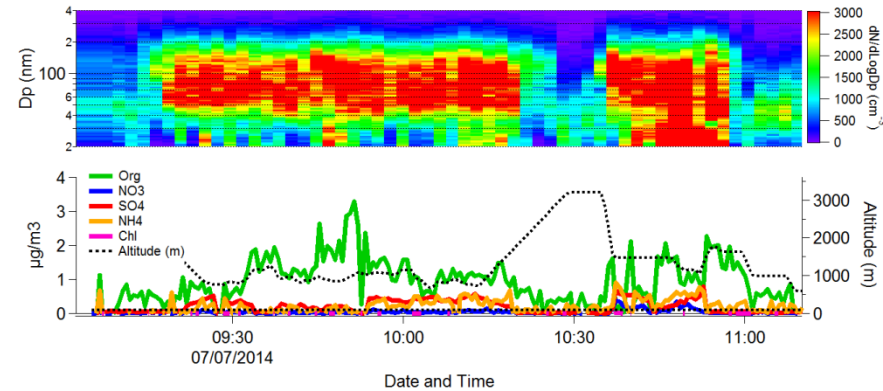
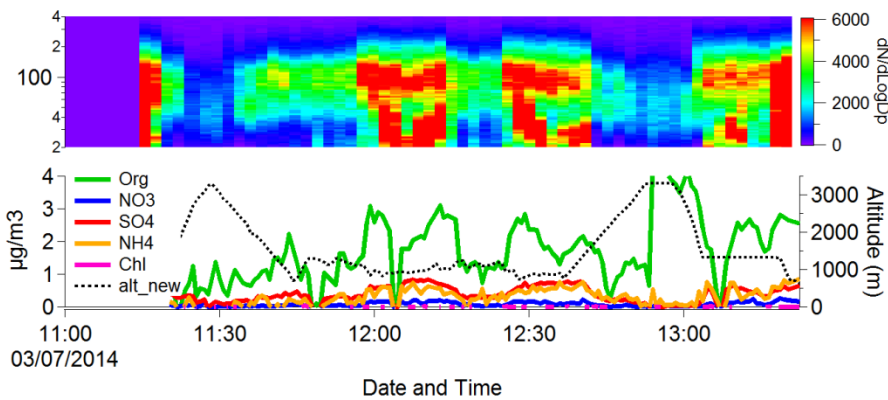
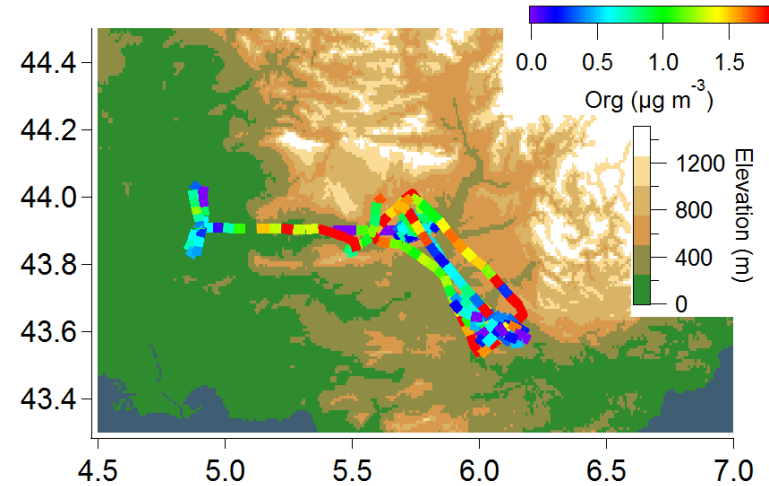
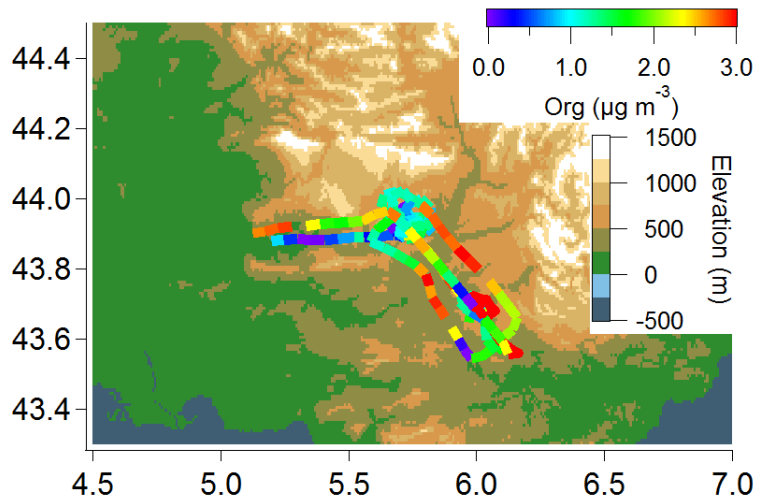


## Prospectives:

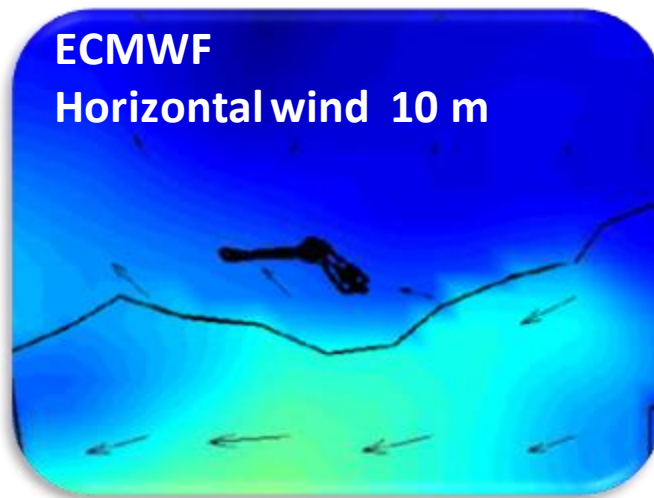
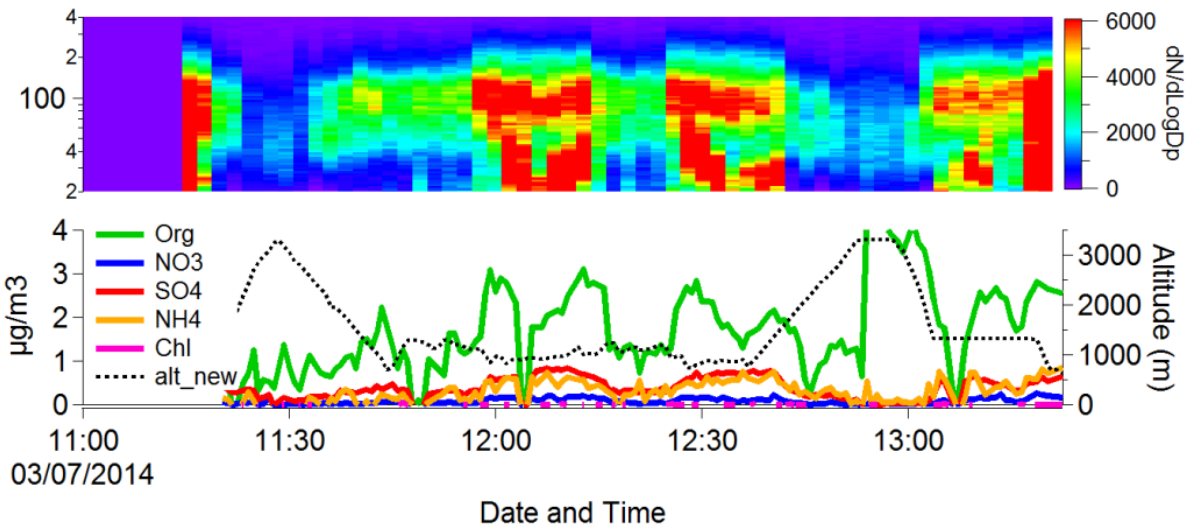
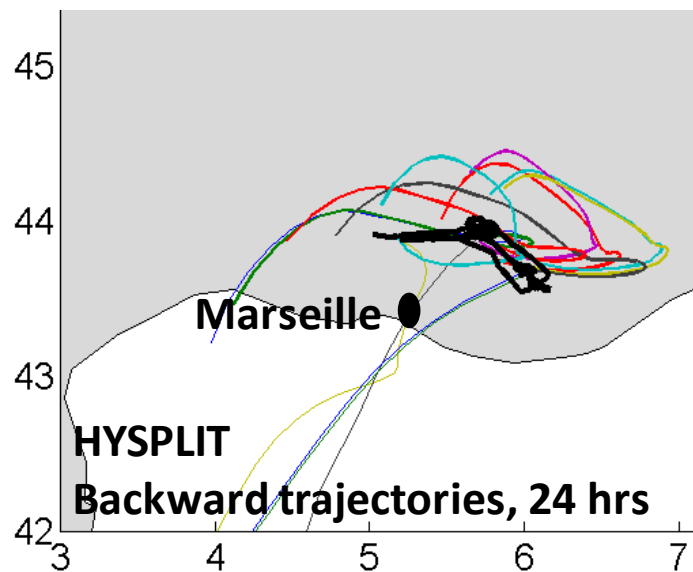
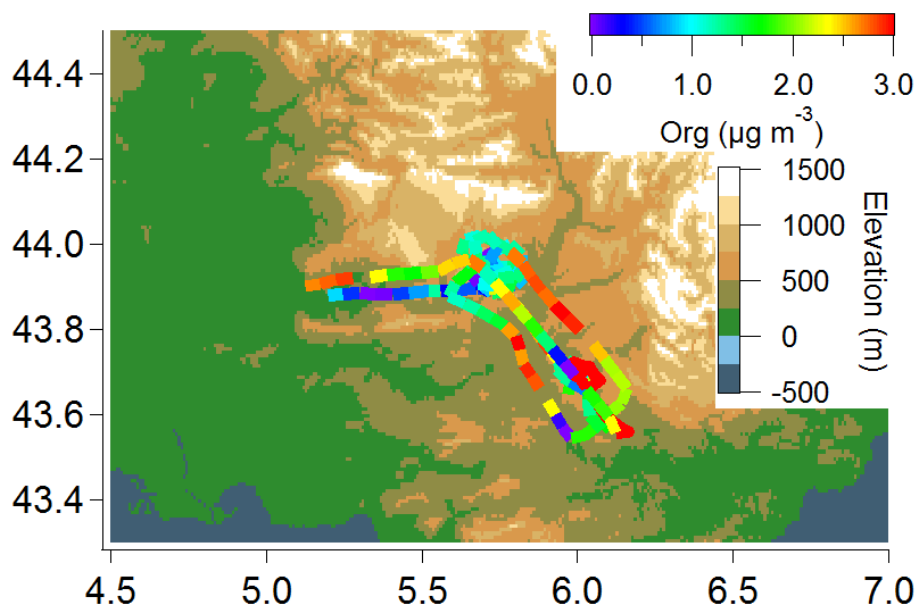
Source apportionment of organic aerosol  
Coupling AMS+PTRMS measurements

# Biogenic emissions 2 to 4 flights

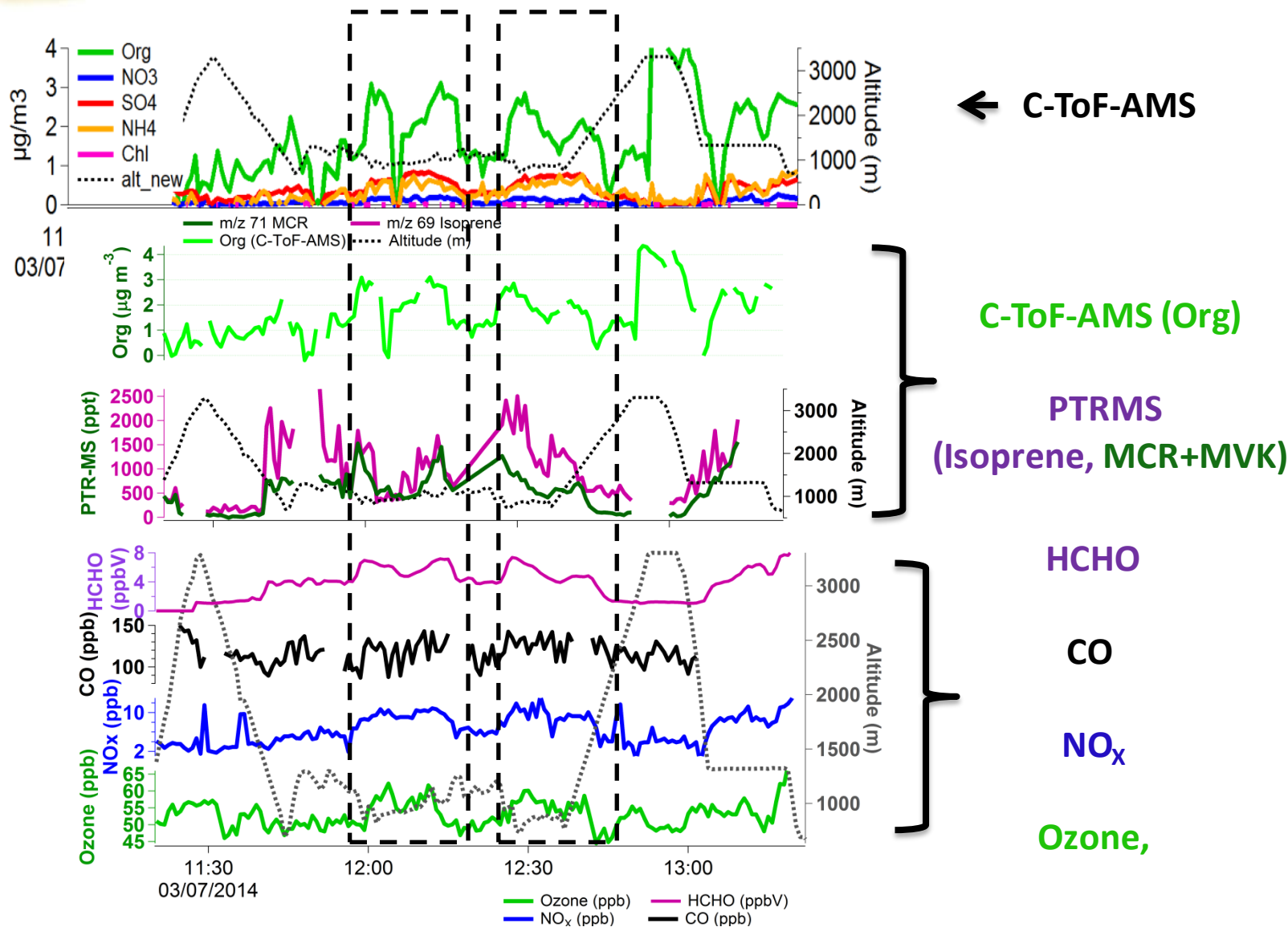
## Forest dominated by isoprene emissions



# Biogenic emissions (SAFMED+) 2 to 4 flights Forest dominated by isoprene emissions

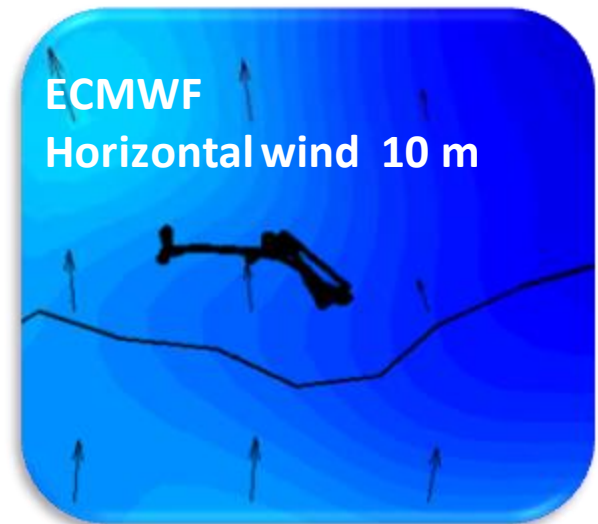
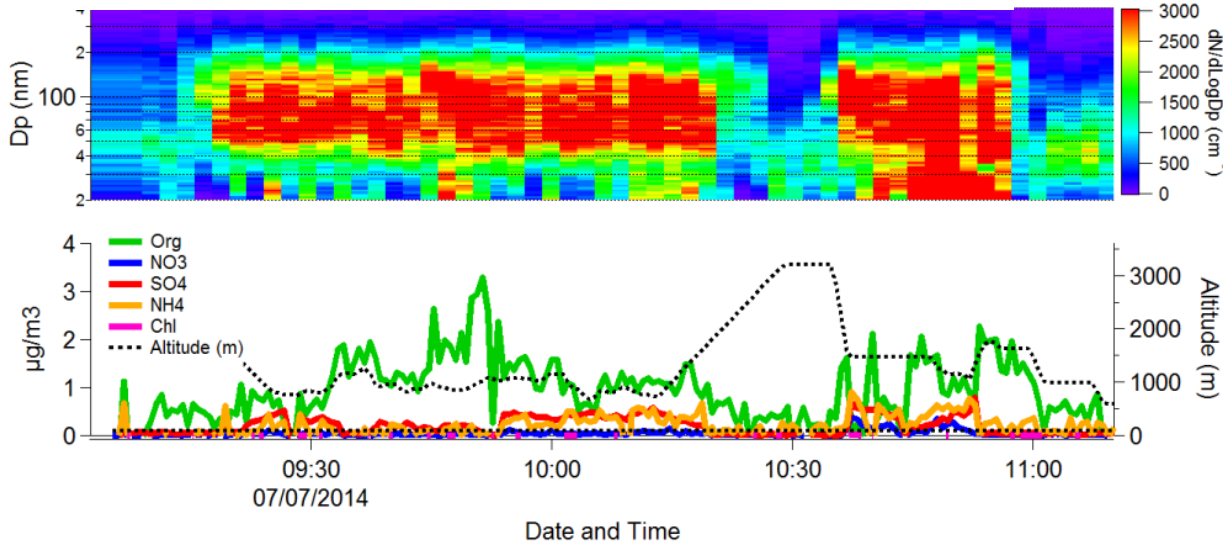
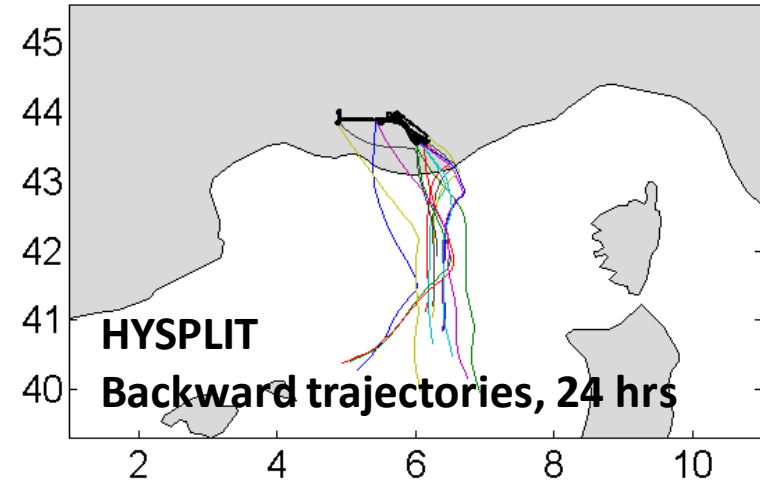
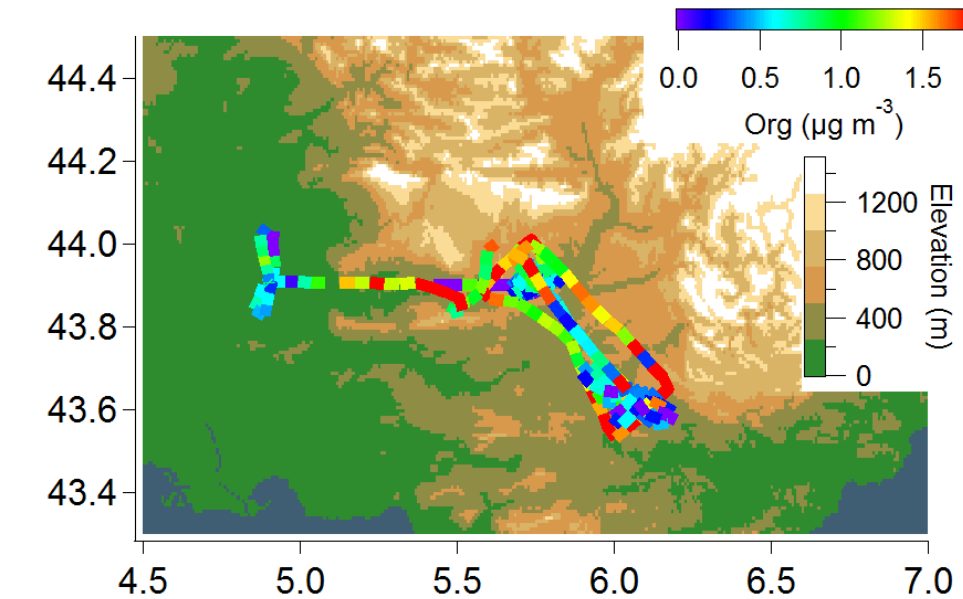


# Biogenic emissions (SAFMED+) 2 to 4 flights Forest dominated by isoprene emissions

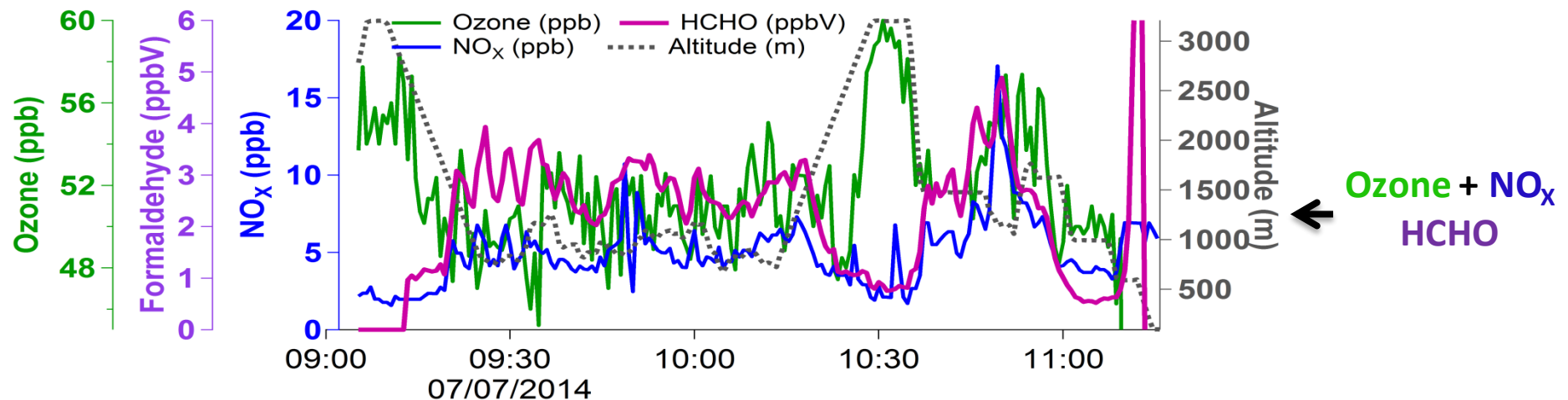
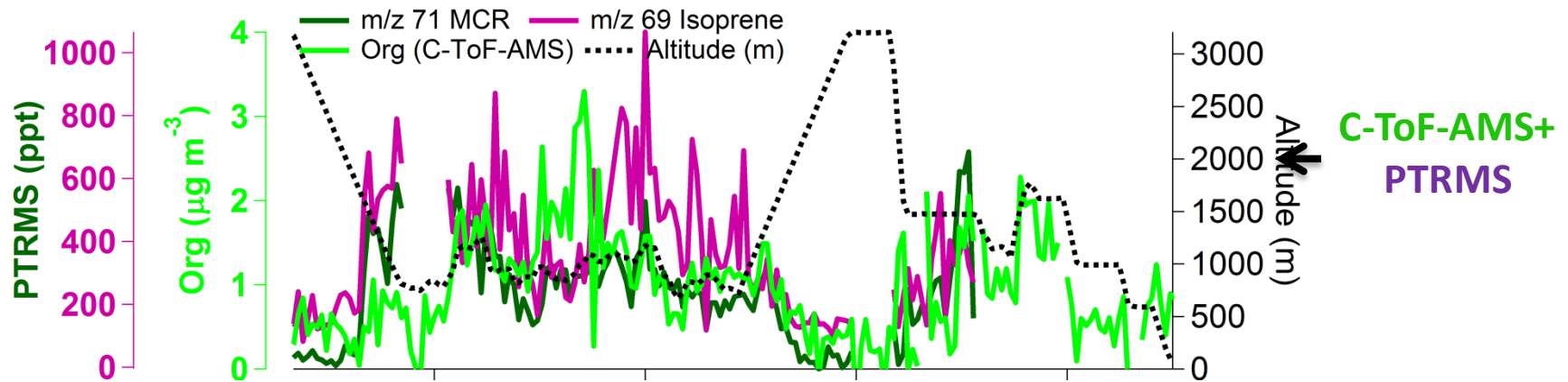
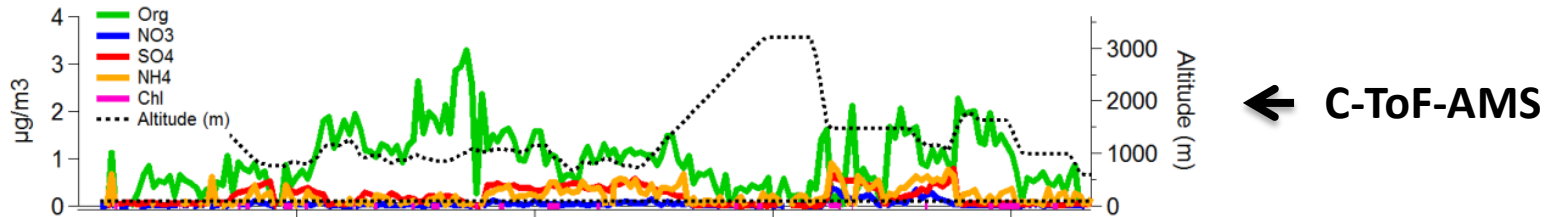




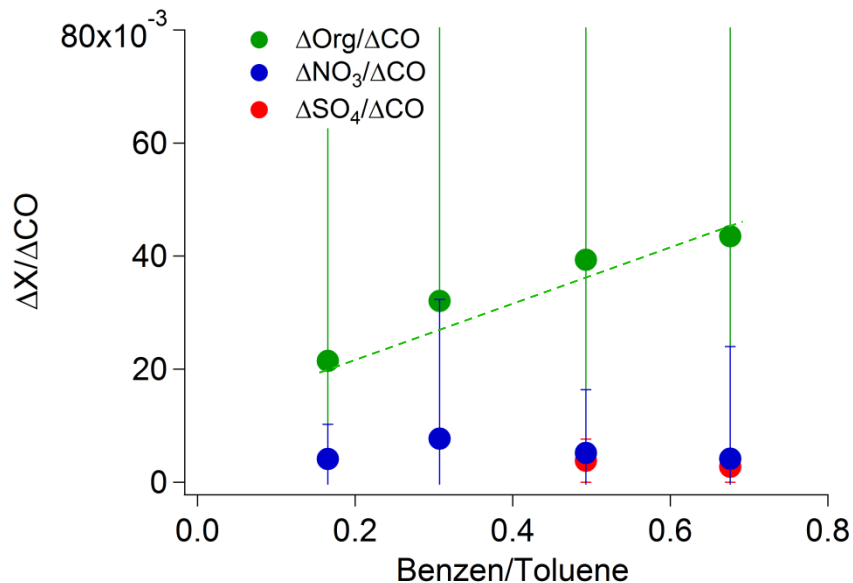
# Biogenic emissions (SAFMED+) 2 to 4 flights Forest dominated by isoprene emissions



# Biogenic emissions (SAFMED+) 2 to 4 flights Forest dominated by isoprene emissions

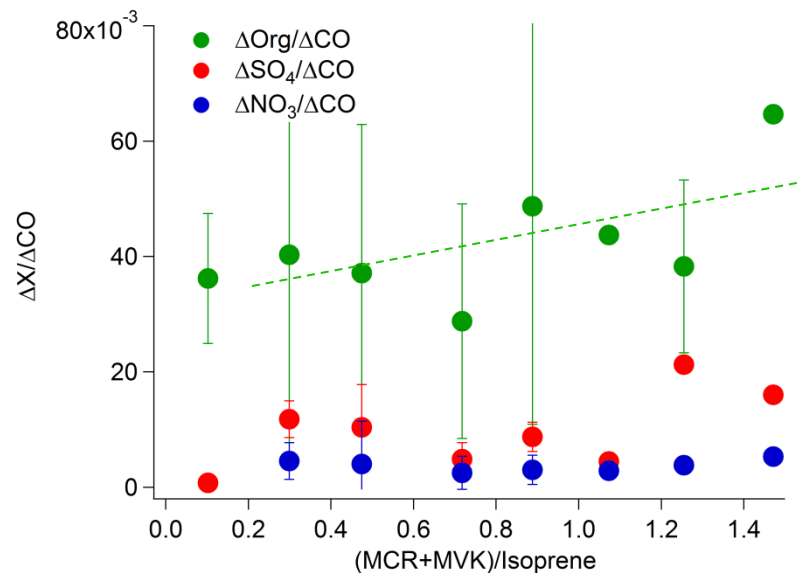


## Benzene/Toluene



MEGAPOLI, Paris 29 July 2009

## MCR+MVK/Isoprene

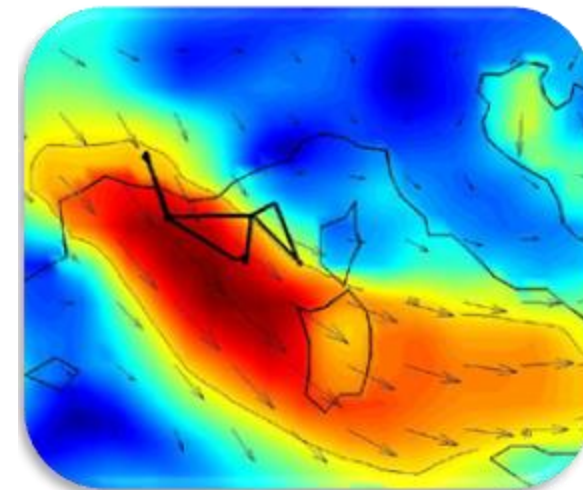
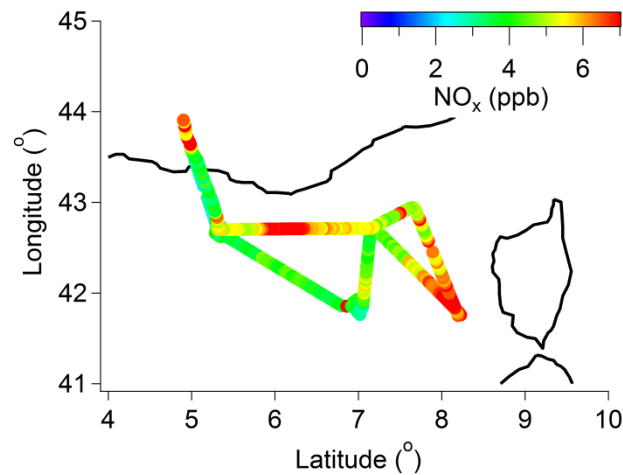
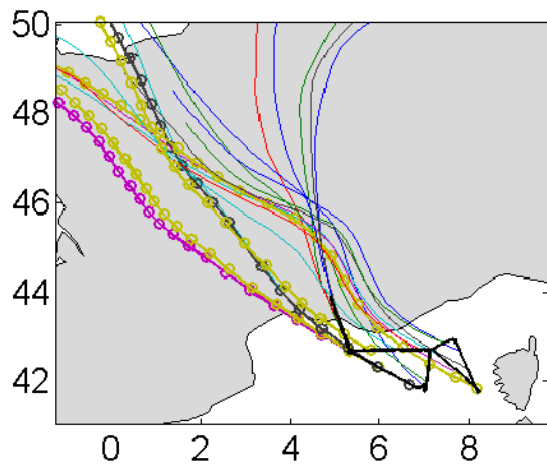
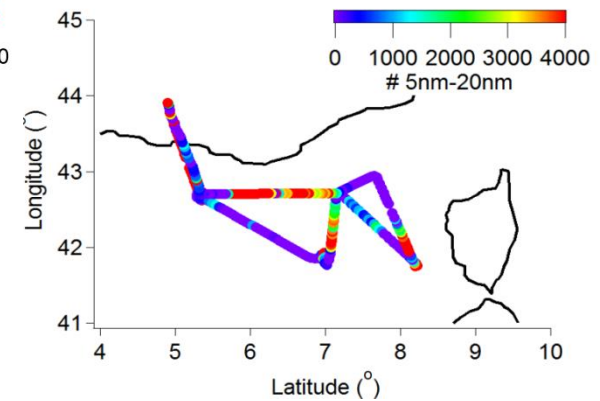
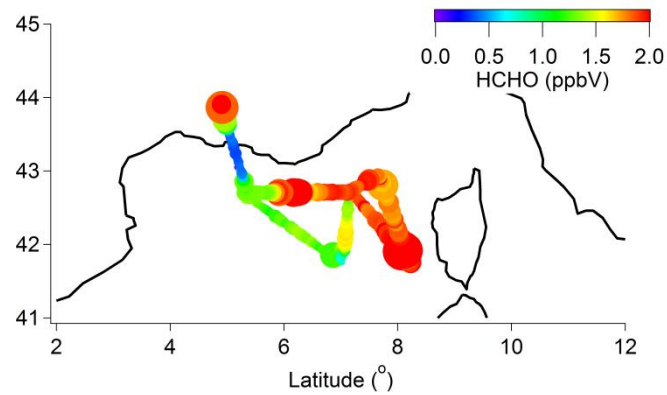
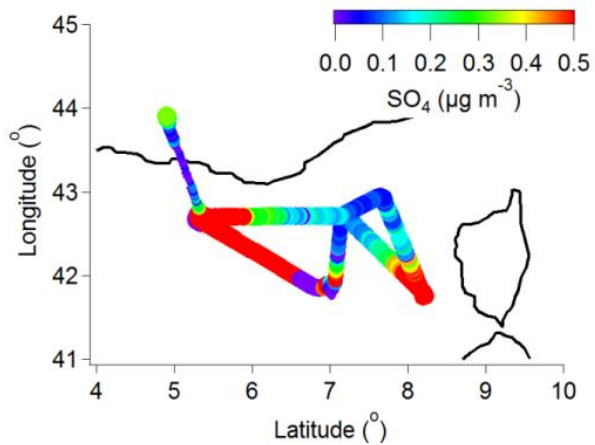


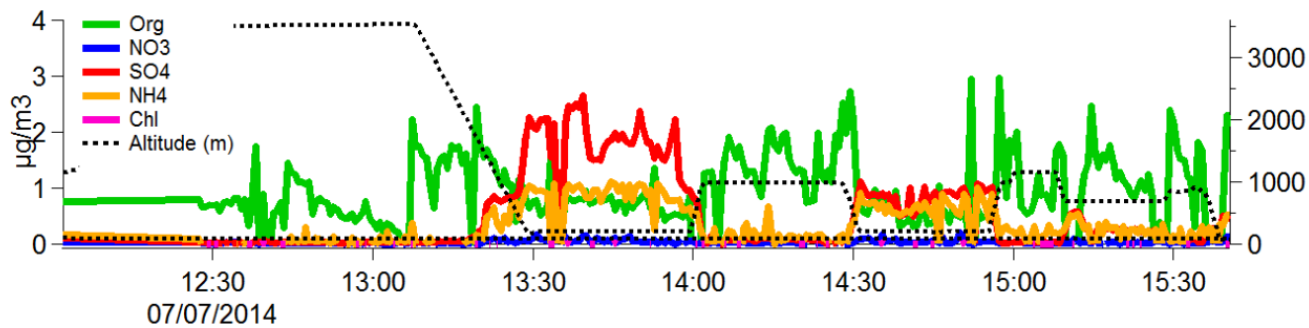
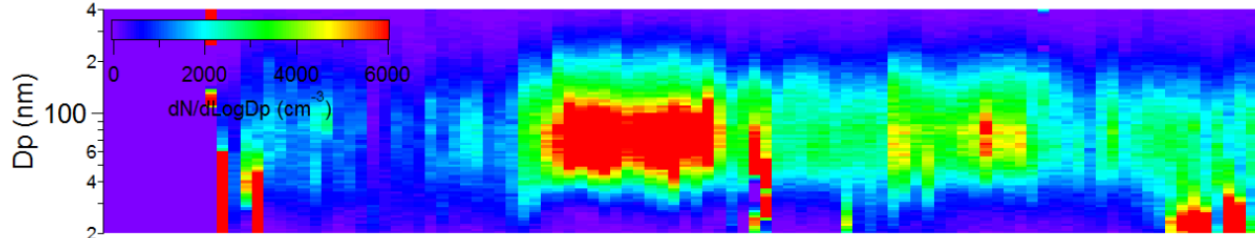
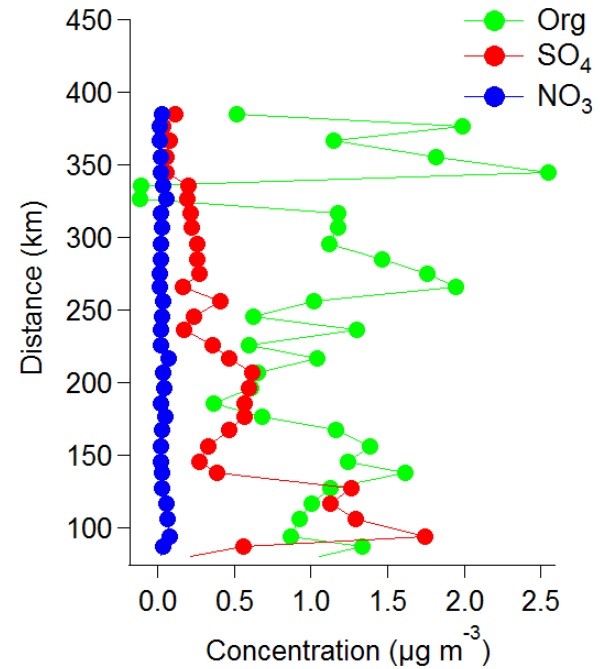
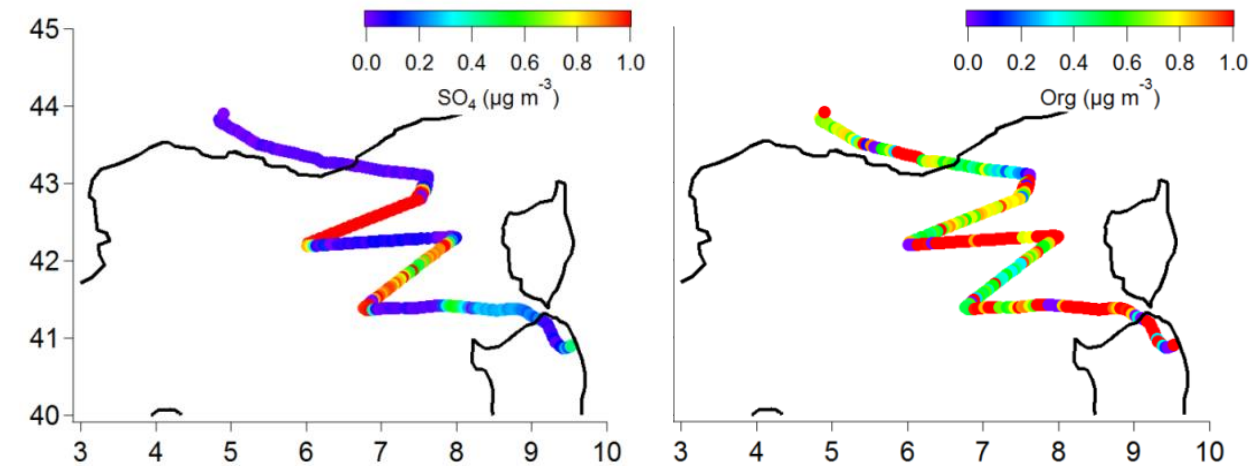
CHARMEX, Avignon 03 July 2014

### Prospectives:

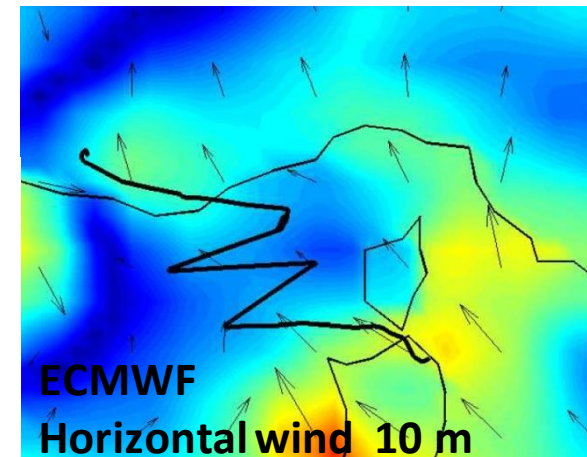
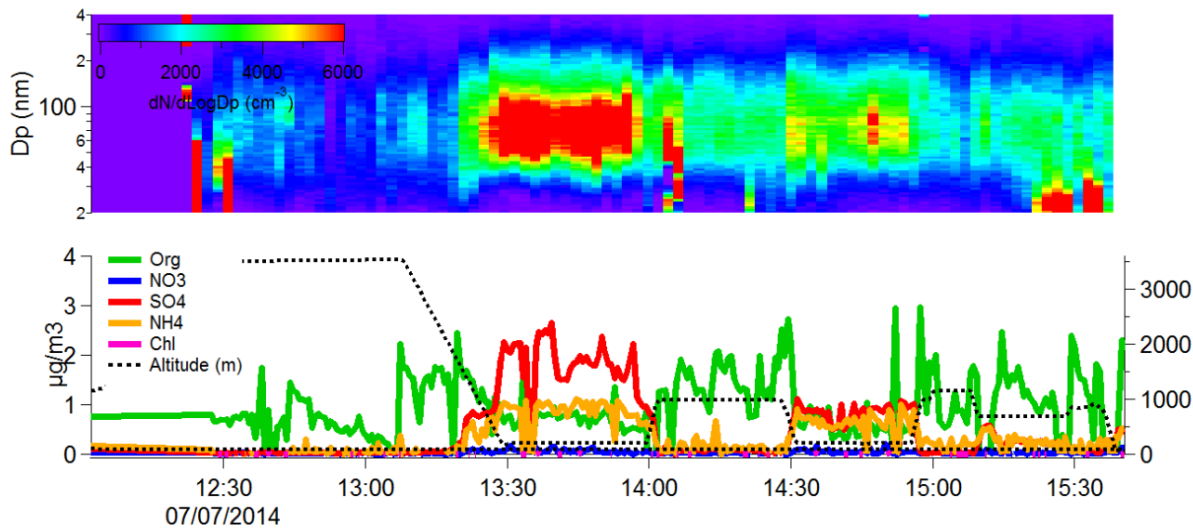
Source apportionment of organic aerosol  
Coupling AMS+PTRMS measurements







Date and Time



6C

