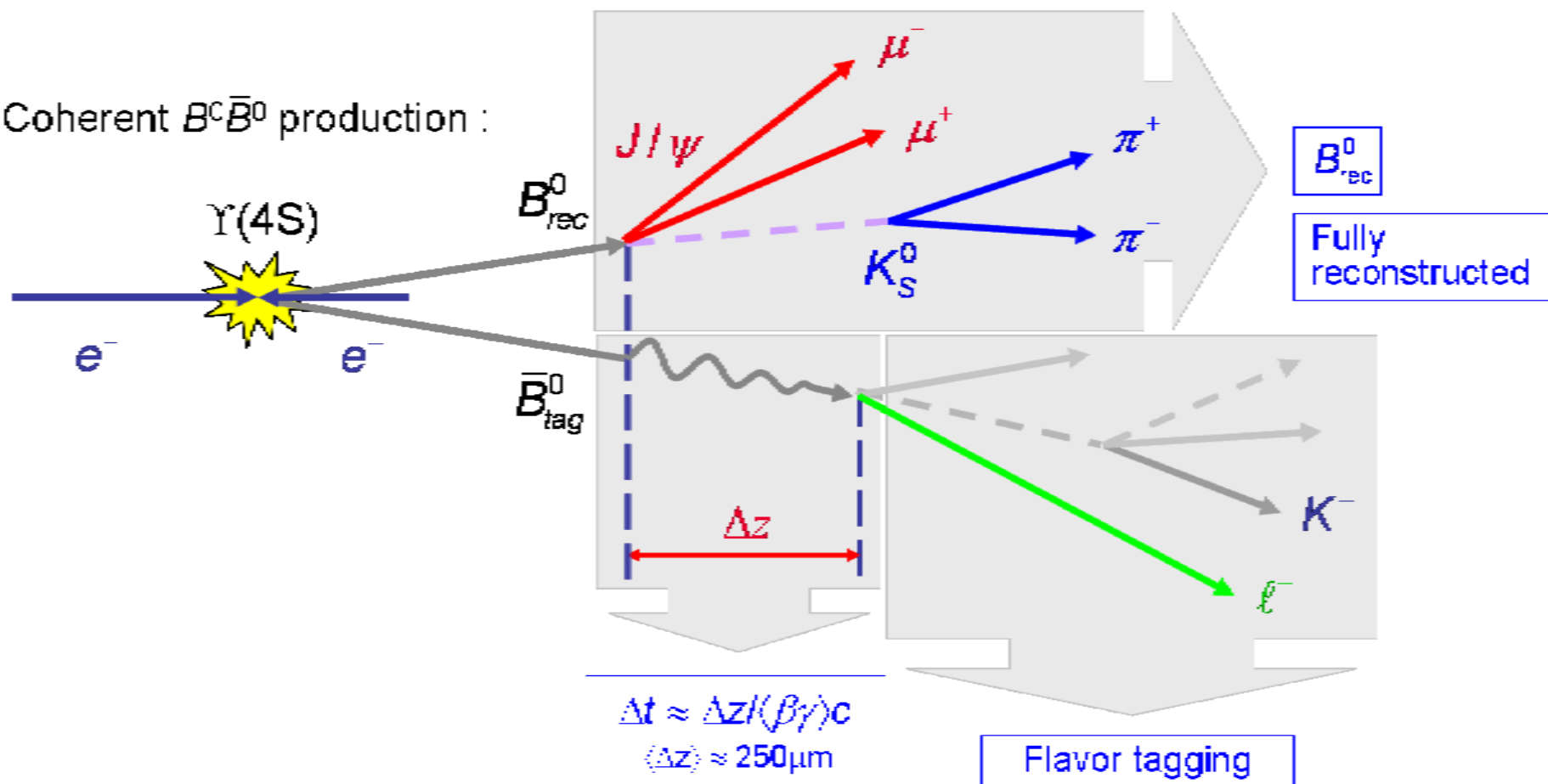
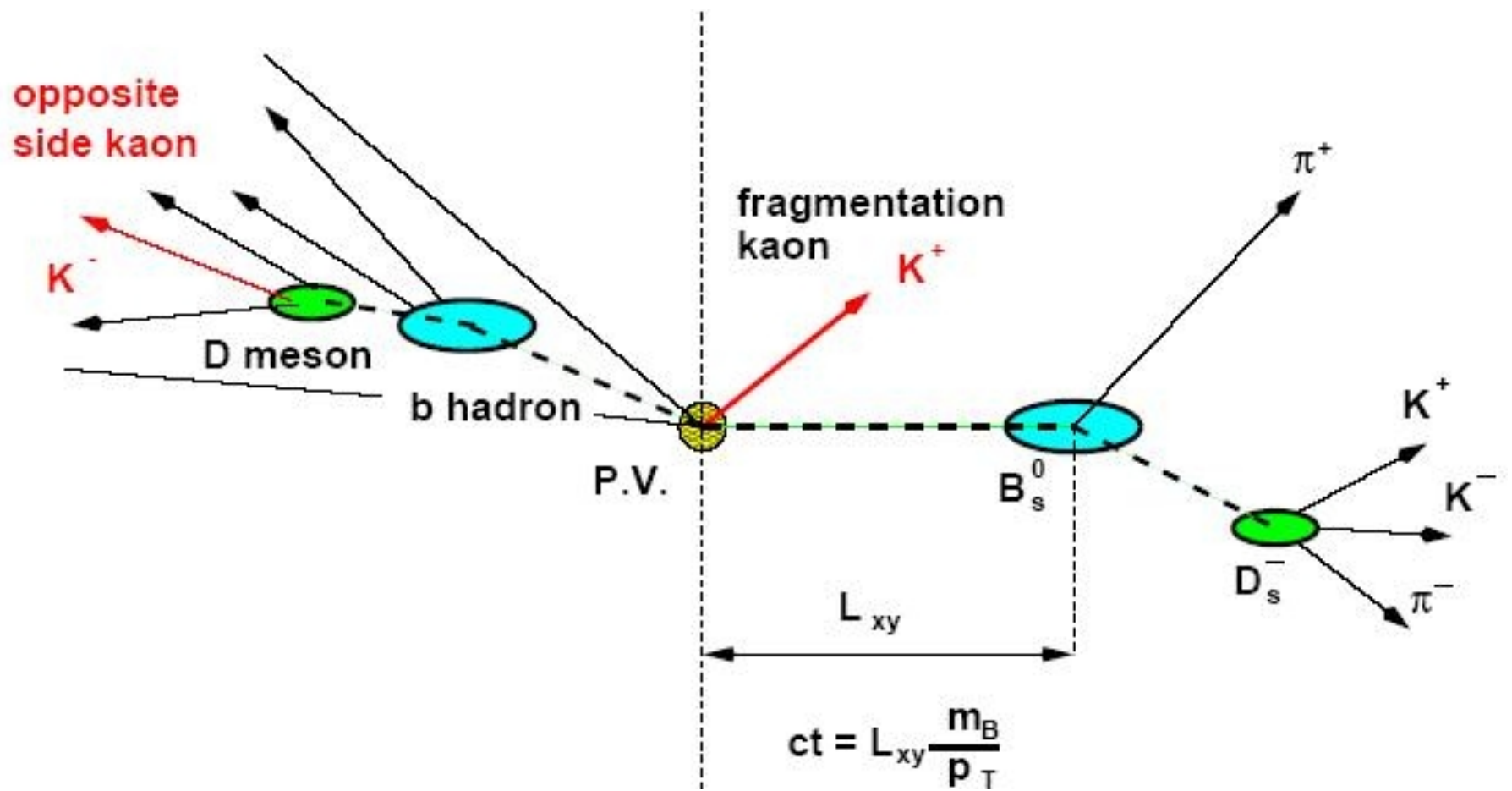
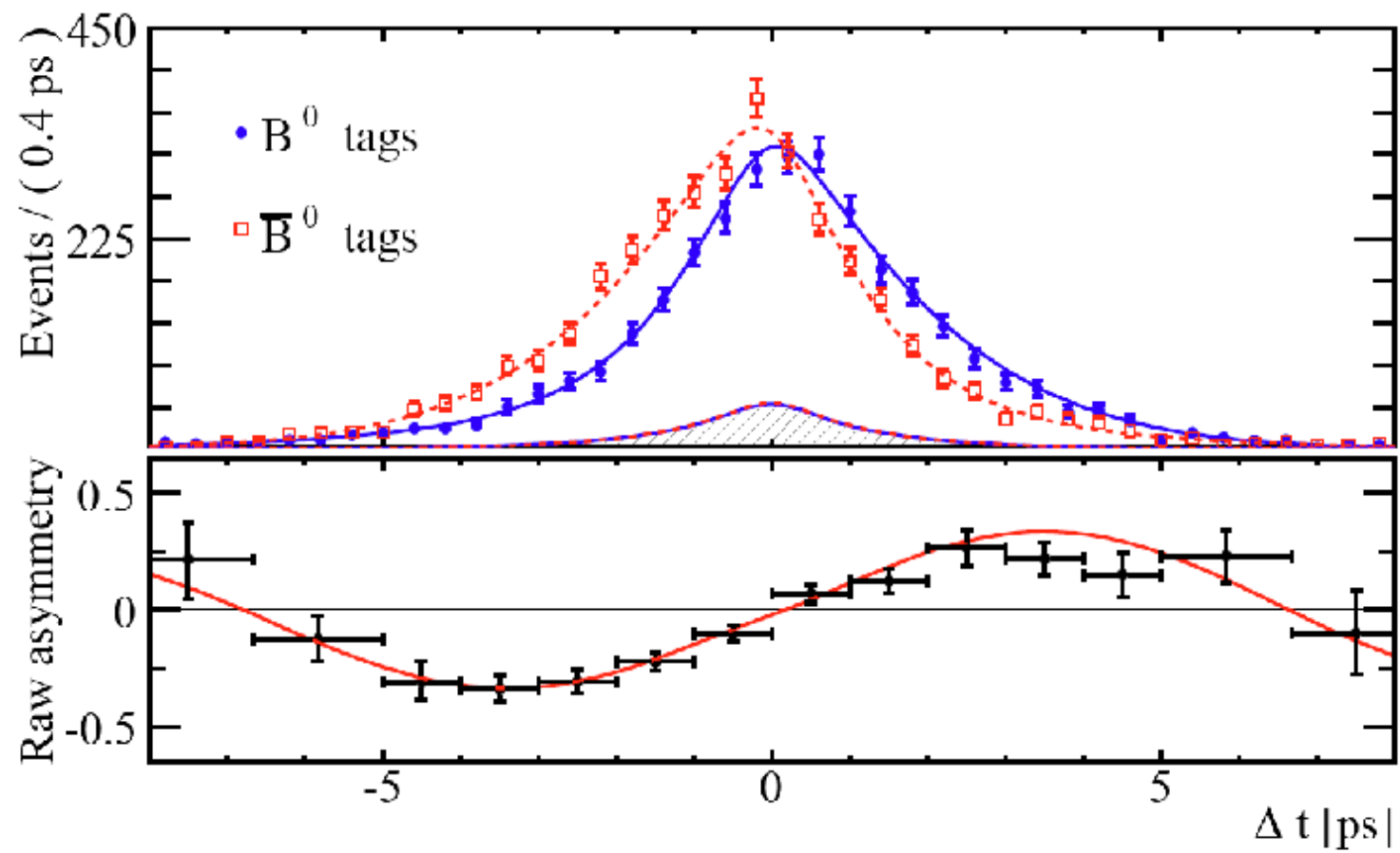


Coherent  $B^0\bar{B}^0$  production :



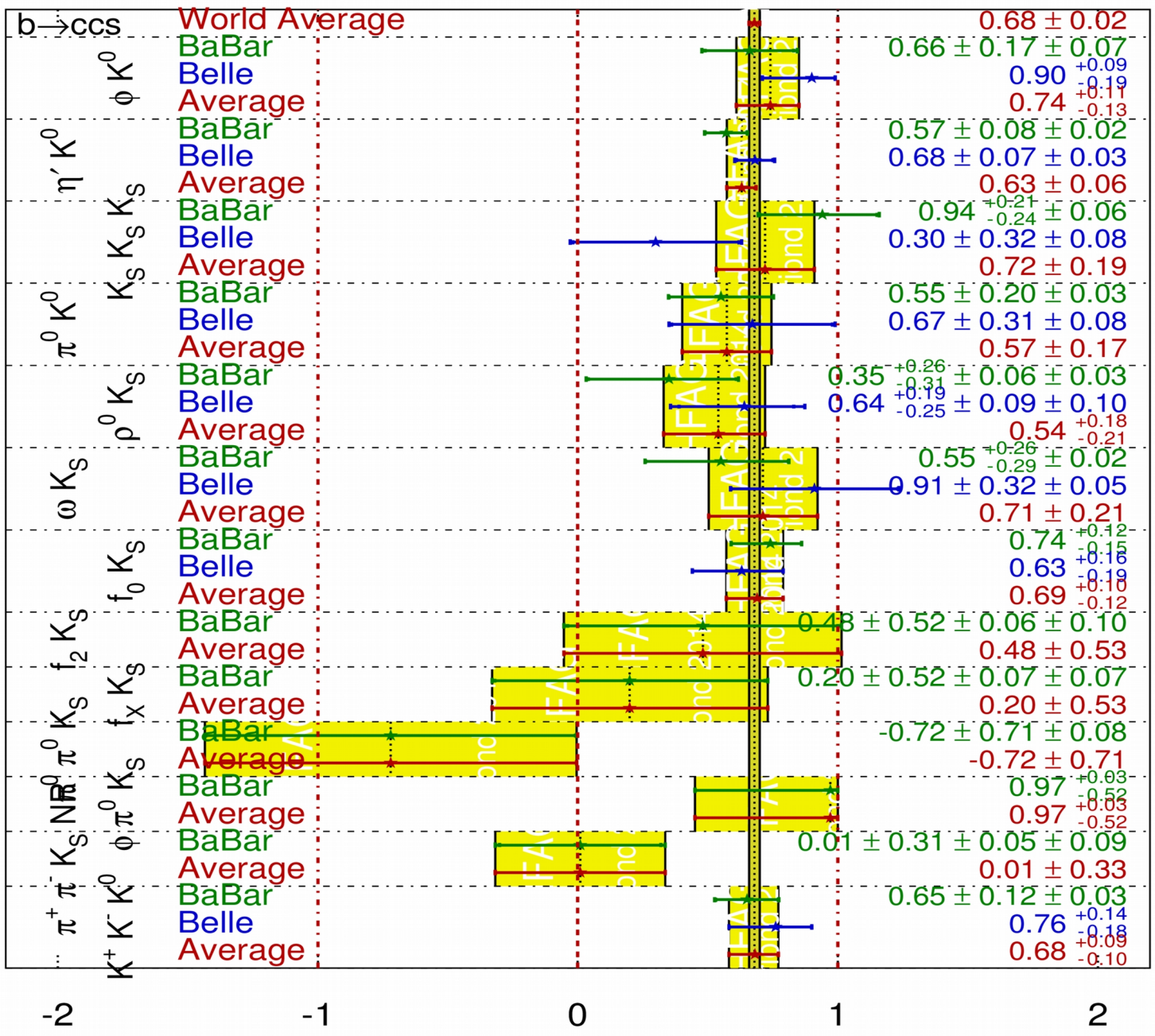






$$\sin(2\beta^{\text{eff}}) \equiv \sin(2\phi_1^{\text{eff}})$$

**HFAG**  
Moriond 2014  
PRELIMINARY





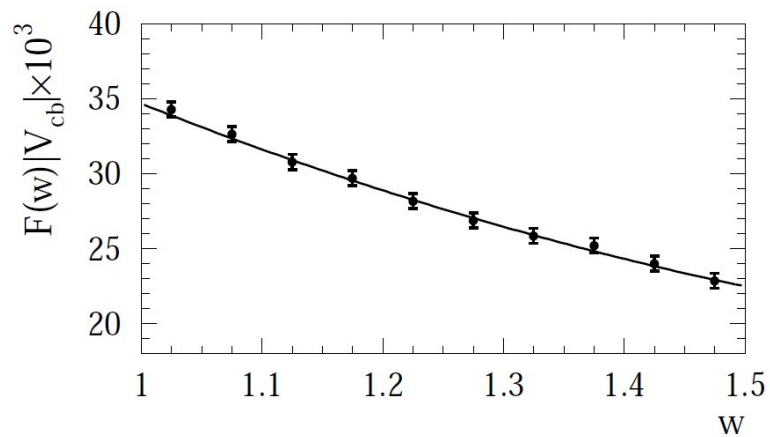
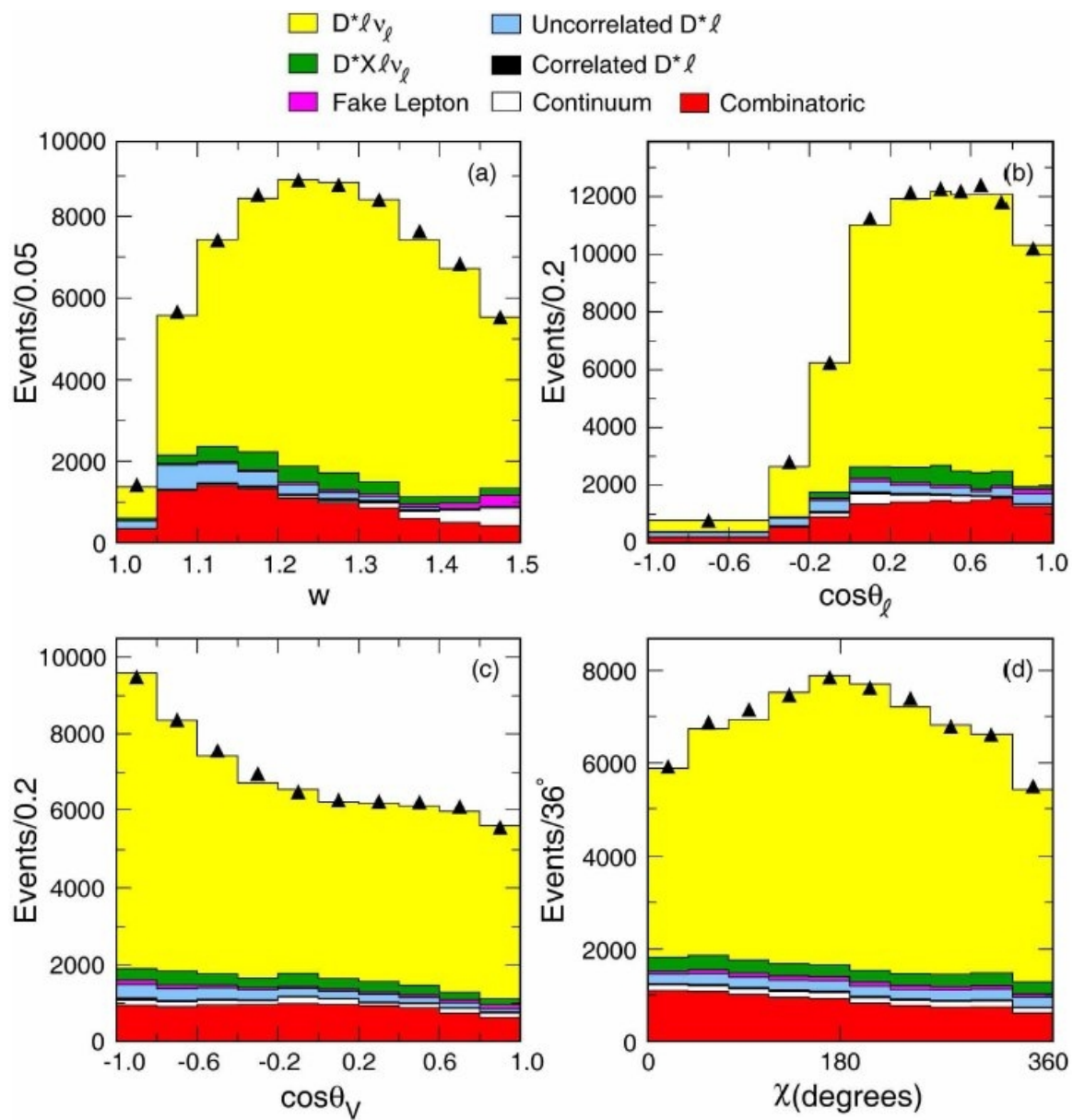
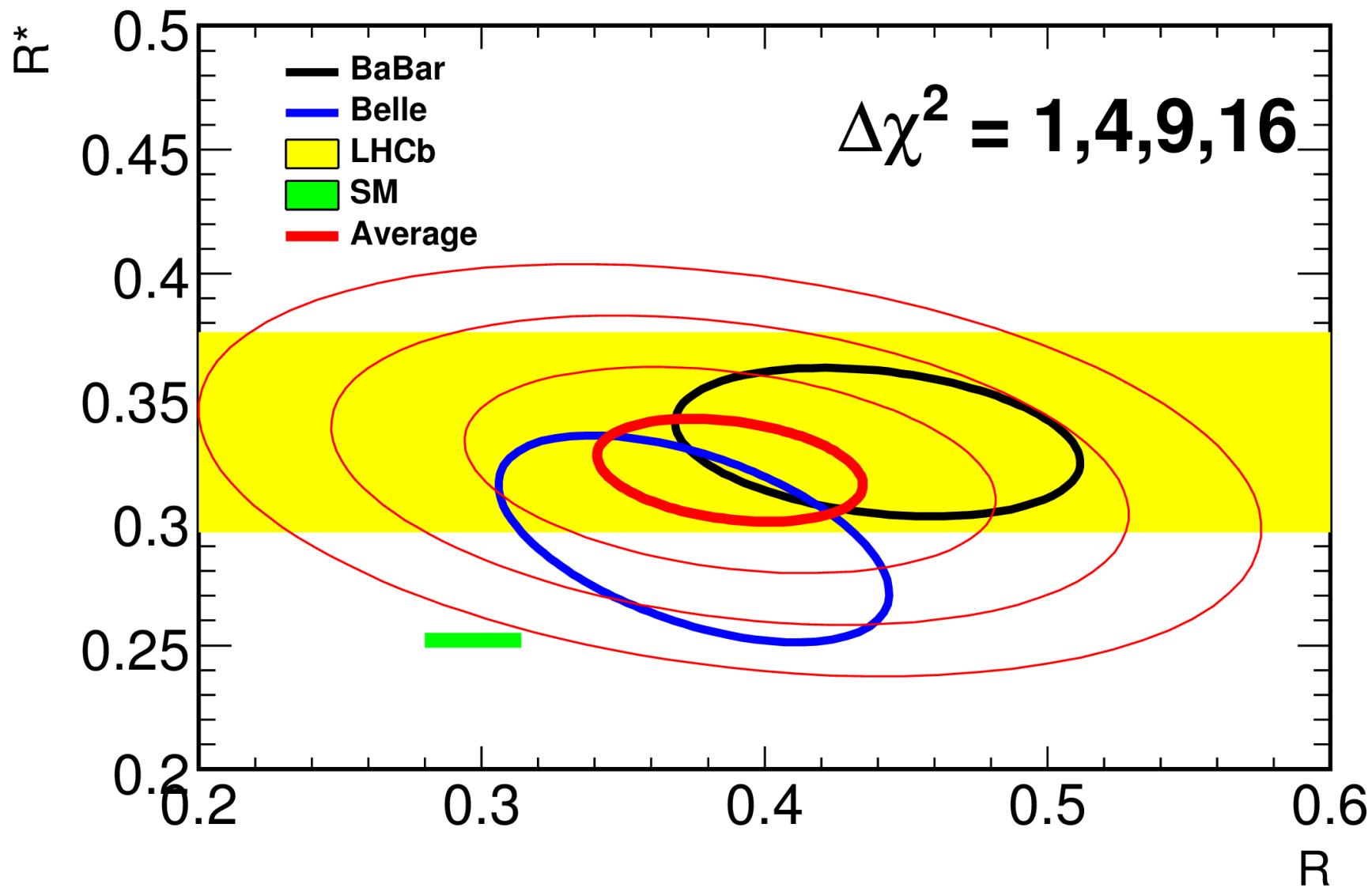


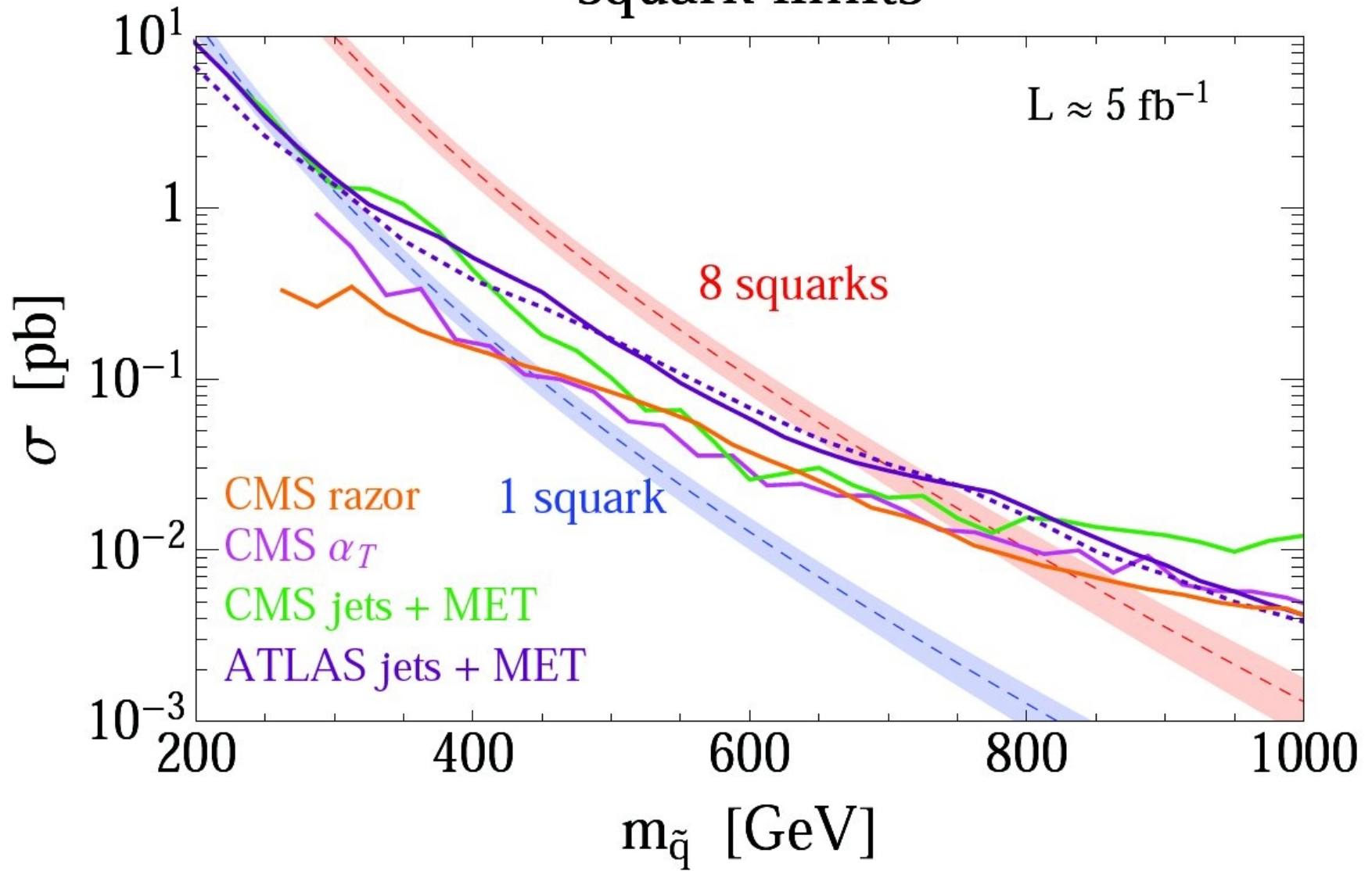
FIG. 6: The measured  $w$  dependence of  $\mathcal{F}(w)|V_{cb}|$  (data points) compared to the theoretical function with the fitted parameters (solid line). The experimental uncertainties are too small to be visible.

[BaBar, 0705.4008]





# squark limits



[1212.3328]